

DEPARTMENT OF THE ARMY TECHNICAL MANUAL

---

OPERATOR, ORGANIZATIONAL  
DS, GS, AND DEPOT MAINTENANCE MANUAL  
INCLUDING  
REPAIR PARTS AND SPECIAL TOOL LISTS

COMPRESSOR RECIPROCATING,  
AIR, RECEIVER MTD ELECTRIC  
MOTOR DRIVEN 25CFM, 175 PSI  
(CHAMPION PNEUMATIC  
CO, MODEL HR7-8M-1)  
FSN 4310-063-7371

---

This reprint includes all changes in the at the  
time of publication; changes 2 and 3.

HEADQUARTERS, DEPARTMENT OF THE ARMY  
OCTOBER 1968

## **SAFETY PRECAUTIONS**

### **BEFORE OPERATIONS**

Do not attempt fabrication of any air line.

Remove all tools, parts, and other items from the compressor.

Check all fittings, gages and connections for proper installation. Improperly installed items may become missiles when extreme pressure is applied.

### **DURING OPERATION**

Never direct the stream of compressed air at personnel. High pressure air may cause serious bodily injury.

Never attempt to service any of the air compressor components until the unit has been relieved of all air pressure.

### **AFTER OPERATION**

Never attempt to service any of the air compressor components until the unit has been relieved of all air pressure.

HEADQUARTERS  
DEPARTMENT OF THE ARMY  
WASHINGTON, D.C., 22 August 1974

CHANGE }  
NO. 3 }

**Operator, Organizational, Direct and General Support  
and Depot Maintenance Manual (Including  
Repair Parts and Special Tools List)**

**COMPRESSOR, RECIPROCATING, AIR; RECEIVER MOUNTED;  
ELECTRIC MOTOR DRIVEN; 25 CFM, 175 PSI (CHAMPION  
PNEUMATIC CO. MODEL HR7.8M-1) FSN 4310-063;7371**

TM 5-4310-334-15, 17 October 1968, is changed as follows:

*Reverse of Cover.* Add to Safety Precautions:

**WARNING**

**This compressor is NOT SUITABLE for the supply of air for charging cylinders with BREATHABLE AIR.**

**WARNING**

**Cleaning solvent, PD-680, is POTENTIALLY DANGEROUS CHEMICAL. Do not use near open flame.**

*Page 1, paragraph 1-1 is added.*

**1-1. Recommendation for Maintenance Publications Improvements.** You can help to improve this manual by calling attention to errors and by recommending improvements. Your letter or DA Form 2028 (Recommended Changes to Publications and Blank Forms) should be mailed direct to: Commander, U. S. Army Troop Support Command, ATTN: AMSTS-MPP, 4300 Goodfellow Boulevard, St. Louis, MO 63120. A reply will be furnished direct to you.

*Page 3, paragraph 7, add:*

**WARNING**

**This compressor is NOT SUITABLE for the supply of air for charging cylinders with BREATHABLE AIR.**

*Page 4, paragraph 22, add:*

**WARNING**

**Cleaning solvent, PD-680, used for cleaning is POTENTIALLY DANGEROUS CHEMICAL. Do not use near open flame. Flash point of solvent is 100-138°F. (38-59°C.).**

*Page C-20.* Reference change 2, line 0086D, change FSN 4310-584-9005 to 5330-584-9005.

*Page C-29.* Line item 00218, change FSN 4310-584-9005 to 5330-584-9005.

By Order of the Secretary of the Army:

Official:  
VERNE L. BOWERS  
*Major General, United States Army*  
*The Adjutant General*

CREIGHTON W. ABRAMS  
*General, United States Army*  
*Chief of Staff*

Distribution:

To be distributed in accordance with DA Form 12-25A (qty rqr block No. 21) operator's maintenance requirements for Air Compressors, 25 CFM.

Change

HEADQUARTERS  
DEPARTMENT OF THE ARMY  
Washington, DC, 17 September 1973

No. 2

**Operator, Organizational, Direct Support, General  
Support, and Depot Maintenance Manual  
Including Repair Parts and Special  
Tools List  
COMPRESSOR, RECIPROCATING, AIR RECEIVER MTD  
ELECTRIC MOTOR DRIVEN, 25 CFM 175 PSI  
(CHAMPION PNEUMATIC CO. MODEL HR7-8-M-1)  
FSN 4310-063-7371**

*Current as of 11 May 1973*

TM 5-4310-334-15, 17 October 1968, is changed as follows:

*Page 1, paragraph 1, line 2, "capable of delivering 25 cubic feet per minute" is changed to read "designed to deliver 25 CFM at 175 PSI." Paragraph 1, line 10. "The switch can be adjusted for cut-out pressure over the range of 140 to 175 psi" is changed to read "The switch is adjusted for the normal operating range of 140 PSI cut-in (Start) and 175 PSI cut-out (Stop) with a differential of 35 PSI, which is the value between the cut-in and cut-out pressure, and is the correct working range of the subject compressor."*

*Paragraph 1, line 12 "for a 35 psi to 65 psi differential between cut-in and cut-out pressure" is changed to read "from 35 psi through 65 psi, if cut in is decreased in proportion to the increase in the differential, in order not to exceed the cut-out pressure of 175 psi (para 34c, page 5)."*

*Page 2, paragraph 3, line 8, "abnormal" is changed to read "an uneven"*

*Page 3, subparagraph 6b, "glove" is changed to read "globe".*

Subparagraph 7b(2) is superseded as follows:

(2) Close globe valve assembly by rotating fully clockwise.

Subparagraph 7b (3) is superseded as follows:

(3) Disconnect air hose assembly, open globe valve and allow compressed air to bleed off.

Table 2, item 3 of the weekly interval is superseded as follows:

3. Check V belts for tightness. Belts should be tight enough to prevent slipping. If necessary, adjust belt tension to allow approximately 3/8 inch depression midway between pulleys (para 32.1).

*Page 4.* The note following paragraph 12 is superseded as follows:

**NOTE**

**The equipment should be disassembled only as necessary for inspection and parts replacement or other repair.**

After the last word in paragraph 13, add "(1, fig. 8)."

Paragraph 14, "bolts (1, figure 8)" is changed to read "capscrew (8, fig. 7)."

Paragraph 19, "(see figure 9)" is changed to read "(See 38, 39, 40, fig. 9)". "Do not remove a bearing" is changed to read "Do not remove a main bearing."

Paragraph 24, the last unnumbered subparagraph is superseded as follows:

**CAUTION**

**Before servicing the check valve (12, fig. 7) be sure pressure is 0 psi. If disc at bottom of plunger is not clean and free of scratches, lap in on fine sandpaper, turn over to other side, or replace the part.**

*Page 5.* Paragraph 32.1 is added after paragraph 32.

**\*This change supersedes C 1, 18 August 1970.**

**32.1 V-Belt Adjustment**

Belts should be tight enough to prevent slipping. The correct belt tension is when there is approximately 3/8 inch depression in belts midway between pulleys. *Page 6.* In table 4, the following changes are made in the REMEDY column.

Paragraph 3, immediately following "assembly", add "Clean contacts (para 24) or replace pressure switch (para 15)."

Paragraph 6, line 2, immediately after "tube", add "(24, fig. C-6)."

Paragraph 7, immediately after "replacement", add "(para 17, 24, and 28 of page 4)."

Paragraph 8, line 2, immediately after "tube", add "(24, fig. C-6)."

Paragraph -10, "(paragraph 14)" is changed to read "(para 32.1)".

Paragraph 14, immediately after "replacement," add "(para 14, 24, and 28 of page 4)".

Paragraph 15, line 3, immediately after "valve", add "(fig. C-11)".

Paragraph 18, line 3, immediately after "valve", add "(fig. C-11)."

*Page 7.* In table 4, the following change is made in the REMEDY column.

Paragraph 8, "(paragraph 14)" is changed to read "(para 32.1)".

*Page A-1.* Appendix A is superseded as follows:

**APPENDIX A  
BASIC ISSUE ITEM LIST AND ITEMS  
TROOP INSTALLED OR AUTHORIZED**

**Section I. INTRODUCTION**

**A-1. Scope**

This appendix lists basic issue items, items troop installed or authorized which accompany the compressor and are required by the crew/operator for operation, installation, or operator's maintenance.

**A-2. General**

This basic issue items, items troop installed or authorized list is divided into the following sections:

*a. Basic Issue Items List-Section II.* Not applicable.

*b. Items Troop Installed or Authorized List Section III.* A list in alphabetical sequence of items which at the discretion of the unit commander may accompany the end item, but are NOT subject to be turned in with the end item.

**A-3. Explanation of Columns**

The following provides an explanation of columns in the tabular list of Basic Issue Items List, Section II, and Items Troop Installed or authorized, Section III.

*a. Source, Maintenance, and Recoverability Code(s) (SMR):* Not applicable.

*b. Federal Stock Number.* This column indicates the Federal stock number assigned to the item and will be used for requisitioning purposes.

*c. Description.* This column indicates the Federal item name and any additional description of the item required.

*d. Unit of Measure (UIM).* A 2-character alphabetic abbreviation indicating the amount or quantity of the item upon which the allowances are based e.g., ft, ea, pr, etc.

*e. Quantity Authorized (Items Troop Installed or Authorized Only).* This column indicates the quantity of the item authorized to be used with the equipment.

**SECTION III. ITEMS TROOP INSTALLED OR AUTHORIZED**

(1) SMR code	(2) Federal stock number	(3) Description Ref. No. & Mfr code	(4) Unit of meas.	(5) Qty Auth
	4210-555-8837	EXTINGUISHER, FIRE	EA	1

Page B-2. In Section II, Group 4006, the maintenance functions for "Switch, Pressure, Automatic" are changed as follows:

TEST - F  
ADJUST-O  
REPLACE-F  
REPAIR-F

Page B-3. In Section II, Group 5005, add the following:  
Seat Valve . . . Inspect, F; Replace, F; and Repair, F.  
All changes, additions, or deletion of Federal stock number or manufacturer's part numbers within this change should be appropriately reflected in the index.

Page C-20. Immediately after line item 00086, add the following line item:

In column 1, add "PF" and "0086A."  
In column 2, add "5330-450-4128."  
In column 3, add "KIT, GASKET: compressor (11568) Z321".  
In column 4, add "EA".  
In column 6, add "1"  
In columns 7(a) and 7(b), add ""  
In column 7(c), add "2".  
In column 8(a) and 8(b), add "".  
In column 8(c), add "2".  
In column 9, add "6".  
In column 10, add "100".

Immediately after line item 00086A, add the following line item:

In column 1, add "PF" and "00086B".  
In column 2, add "5330-585-7546"  
In column 3, add "GASKET: cover plate (11568) NR31A"  
In column 4, add "EA"  
In column 6 add "2".  
In column 7, add "See Group 5001."

Immediately after line item 00086B, add the following line item:

In column 1, add "PF" and "00086C"  
In column 2, add "5330-450-4130"  
In column 3, add "GASKET: cylinder flange (11568) NR29A."  
In column 4, add "EA"  
In column 6, add "2"  
In column 7, add "See Group 5001"

Immediately after line item 00086C, add the following line item:

In column 1, add "PF" and "00086D".  
In column 2, add "4310-584-9005."

In column 3, add "GASKET: governor cover (11568) SE30-89."

In column 4, add "EA"

In column 6, add "1"

In column 7, add "See Group 5009"

Immediately after line item 00086D, add the following line item:

In column 1,-add "PF" and "00086E"

In column 2, add "5330-633-6113"

In column 3, add "GASKET, GOVERNOR HOUSING (11568) SE30-30A"

In column 4, add "EA"

In column 6, add "1"

In column 7, add "See Group 5009"

Line item 00096, make the following changes in the columns indicated:

In column 1, the SMR code is changed to read "PF".

In column 2, add "5330-585-7546"

In column 3, add "(Component of KIT, Stock No. 5330-450-4128: see Group 5000)"

In column 7(a), add ""

In columns 7(b) and 7(c), add "2"

In column 8(a), add ""

In columns 8(b) and 8(c), add "2".

In column 9, add "12"

In column 10, add "200"

Page C-21. In line item 00099, make the following changes in the columns indicated.

In column 1, the SMR code is changed to read "PF"

In column 2, add "5330-450-4130"

In column 3, add "(Component of KIT, Stock No. 5330-450-4128: see Group 5000)"

In column 7(a), add ""

In columns 7(b) and 7(c), add "2"

In column 8(a), add ""

In columns 8(b) and 8(c), add "2"

In column 9, add "12"

In column 10, add "200"

Page C-23. Immediately after line item 00130, add the following line item.

In column 1, add "PF" and "00130A"

In column 2, add "5330-450-4129"

In column 3, add "KIT, GASKET: intake and exhaust valves (11568) Z103G."

In column 4, add "EA"

In column 6, add "1"

In columns 7(a) and 7(b), add ""

In column 7(c), add "2"

In columns 8(a) and 8(b), add ""

In column 9, add "6"  
In column 9, add "6"  
In column 10, add "100"

Line item 00132, make the following changes in the columns indicated:

In column 1, the SMR code is changed to read "PF"  
In column 3, add "(component of kit, stock No. 5330-450-4129)".  
In columns 7(a) and 7(b), add ""  
In column 7(c), add "2"  
In columns 8(a) and 8(b), add ""  
In column 8(c), add "2"  
In column 9, add "10"  
In column 10, add "200"

Line item 00133, make the following changes in the columns indicated:

In column 1, the SMR code is changed to read "PF"  
In column 3, add "(Component of KIT, Stock No. 5330-450-4129)"  
In columns 7(a) and 7(b), add ""  
In column 7(c), add "2"  
In columns 8(a) and 8(b), add ""  
In column 8(c), add "2"  
In column 9, add "10"  
In column 10, add "200"

*Page C-24.* In line item 00141, make the following changes in the columns indicated:

In column 1, the SMR code is changed to read "PF"  
In column 3, add "(Component of KIT, Stock No. 5330-450-4129)"  
In columns 7(a) and 7(b), add ""  
In column 7(c), add "2"  
In columns 8(a) and 8(b), add ""  
In column 8(c), add "2"  
In column 9, add "10"  
In column 10, add "200"

Line item 00142, make the following changes in the columns indicated:

In column 1, the SMR code is changed to read "PF"  
In column 3, add "(Component of KIT, Stock No. 5330-450-4129)"  
In columns 7(a) and 7(b), add ""  
In column 7(c), add "2"  
In columns 8(a) and 8(b), add ""  
In column 8(c), add "2"  
In column 9, add "10"  
In column 10, add "200"

Line item 00151, make the following changes in the columns indicated:

In column 1, the SMR code is changed to read "PF"  
In column 3, add "(Component of KIT, Stock No. 5330-450-4129)"  
In columns 7(a) and 7(b), add ""  
In column 7(c), add "2"  
In columns 8(a) and 8(b), add ""  
In column 8(c), add "2"  
In column 9, add "10"  
In column 10, add "200"

Line item 00152, make the following changes in the columns indicated:

In column 1, the SMR code is changed to read "PF"  
In column 3, add "(Component of KIT, Stock No. 5330-450-4129)"  
In columns 7(a) and 7(b), add ""  
In column 7(c), add "2"  
In columns 8(a) and 8(b), add ""  
In column 8(c), add "2"  
In column 9, add "10"  
In column 10, add "200"

*Page C-25.* In line item 00159, make the following changes in the columns indicated:

In column 1, the SMR code is changed to read "PF"  
In column 3, add "(Component of KIT, Stock No. 5330-450-4129)"  
In columns 7(a) and 7(b), add ""  
In column 7(c), add "2"  
In columns 8(a) and 8(b), add ""  
In column 8(c), add "2"  
In column 9, add "10"  
In column 10, add "200"

*Page C-29.* In line item 00218, make the following change in the column indicated:

In column 3, add "(Component of KIT, Stock No. 5330-450-4128)"

Line item 00219, make the following changes in the columns indicated:

In column 2, the FSN is changed to read "4310-773-8010"  
In column 3, the P/N is changed to read "Z30-

30"

Line item 00220, make the following changes in the columns indicated:

In column 2, the FSN is changed to read "5330-633-6113"  
In column 3, the P/N is changed to read "SE30-30A"

Line item 00221, make the following changes in the columns indicated:

In column 2, add "5330-889-5392"



In column 3, the P/N is changed to read "SE30-30A005".

*Page C-30.* line 00222, make the following changes in the columns indicated:

In column 2, add "5330-889-5391"

In column 3, the P/N is changed to read "SE30-30A010"

Line item 00223, make the following changes in the columns indicated:

In column 2, add "5330-889-5390"

In column 3, the P/N is changed to read "SE30-30A015".

By Order of the Secretary of the Army:

*CREIGHTON W. ABRAMS*  
*General, United States Army*  
*Chief of Staff*

Official:

VERNE L. BOWERS  
*Major General, United States Army*  
*The Adjutant General*

Distribution:

To be distributed in accordance with DA Form 12-25A. (qty rqr block No. 21) Operator maintenance requirements for Air Compressor, 25 CFM.

Technical Manual )  
 )  
No. 5-4310-334-15 )

**TM 5-4310-334-15**  
HEADQUARTERS  
DEPARTMENT OF THE ARMY  
Washington, D.C., 17 OCTOBER 1968

**OPERATOR, ORGANIZATIONAL, DS, GS, AND DEPOT MAINTENANCE MANUAL  
INCLUDING REPAIR PARTS AND SPECIAL TOOLS LIST**

**COMPRESSOR, RECIPROCATING, AIR, RECEIVER MTD., ELECTRIC  
MOTOR DRIVEN 25CFM, 175 PSI, (CHAMPION PNEUMATIC  
CO, MODEL HR7-8M-1) FSN 4310-063-7371**

Current a of 19 April 1968

**CONTENTS**

PARAGRAPH NO.		PAGE NO.
1.	GENERAL DESCRIPTION .....	1
2.	INSTALLATION .....	2
3.	LOCATION AND MOUNTING .....	2
4.	HEAT COIL SELECTION .....	2
5.	ELECTRICAL CONNECTIONS .....	2
6.	PREPARATION FOR USE .....	3
7.	OPERATION .....	3
8.	PREVENTIVE MAINTENANCE .....	3
9.	LUBRICATION .....	4
10.	REPAIR AND REPLACEMENT .....	4
11.	SPECIAL TOOLS .....	4
12.	DISSASSEMBLY .....	4
13.	BELT GUARD ASSEMBLY .....	4
14.	V BELTS .....	4
15.	PRESSURE SWITCH ASSEMBLY .....	4
16.	MAGNETIC MOTOR STARTER .....	4
17.	VALVE ASSEMBLIES .....	4
18.	CAMSHAFT .....	4
19.	MAIN BEARING ASSEMBLIES .....	4
20.	PROTON CONNECTING RODS .....	4
21.	OIL SEAL .....	4
22.	CLEANING .....	4
23.	INSPECTION .....	4
24.	REPAIR .....	4
25.	REASSEMBLY .....	4
27.	MAGNETIC MOTOR STARTER .....	4
28.	VALVE ASSEMBLIES .....	4
29.	CRANKCASE HAND HOLE PLATE .....	5
30.	CRANKSHAFT MAIN BEARING ASSEMBLIES .....	5
31.	PISTON CONNECTING RODS .....	5
32.	PISTON RINGS .....	5
33.	TEST PROCEDURE .....	5
34.	ADJUSTMENT .....	5
35.	TROUBLESHOOTING .....	5
	APPENDIX A BASIC ISSUE ITEMS LIST .....	A-1
	APPENDIX B MAINTENANCE ALLOCATION CHART .....	B-1
	APPENDIX C REPAIR PARTS AND SPECIAL TOOLS LIST .....	C-1

## 1. GENERAL DESCRIPTION

The HR7-8M-1 (figure 1) is a four cylinder, reciprocating type air compressor capable of delivering 25 cubic feet per minute. The compressor assembly and associated electric motor are mounted on a frame which is welded to the air receiver, an 80 gallon steel tank. The electric motor drives the compressor assembly by means of a matched pair of V belts associated electric motor are mounted on a frame which is welded to the air receiver, an 80 gallon steel tank. The electric motor drives the compressor assembly by means of a matched pair of V belts.

The pressure switch assembly determines cut-in and cut-out pressure for the compressor assembly. The switch can be adjusted for cut-out pressures over the range of 140 to 175 psi. The switch can also be adjusted for a 35 psi to 65 psi differential between cut-in and cut-out pressure. The safety valve assembly releases when air receiver pressure exceeds 200 psi.

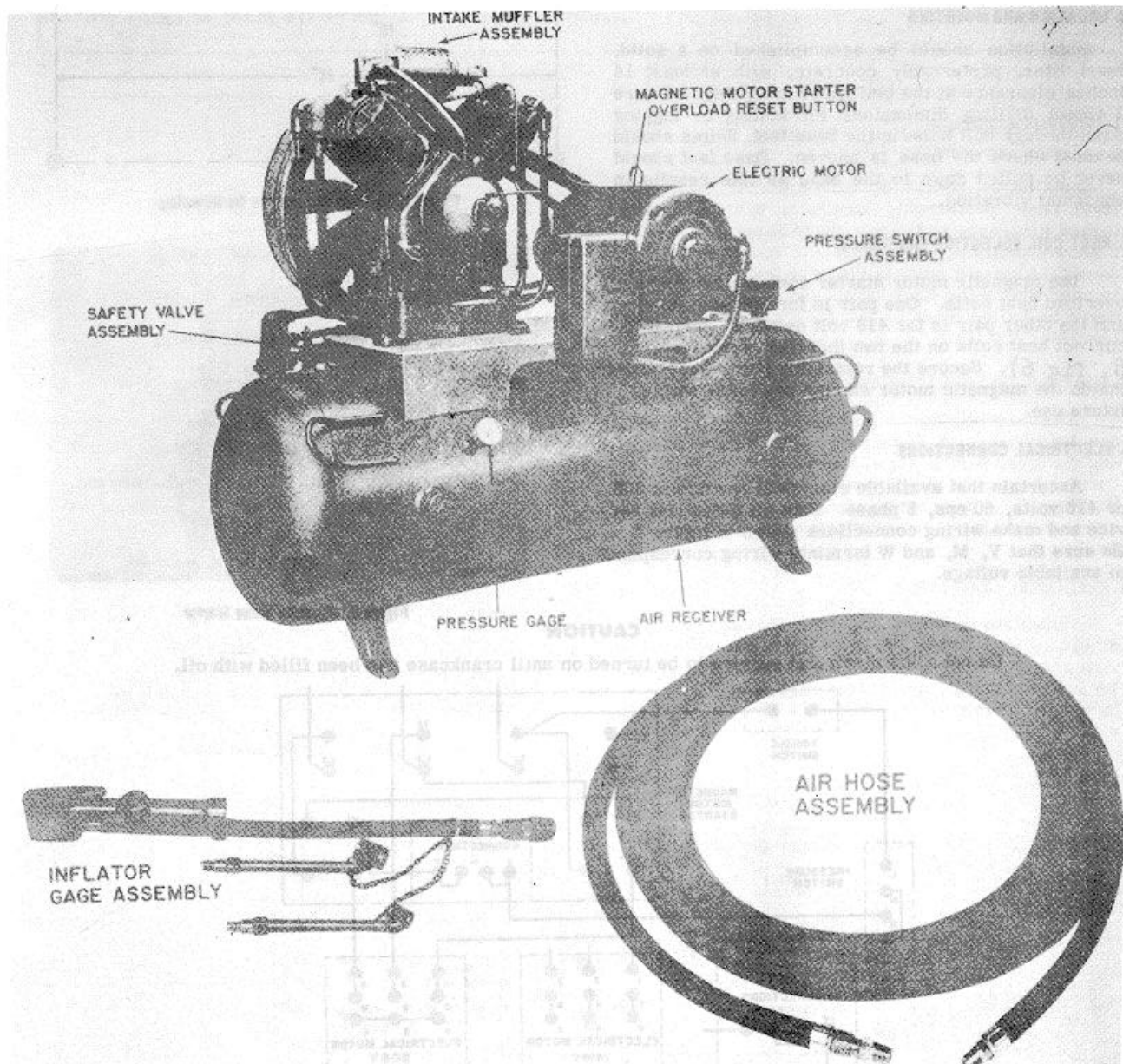


Figure 1. HR7-8M-1 Air Compressor

**Table 1. Tabulated Data**

Bore and Stroke .....	4-4/8 (2) and 2-1/2 (2) x 3
CU, FT/REV .....	0.05828
Air Receiver Working Pressure .....	200-psi at -25° to +450° F
Displacement .....	33.7 CFM
Delivery .....	26.3 CFM
Crankcase Capacity .....	4 qts
Shipping Weight.....	760 lbs
Overall Dimensions .....	50" x 22" x 66"
Power Requirements .....	208 or 416 volts, 60 cps, 3 phase

**2. INSTALLATION**

**3. LOCATION AND MOUNTING**

Installation should be accomplished on a solid, level base, preferably concrete, with at least 14 inches clearance at the belt guard assembly. Figure 2 shows drilling dimensions for bolting or lagging down through bolt holes in the base feet. Shims should be used where the base is uneven. Base feet should never be pulled down to the base as this results in abnormal vibration.

**4. HEAT COIL SELECTION (See figure 3)**

The magnetic motor starter contains two pairs of overload heat coils. One pair is for 208 volt service and the other pair is for 416 volt service. Install the correct heat coils on the two thermal overloads (5, 8, fig 6). Secure the remaining pair of heat coils inside the magnetic motor starter box for possible future use.

**5. ELECTRICAL CONNECTIONS**

Ascertain that available electrical service is 208 or 416 volts, 60 cps, 3'phase.: Shut off electrical service and make wiring connections -shown in figure 4. Be sure that V, M, and W terminal wiring corresponds to available voltage.

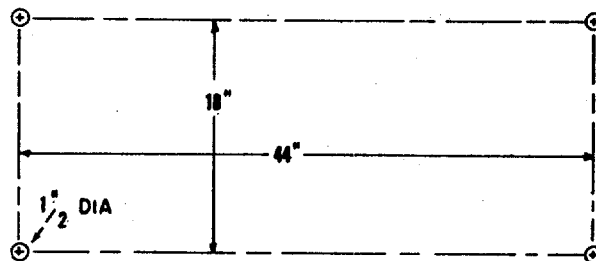


Figure 2. Drilling Dimensions for Mounting

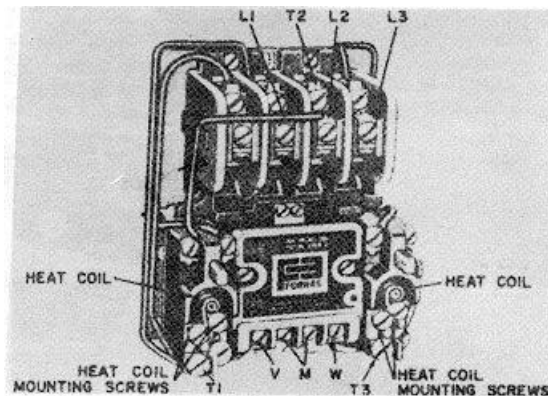


Figure 3. Magnetic Meter Starter

**CAUTION**

Do not allow electrical service to be turned on until crankcase has been filled with oil.

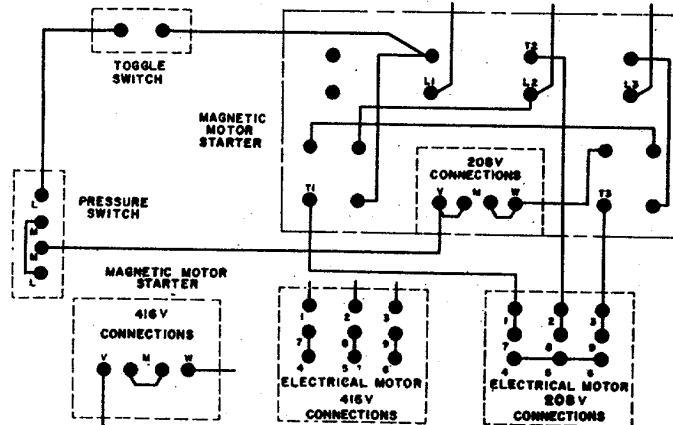


Figure 4. Electrical Wiring

**6. PREPARATION FOR USE**

If the air compressor will not be used immediately, omit steps d and e.

- a. Connect air hose (see fig.1) to globe valve (16, fig7) and connect inflator gage assem. (fig.1)to air hose.
- b. Close globe valve assembly by rotating fully clockwise.
- c. Add oil to crankcase according to lubrication instructions (paragraph 9).
- d. Turn on electrical service and place toggle switch (2, figure 6) on magnetic motor starter box to on (up) position.
- e. Allow equipment to operate until operating pressure is indicated on pressure gage (21 fig. 7), at which time the electric motor will stop. This normally takes up to 5 minutes.
- f. Place toggle switch on magnetic motor starter box to off (down) position.

**7. OPERATION**

- a. To start up air compressor, proceed as follows:

- 1. Place toggle switch (2, figure 6) on magnetic motor starter box on (up) position. Unless operating pressure is already indicated on pressure gage, equipment may operate for up to 5 minutes to build up pressure.
- 2. When operating pressure is reached, open globe valve assembly by rotating fully counterclockwise.
- b. To shut down air compressor for a prolonged period, proceed as follows:
  - 1. Place toggle switch on magnetic motor starter box to off (down) position.
  - 2. Disconnect air hose assembly and allow compressed air to bleed off.
  - 3. Close globe valve assembly by rotating fully clockwise.

**8. PREVENTIVE MAINTENANCE**

The following table contains the schedule of preventive maintenance under normal operating conditions. Under high salt, sand, or dust conditions, clean overall equipment and muffler assembly more frequently.

INTERVAL	MAINTENANCE REQUIRED
Daily	<ul style="list-style-type: none"> <li>1. Check oil level at visible oil level gage (29, fig. 9) If necessary, add oil (paragraph 9).</li> <li>2. Drain moisture from air receiver by opening drain cock (.20, fig.7).</li> <li>3. Turn off air compressor at end of day's operation and close globe valve assembly.</li> </ul>
Weekly	<ul style="list-style-type: none"> <li>1. Turn off air compressor. Clean dust and foreign matter from cylinder head, motor, fan blade, air lines, inter-cooler, and air receiver. Pay particular attention to baffles.</li> <li>2. Turn off air compressor. Remove muffler assembly and clean it with gasoline or any commercial solvent other than carbon tetrachloride.</li> <li>3. Check V belts for tightness. Belts should be tight enough to prevent slipping. If necessary, adjust belt tension to allow approximately 3/8 inch depression (paragraph 14).</li> </ul>
3 Months	<ul style="list-style-type: none"> <li>1. Change oil (paragraph 9).</li> <li>2. Use soap solution and brush to check entire equipment for air leakage around fittings, connections, and gaskets.</li> <li>3. Tighten all nuts and cap screws.</li> </ul>
12 Months	<ul style="list-style-type: none"> <li>1. Check and clean compressor valves (paragraphs 17 and 28). Replace springs, discs, and seats when worn or damaged.</li> </ul>

## 9. LUBRICATION

At installation and when changing oil, the crankcase should be filled with a good grade of unused, clean motor oil (See LO 5-4310-334-12).

Oil is drained by removing drain cap (31, fig. 9). Oil is added by removing fill plug (41) and filling opening to overflow.

The electric motor is equipped with sealed-for-life bearings and requires no further lubrication.

## 10. REPAIR AND REPLACEMENT

### 11. SPECIAL TOOLS

None.

### 12. DISASSEMBLY (figs. 7 thru 9).

The general disassembly procedure can be determined by referring to the exploded view illustrations (figs. 7 thru 9). Exceptions and peculiarities are described in paragraphs 13 through 21.

#### NOTE

**The equipment should be disassembled only to the point where required repair or replacement can be made.**

13. BELT GUARD ASSEMBLY. The top brackets of the belt guard assembly are secured with the capscrews for the manifolds.

14. V BELTS. To remove V belts, loosen bolts (i, figure 8) and slide electric motor to reduce V belt tension.

15. PRESSURE SWITCH ASSEMBLY. The pressure switch assembly should not be disassembled. Replace it as a unit.

16. MAGNETIC MOTOR STARTER. The magnetic motor starter should not be disassembled except to salvage heat coils (paragraph 4). Replace it as a unit.

17. VALVE ASSEMBLIES. (See figure 8.) When a valve assembly is removed, it should be tagged for identification of cylinder and whether it is an intake or exhaust valve. Valve assemblies should not be disassembled unless replacement of parts is necessary.

18. CRANKSHAFT. (See figure 9.) Convenience slots are provided in the crankcase for removal of the crankshaft.

19. MAIN BEARING ASSEMBLIES. (See figure 9). Do not remove a bearing assembly unless replacement of parts is necessary. Knock bearing assembly off with a soft hammer or other blunt instrument. Take care not to mar crankshaft. Never insert anything against inner race for removal.

### 20. PISTON CONNECTING RODS. (See figure 9.)

Piston connecting rods are manufactured in two matching parts. When removing, tag both parts to identify crankshaft location.

21. OIL SEAL. The oil seal (20, figure 9) can be knocked out with a blunt instrument through the hand hole. A badly deteriorated oil seal can be dug out with a screwdriver.

### 22. CLEANING

Clean the equipment with a washing solvent. Blow or wipe dry before reassembly.

### 23. INSPECTION

Inspect all packing, seals, gaskets, pistons, rods, and crankshaft. Look for wear, scoring, cracks, breaks, and distortion of parts.

### 24. REPAIR

Replace packing, seals, and gaskets. Replace broken, cracked and distorted parts. Replace both parts of a piston connecting rod if one part is defective. Replace worn and scored parts if pressure loss is evidenced in test procedure (paragraph 33).

The pressure switch assembly uses a diaphragm to open and close a set of contacts (figure 5). Clean contacts by using sandpaper lightly.

Valves may become fouled by carbon or other foreign-matter. Disassemble valve to clean. Seat and disc may be lapped in on fine sandpaper if badly carboned. If a smooth finish cannot be obtained, replace with new parts.

Before servicing the check valve, be sure pressure is 0 psi. If disc at bottom of plunger is not clean and free of scratches, lap in on fine sandpaper, turn over to other side, or replace the part.

### 25. REASSEMBLY

Reassembly is essentially the reverse of disassembly. Exceptions and peculiarities are described in paragraphs 26 through 32.

### 26. PRESSURE SWITCH ASSEMBLY. (See figure 5.)

When a new pressure switch assembly is installed, it should be adjusted according to paragraph 34.

### 27. MAGNETIC MOTOR STARTER. (See figure 6.)

When a new magnetic motor starter is installed, the correct heat coils should be installed according to paragraph 4.

### 28. VALVE ASSEMBLIES. (See figure 8.)

When any valve assembly is removed, always install a new valve gasket. Be sure to replace a valve assembly in its original position.

29. CRANKCASE HAND HOLE PLATE. When hand hole plate (25, fig. 9) is removed for any reason, always install a new hand hole gasket (26).

30. CRANKSHAFT MAIN BEARING ASSEMBLIES. (See figure 9.) The main bearing assemblies are pressed onto the crankshaft up against a shoulder. Be sure to press main bearing cone and roller and main bearing cup until positive stop is reached.

31. PISTON CONNECTING RODS. (See figure 9.) When installing a new piston connecting rod, be sure that both parts of the new rod are used. Both parts of the old rod must be discarded. Oil dippers (7) fit up against shoulders on the connecting rods. Press dippers on until a positive stop is reached.

32. PISTON RINGS. (See figure 9.) Piston rings are received in sets and upper and lower rings are identified in the sets.

### 33. TEST PROCEDURE

Table 3 indicates the minimum performance standards that the equipment must meet. To make the test, perform the following steps.

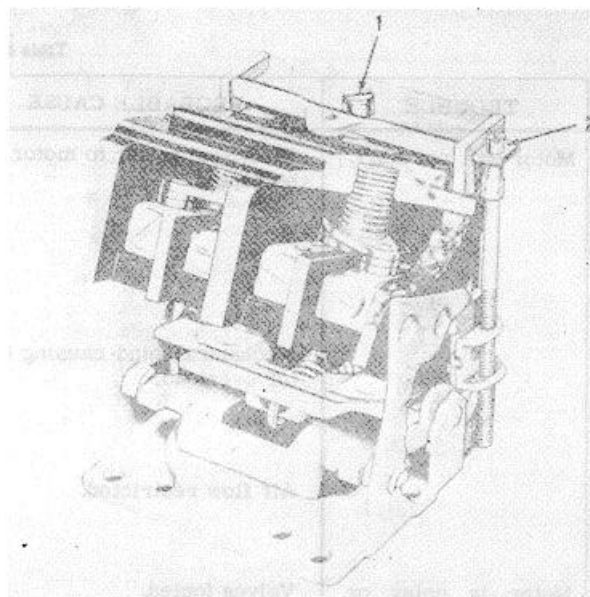
- a. Place toggle switch (2, figure 6) to off (down) position.
- b. Remove air hose assembly from globe valve assembly(16, fig. 7).
- c. Open globe valve assembly (ccw) until pressure gage (21) indicates 0 psi, then close valve assembly.
- d. Reconnect air hose assembly and open globe valve assembly.
- e. Place toggle switch to on (up) position and check pumping time according to table 3. If cut-out pressure is incorrect, adjust according to paragraph 34.
- f. Operate inflator gage assembly to lower air pressure until compressor starts. If cut-in pressure is incorrect adjust according to paragraph 34.

**Table 3. Minimum Pumping Time Requirements**

PRESSURE	PUMPING TIME
0 to 100 psi	2 minutes, 42 seconds
0 to 125 psi	3 minutes, 30 seconds
0 to 150 psi	4 minutes, 24 seconds
0 to 175 psi	5 minutes, 6 seconds

### 34. ADJUSTMENT

- a. To raise cut-in and cut-out pressure, turn screw (1, figure 5) on pressure switch assembly clockwise.



1. PRESSURE ADJUSTMENT SCREW
2. DIFFERENTIAL ADJUSTMENT SCREW

**Figure 5. Pressure Switch Assembly Adjustments**

#### CAUTION

**Do not turn screw (2) further than it will turn easily.**

- b. To lower differential (difference between cut-in and cut-out pressure), turn screw (2) counterclockwise.
- c. To increase differential and maintain same cut-out pressure, simultaneously turn screw (2) clockwise and turn screw (1) counterclockwise.

#### NOTE

**If differential is increased by turning only screw (2) clockwise, the cut-in pressure changes only slightly and the cut-out pressure rises.**

### 35. TROUBLESHOOTING

Table 4 lists troubles that may occur during installation, operation and test. One or more remedial steps are indicated for each of the troubles.

**Table 4. Troubleshooting**

TROUBLE	PROBABLE CAUSE	REMEDY
Motor will not start.	<p>Electrical power to motor Interrupted.</p> <p>Mechanical bind causing motor overload.</p> <p>Air flow restricted.</p>	<p>Check that wall switch (if used) is on and that associated fuses are not blown.</p> <p>Check that heat coils on magnetic motor starter are not broken. (See figure 3.)</p> <p>Check contacts and diaphragm in pressure switch assembly.</p> <p>Check that electrical motor and flywheel operate freely.</p> <p>Depress reset push-button on magnetic motor starter box. (See figure 1.)</p> <p>Badly worn compressors which are pumping oil may deposit carbon within aftercooler tube and the check valve. Clean or replace parts as necessary.</p>
Motor is noisy or overheats.	<p>Valves fouled.</p> <p>Air flow restricted.</p>	<p>Repair valve parts by cleaning or replacement.</p> <p>Badly worn compressors which are pumping oil may deposit carbon within aftercooler tube and the check valve. Clean or replace parts as necessary.</p>
Compressor runs hot.	<p>Dirt or dust accumulation on baffles, which acts as an insulation.</p> <p>V belts slipping.</p> <p>Intake muffler clogged.</p> <p>Oil level low.</p> <p>Wrong flywheel rotation.</p> <p>Valves fouled.</p> <p>Air flow restricted.</p>	<p>Clean baffles on cylinder and tubing by blowing with air or use a wire brush.</p> <p>Tighten V belts to provide correct tension (paragraph 14).</p> <p>Clean intake muffler.</p> <p>Add oil if necessary (paragraph 9).</p> <p>If flywheel rotates against direction shown by arrows, reverse rotation of motor by correcting motor wiring (figure 4).</p> <p>Repair valve parts by cleaning or replacement.</p> <p>Badly worn Compressors which are pumping oil may deposit carbon within aftercooler tube and the check valve. Clean or replace parts as necessary.</p>
Compressor pumps too slowly.	<p>Leakage in system.</p> <p>Valves fouled.</p> <p>Air flow restricted.</p>	<p>Use a soap solution to check for leaks at all connections and any other suspected points. Any leakage will be evidenced by bubbles.</p> <p>Repair valve parts by cleaning or replacement.</p> <p>Badly worn compressors which are pumping oil may deposit carbon within aftercooler tube and the check valve. Clean or replace parts as necessary.</p>
Compressor will not shut off.	<p>Pressure switch assembly defective.</p>	<p>Check contacts and diaphragm in pressure switch assembly.</p>
Compressor runs too often.	<p>Leakage in system.</p>	<p>Use a soap solution to check for leaks at all connections and any other suspected points. Any leakage will be evidenced by bubbles.</p>



**Table 4. Troubleshooting (continued)**

TROUBLE	PROBABLE CAUSE	REMEDY
<p>Compressor runs too often (continued).</p> <p>Magnetic motor starter kicks out.</p> <p>Noisy check valve. Excessive V belt wear.</p>	<p>Pressure switch needs adjustment.</p> <p>Large accumulation of water in air receiver.</p> <p>Leakage in check valve.</p> <p>Electrical service voltage is too low.</p> <p>Momentary voltage surge.</p> <p>Mechanical bind causing motor overload.</p> <p>Check valve is worn.</p> <p>V belts slipping. (graph 14).</p> <p>Motor pulley and flywheel misaligned.</p>	<p>Check according to paragraph 33.</p> <p>Drain water from air receiver by opening drain cock (20, figure 7)</p> <p>Clean, repair, or replace check valve parts.</p> <p>Test, or have power company test, for low voltage.</p> <p>After several minutes, depress reset push-button on magnetic motor starter box.</p> <p>Check that electrical motor and flywheel operate freely.</p> <p>Repair or replace check valve parts.</p> <p>Tighten V belts to provide correct tension (paragraph 14).</p> <p>Move motor pulley in or out by loosening set screw on key and tapping pulley in appropriate direction.</p>

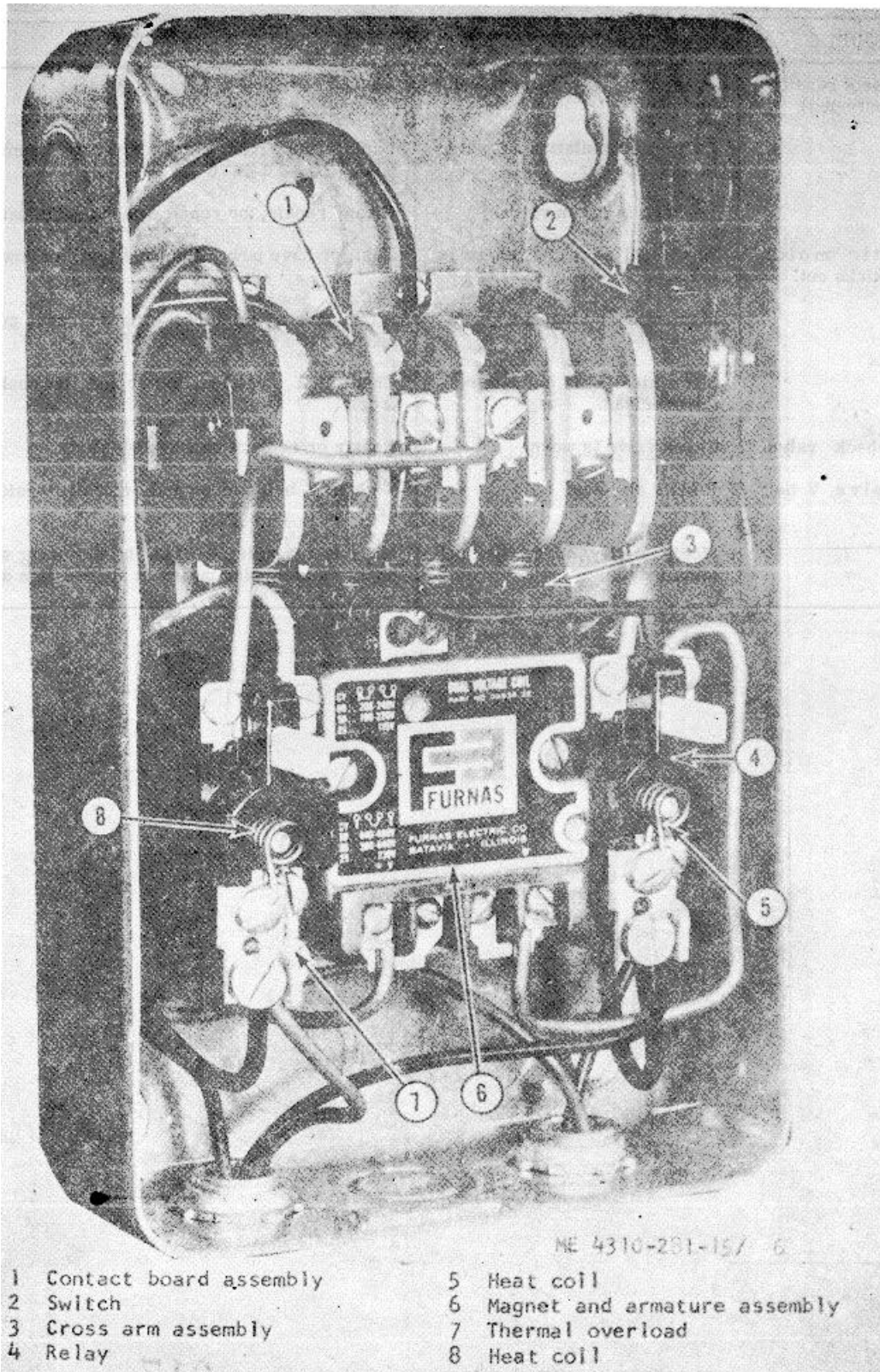
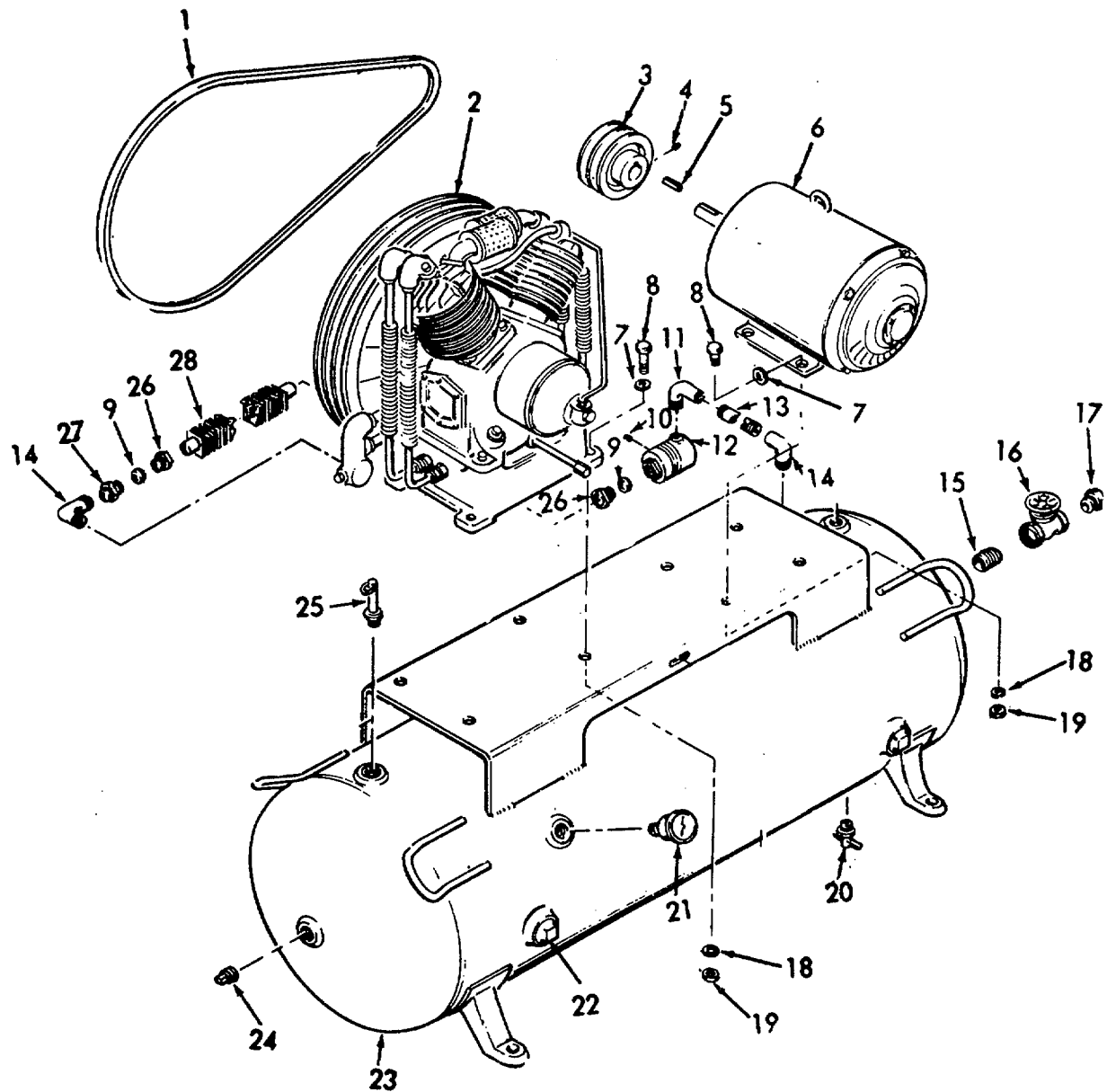


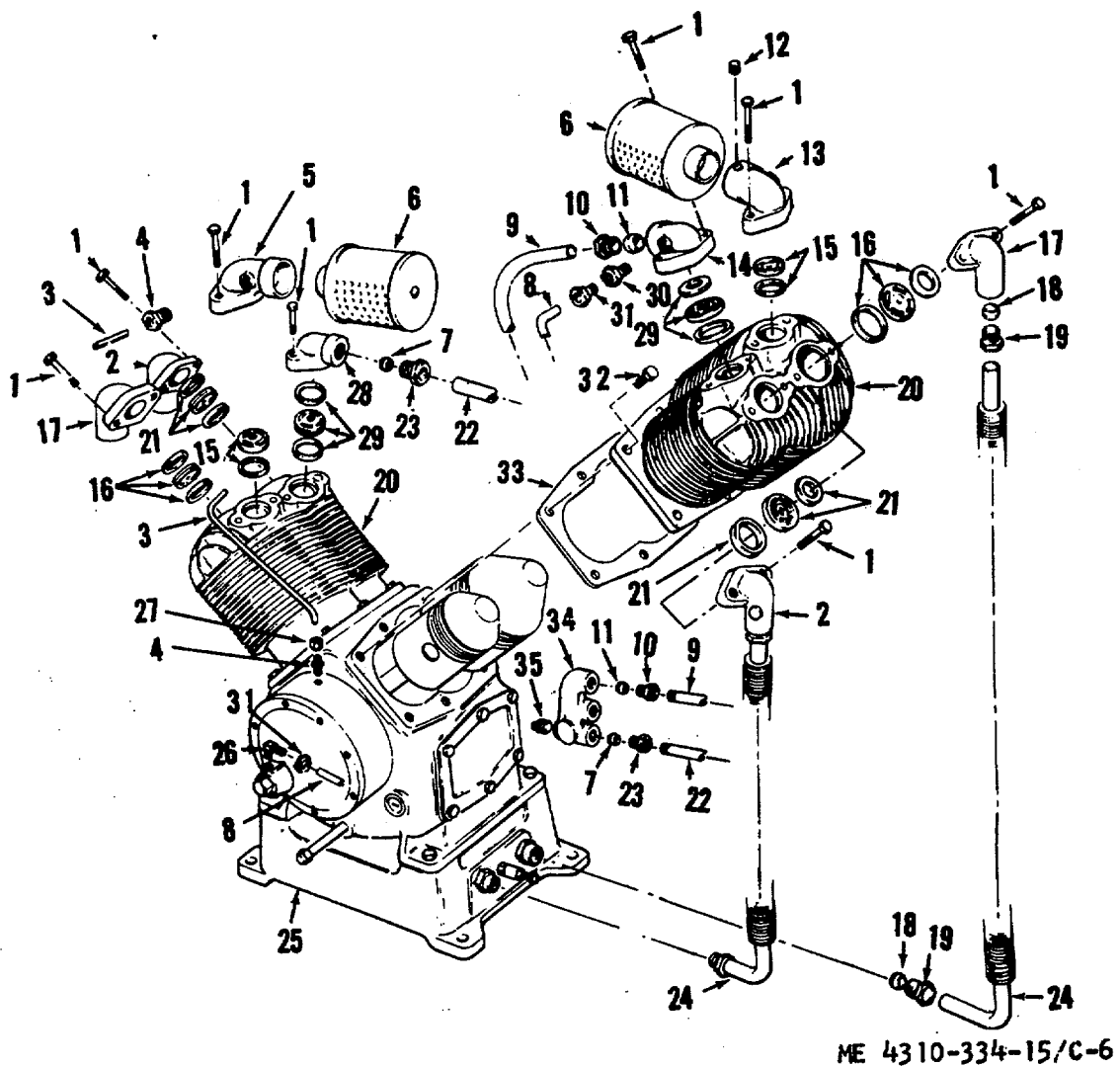
Figure 6. Magnetic starter.



ME 4310-334-15/C-5

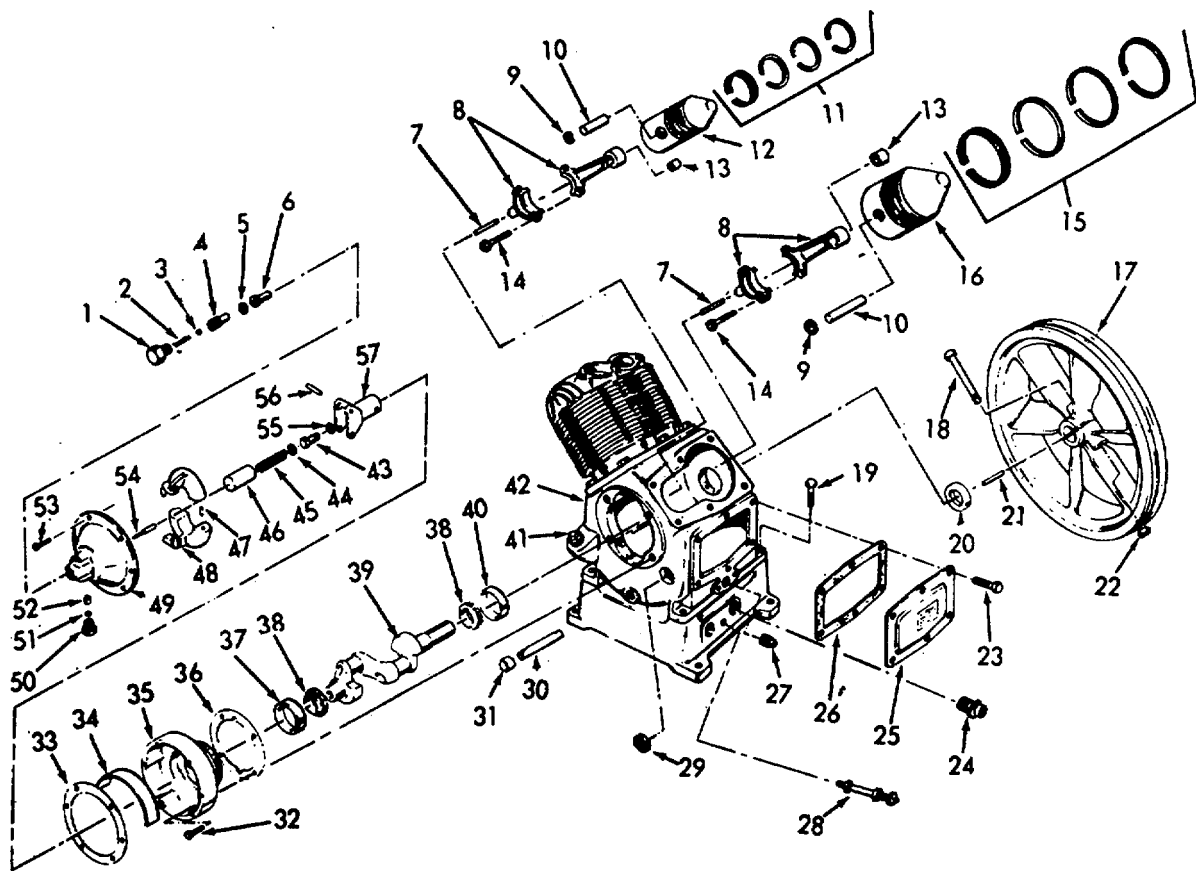
- |              |             |                 |
|--------------|-------------|-----------------|
| 1 Belts      | 10 Plug     | 19 Nut          |
| 2 Compressor | 11 Elbow    | 20 Cock         |
| 3 Pulley     | 12 Valve    | 21 Gage         |
| 4 Setscrew   | 13 Nipple   | 22 Plug         |
| 5 Key        | 14 Elbow    | 23 Receiver     |
| 6 Motor      | 15 Nipple   | 24 Plug         |
| 7 Washer     | 16 Valve    | 25 Valve        |
| 8 Screw      | 17 Bushing- | 26 Inverted Nut |
| 9 Sleeve     | 18 Washer   | 27 Adapter      |
|              |             | 28 Tube         |

Figure 7. Compressor, Motor and Air Receiver.



- |    |                  |    |                |    |                |
|----|------------------|----|----------------|----|----------------|
| 1  | Screw            | 12 | Setscrew       | 24 | Tube           |
| 2  | Manifold         | 13 | Manifold       | 25 | Sub-Base       |
| 3  | Tube             | 14 | Manifold       | 26 | Elbow          |
| 4  | Adapter          | 15 | Valve Assembly | 27 | Nut            |
| 5  | Manifold         | 16 | Valve Assembly | 28 | Manifold       |
| 6  | Muffler Assembly | 17 | Manifold       | 29 | Valve Assembly |
| 7  | Sleeve           | 18 | Sleeve         | 30 | Coupling       |
| 8  | Tube             | 19 | Inverted Nut   | 31 | Inverted Nut   |
| 9  | Tube             | 20 | Cylinder       | 32 | Screw          |
| 10 | Inverted Nut     | 21 | Valve Assembly | 33 | Gasket         |
| 11 | Sleeve           | 22 | Tube           | 34 | Manifold       |
|    |                  | 23 | Inverted Nut   | 35 | Plug           |

Figure 8. Compressor Lines and Cylinder.



ME 4310-334-15/C-7

1	Cap	15	Ring Set	29	Window	43	Screw
2	Spring	16	Piston	30	Nipple	44	Washer
3	Ball	17	Flywheel	31	Cap	45	Spring
4	Body	18	Bolt	32	Screw	46	Guide
5	Gasket	19	Screw	33	Gasket	47	Spring
6	Bearing	20	Seal	34	Plate	48	Weight
7	Dipper	21	Key	35	Housing	49	Cover
8	Rod	22	Nut	36	Gasket	50	Body
9	Ring	23	Bolt	37	Cup	51	Felt
10	Pin	24	Adapter	38	Cone & Rollers	52	Screen
11	Ring Set	25	Plate	39	Crankshaft	53	Screw
12	Piston	26	Gasket	40	Cup	54	Plunger
13	Bearing	27	Plug	41	Plug	55	Washer
14	Bolt	28	Valve Assembly	42	Crankcase	56	Pin
						57	Spindle

Figure 9. Compressor Components.

APPENDIX A

BASIC ISSUE ITEMS LIST

Section I. INTRODUCTION

**A-1. Scope**

This appendix lists items which accompany the air compressor or are required for installation, operation, or operator's manual.

**A-2. Explanation of Columns**

The following provides an explanation of columns in the tabular list of Basic Issue Items, Section II.

a. *Source Maintenance, and Recoverability Codes (SMR).*

**Note.**

**Common hardware items known to be readily available in Army supply will be assigned Maintenance Codes only. Source Codes, Recoverability Codes, and Quantity Authorized will not be assigned to this category of items.**

*Column 1:*

(1) Source Code, indicates the selection status and source for the listed item. Source code is:

Code	Explanation
P	Applied to repair parts which are stocked in or supplied from GSA/DSA or Army supply system, and authorized for use at indicated maintenance categories.

(2) Maintenance Code, indicates the lowest category of maintenance authorized to install the listed item. The maintenance level code is:

Code	Explanation
C	Operator/crew

(3) Recoverability Code, indicates whether unserviceable items should be returned for recovery or salvage. Items not coded are expendable.

b. *Federal Stock Number, Column 2.* This column indicates the Federal stock number for the item.

c. *Description, Column 3.* This column indicates the Federal item name and any additional description of the item required. A part number or other reference number is followed by the applicable five-digit Federal supply code for manufacturers in parentheses.

d. *Unit of Issue, Column 4.* This column indicates the unit used as basis for issue, e.g., ea, pr, ft, yd, etc.

e. *Quantity Furnished With Equipment, Column 5.* This column indicates the quantity of an item furnished with the equipment.

f. *Quantity Authorized, Column 6.* This column indicates the quantity of an item authorized the operator/crew to have on hand or to obtain as required. As required items are indicated with an asterisk.

(1) Source, maint, and recov code			(2) Federal stock no.	(3) Description	(4) Unit of issue equip	(5) Qty furn with	(6) Qty auth
(A) S	(B) M	(C) R					
P	C		7520-559-9618 7510-244-0359	3100-BASIC ISSUE ITEMS, MANUFACTURER OR DEPOT INSTALLED			
P	C			CASE: maintenance and operational manuals PLASTIC CONTAINER: logbook binder	ea ea	1 1	1 1

(1) Source, maint, and recov code			(2) Federal stock no.	(3) Description	(4) Unit of issue equip	(5) Qty furn with	(6) Qty auth
(A) S	(B) M	(C) R					
P	C	--	7510-889-3494	BINDER: loose leaf	ea	1	1
P	C	--	-----	DEPARTMENT OF THE ARMY LUBRICATION ORDER LO -4310-334-12	ea	1	1
P	C	--	-----	DEPARTMENT OF THE ARMY OPERATOR, ORGANIZATIONAL, DS. GS, AND DEPOT MAINTENANCE MANUAL TM 5-4310-334-16 3200-BASIC ISSUE ITEMS TROOP INSTALLED OR AUTHORIZED	ea	1	1
P	C	--	4210-55-8837	EXTINGUISHER, FIRE: Monobromotrifliromethane changed, hand, penetrating seal valve, stored pressure w/bracket, 2.75 lb.	ea	1	*

## APPENDIX B

## MAINTENANCE ALLOCATION CHART

## Section I. INTRODUCTION

**B-1. General**

a. This section provides a general explanation of all maintenance and repair functions authorized at various maintenance levels.

b. Section II designates overall responsibility for the performance of maintenance functions upon the identified end item or component. The implementation of the maintenance functions upon the end item or component will be consistent with the assigned maintenance functions.

**B-2. Explanation of Columns in Section II**

a. *Group Number. Column 1.* The functional group is a numerical group set up on a functional basis. The applicable functional grouping indexes (obtained from TB 75093-1, Functional Grouping Codes) are listed on the MAC in the appropriate numerical sequence. These indexes are normally set up in accordance with their function and proximity to each other.

b. *Functional Group. Column 2.* This column contains a brief description of the components of each functional group.

c. *Maintenance Functions. Column 3.* This column lists the various maintenance functions (A through 'K) and indicates the lowest maintenance category authorized to perform the functions. The symbol dig s for the various maintenance categories are as follows:

C-- Operator or crew  
O-- Organizational maintenance  
F-- Direct Support maintenance

H-- General support maintenance

D-- Depot Maintenance

The maintenance functions are defined as follows:

A-INSPECT. To determine serviceability of an item by comparing its physical, mechanical, and electrical characteristics with established standards.

B-TEST. To verify serviceability and to detect electrical or mechanical failure by use of test equipment.

C-SERVICE. To clean, to preserve, to charge, to paint, and to add fuel, lubricants, cooling agents, and air.

D-ADJUST. To rectify to the extent necessary to bring into proper operating range.

E-ALIGN. To adjust specified variable elements of an item to bring to optimum performance.

F-CALIBRATE. To determine the corrections to be made in the readings of instruments or test equipment used in precise measurement. Consists of the comparisons of two instruments, one of which is a certified standard of known accuracy, to detect and adjust any discrepancy in the accuracy of the instrument being compared with the certified standard.

G-INSTALL. To set up for use in an operational environment such as an emplacement, site, or vehicle.

H-REPLACE. To replace unserviceable items with serviceable assemblies, subassemblies, or parts.



I-REPAIR. To restore an item to serviceable condition. This includes, but is not limited to, inspection, cleaning, preserving, adjusting, replacing, welding, riveting, and strengthening.

K-REBUILD. To restore an item to a standard as nearly as possible to original or new condition in appearance, performance, and life expectancy. This is accomplished through complete disassembly of the item, inspection of all parts or components, repair or replacement of worn or unserviceable elements (items) using original manufacturing tolerances and specifications, and subsequent reassembly of the item.

J-OVERHAUL. To restore an item to a completely serviceable condition as prescribed by maintenance serviceability standards using the Inspect and Repair Only as Necessary (IROAN) technique.

(1)  GROUP NO.	(2)  FUNCTIONAL GROUP	(3) Maintenance functions										
		A	B	C	D	E	F	G	H	I	J	K
		I N S P E C T	T E S T	S E R V I C E	A D J U S T	A L I G N	C A L I B R A T E	I N S T A L L	R E P L A C E	R E P A I R	O V E R H A U L	R E B U I L D
22	BODY CHASSIS OR HULL, AND ACCESSORY ITEMS											
2210	Data Plates and Instruction Holders: Plate, Instruction Plate, Data (AIP)									O		
40	ELECTRIC MOTORS AND GENERATOR											
4000	Motor Assembly: Motor, Electric									O	F	D
4001	Rotor Assembly: Rotor, Motor		F	---	---	---	---	---		F	F	D
4002	Stator Assembly: Stator, Motor									F	F	D
4004	Ventilating System: Fan									F		
4005	Frame Support and Housing: Brackets, End Bearings, Rotor Shields, Dust	F	---	---	---	---	---	---	---	F		
4006	Starting & Protective Devices: Starter, Magnetic Switch, Pressure, Automatic									O	O	
4009	Control Panels, Housing Cubicles: Wire; Connectors; Conduit	O	---	---	---	---	---	---	---	O		
47	GAGES, WEIGHING AND MEASURING DEVICES											
4702	Gages, Mountings, Lines, and Fittings: Indicator, Sight, Liquid Gage, Pressure, Dial, Indicating and Tire									O		
50	PNEUMATIC EQUIPMENT											
5000	Air (Compressor Assembly: Compressor, Reciprocating Bolt, Lifting Eye Bolt, Tie-Down	C		C	---	---	---	---	O	O	H	

(1)  GROUP NO.	(2)  FUNCTIONAL GROUP	(3) Maintenance functions										
		A	B	C	D	E	F	G	H	I	J	K
		I N S P E C T	T E S T	S E R V I C E	A D J U S T	A L I G N	C A L I B R A T E	I N S T A L L	R E P L A C E	R E P A I R	O V E R H A U L	R E B U I L D
5001	Crankcase, Cylinder Head: Cover Plate, Access Crankcase, Compressor Cylinder, Air								O F F	F		
5002	Crankshaft: Crankshaft Seal, Plain Encased bearings								F F F			
5003	Flywheel Assembly: Flywheel, Compressor								O			
5004	Pistons, Connecting Rods: Piston Assemblies, Compressor Ring, Piston Pin Rod. Assembly, Connecting								F F F	F F		
5005	Valves: Valves; Springs Housing, Valve Disk, Valve	F	---	---	---	---	---	---	F F F			
5006	Lubrication System: Tube, Breather								O			
5007	Compressor Drive: Belt, "V", Compressor Drive Guard, Belt Pulley, Drive	C	---	---	O	---	---	---	O O O			
5008	Air Intakes: Manifold, Intake Air Cleaner Muffler, Air Intake			C	---	---	---	---	O O O			
5009	Unloader System Components: Valve, Safety Relief Plunger; Spring; Ball Body; Cover, Governor Spring; Sleeve, Governor Weight, Control Spindle, Governor Valve, Safety, Valve, Check Lines; Fittings Manifold, After Cooler				O	---	---	---	O O O O O O O O O	O		
5010	Compressor Cooling & Heating: Manifold, Intake & Exhaust Tube, Intercooler-aftercooler								O O	O		
5014	Air Receiver: Tank, Air Receiver		O	C	---	---	---	---	O	O		
5015	Air Discharge System Valve, Globe Hose Assembly								O O			

APPENDIX C

REPAIR PARTS AND SPECIAL TOOL LIST

Section I. INTRODUCTION

**C-1. Scope**

This appendix lists repair parts required for the performance of organizational, direct support, general support, and depot maintenance of the 25 CFM Compressor.

**C-2. General**

a. The repair parts list is arranged as follows:

(1) Individual parts and major assemblies are listed alphabetically by item name within the numbered functional groups.

(2) Assembly components and subassemblies are indented and listed alphabetically by item name under major assemblies.

b. This Repair Parts and Special Tools List is divided into the following sections:

(1) *Prescribed Load Allowance (PLA)--Section II.* A consolidated listing of repair parts quantitatively allocated for initial stockage at the organizational level. This is a mandatory minimum stockage allowance.

(2) *Special Tools, Test and Support Equipment.* No special tools, test or support equipment required for the performance of maintenance at the organizational level.

(8) *Repair Parts-Section III.* A list of repair parts authorized for the performance of maintenance at the organizational level.

(4) *Repair Parts-Section IV.* A list of repair parts authorized for the performance of maintenance at the direct support, general support, and. depot level.

(5) *Special Tools, Test and Support Equipment.* No special tools, test or support equipment required for the performance of maintenance at the direct support, general support, and depot level.

(6) *Federal Stock Number and Reference Number Index--Section V.* A list of Federal stock numbers followed by reference numbers, appearing in

all the listings, in ascending alphanumeric sequence cross-referenced to index number.

**C-3. Explanation of Columns**

The following provides an explanation of columns in the tabular lists in sections II through IV.

a. *Source, Maintenance, and Recoverability Codes (SMR).*

*Note.* Common hardware items known to be readily available in Army supply channels will be assigned Maintenance codes only. Source codes, Recoverability codes, and Maintenance Allowance will not be assigned to this category.

(1) *Source Code.* Indicates the selection status and source for listed item. Source codes used are:

Code	Explanation
P	Applied to repair parts which are stocked in or supplied from DSA/GSA or Army supply system, and authorized for use at indicated categories.
M	Applied to repair parts which are not procured or stocked but are to be manufactured at indicated maintenance categories.
A	Applied to assemblies which are not procured or stocked as such but made up of two or more units, each of which carry individual stock numbers and descriptions and are procured and stocked and can be assembled by units at indicated maintenance categories.
X	Applied to parts and assemblies which are not procured or stocked, the mortality of which is normally below that of the applicable end item, and the failure of which should result in retirement of the end item from the supply system.

Code	Explanation
X1	Applied to repair parts which are not procured or stocked, the requirement for which will be supplied by use of the next higher assembly or components.
X2	Applied to repair parts which are not stocked. The indicated maintenance category requiring such repair parts will attempt to obtain them through cannibalization; if not obtainable through cannibalization, such repair parts will be requisitioned with supporting justification through normal supply channels.
C	Applied to repair parts authorized for local procurements. If not obtainable from local procurement, such repair parts will be requisitioned through normal supply channels with a supporting statement of nonavailability from local procurement.
G	Applied to major assemblies that are procured with PEMA (Procurement Equipment Missile Army) funds for initial issue only to be used as exchange assemblies at DSU and GSU maintenance level. These assemblies will not be stocked above DSU and GSU level or returned to depot supply level.

(2) *Maintenance Code.* Indicates the lowest category of maintenance authorized to install the listed item. The maintenance level codes are:

Code	Explanation
O	Organizational maintenance
F	Direct Support maintenance
H	General support maintenance
D	Depot maintenance

(3) *Recoverability Code.* Indicates whether unserviceable items should be returned for recovery or salvage. Items not coded are expendable. Recoverability codes are:

Code	Explanation
R	Applied to repair parts and assemblies which are economically repairable at DSU and GSU activities and normally are furnished by supply on an exchange basis.
T	Applied to high dollar value recoverable repair parts which are subject to special handling and are issued on an

exchange basis. Such repair parts normally are repaired or overhauled at depot maintenance activities.

U Applied to repair parts specifically selected for salvage by reclamation units because of precious metal content, critical materials, high dollar value reusable casings or castings.

(4) This column also lists, below the SMR code, an index number for each item in ascending numerical sequence, which is used to locate items in the publication when the Federal stock number and/or reference number is known.

*b. Federal Stock Number.* Indicates the Federal stock number for the item.

*c. Description.* Indicates the Federal item name and any additional description of the item required. A part number or other reference number is followed by the applicable five-digit Federal supply code for manufacturers in parentheses.

*d. Unit of Issue.* Indicates the unit used as a basis for issue, e.g., ea, pr, ft, yd, etc.

*e. Quantity Incorporated in Unit Pack.* Indicates the actual quantity contained in the unit pack.

*f. Quantity Incorporated in Unit.* Indicates the quantity of the item used in the functional group.

*g. Fifteen-Day Organizational Maintenance Allowances.*

(1) The allowance columns are divided into four sub-columns. Indicated in each sub-column opposite the first appearance of each item is the total quantity of items authorized for the number of equipments supported. Subsequent appearances of the same item will have no entry in the allowance columns but will have in the description column a reference to the first appearance of the item. Items authorized for use as required but not for initial stockage are identified with an asterisk in the allowance column.

(2) The quantitative allowances for organizational level of maintenance represents one initial prescribed load for a 15-day period for the number of equipments supported. Units and organizations authorized additional prescribed loads will multiply the number of prescribed loads authorized by the quantity of repair parts reflected in the appropriate density column to obtain the total quantity of repair parts authorized.

(3) Organizational units providing maintenance for more than .100 of these equipments shall determine the total quantity of parts required by converting the equipment quantity to a decimal factor by placing a decimal point before the next to last digit of

the number to indicate hundredths, and multiplying the decimal factor by the parts quantity authorized in the 51-100 allowance column. Example, authorized allowance for 51-100 equipments is 12; for 140 equipments multiply 12 by 1.40 or 16.80 rounded off to 17 parts required.

(4) Subsequent changes to allowances will be limited as follows: No change in the range of items is authorized. If additional items are considered necessary, recommendation should be forwarded to U. S. Army Mobility Equipment Command for exception or revision to the allowance list. Revisions to the range of items authorized will be made by this Command based upon engineering experience, demand data, or TAERS information.

*h. Thirty-Day DS/GS Maintenance Allowances.*

(1) The allowance columns are divided into three subcolumns. Indicated in each subcolumn, opposite the first appearance of each item, is the total quantity of items authorized for the number of equipments supported. Subsequent appearances of the same item will have no entry in the allowance column, but will have in the description column a reference to the first appearance of the item. Items authorized for use as required but not for initial stockage are identified with an asterisk in the allowance column.

(2) The quantitative allowances for DS/GS levels of maintenance will represent initial stockage for a 30-day period for the number of equipments supported.

(3) Determination of the total quantity of parts required for maintenance of more than 100 of these equipments can be accomplished by converting the equipment quantity to a decimal factor by placing a decimal point before the next to last digit of the number to indicate hundredths, and multiplying the decimal factor by the parts quantity authorized in the 51-100 allowance column. Example, authorized allowance for 51-100 equipments is 40; for 150 equipments multiply 40 by 1.50 or 60 parts required.

*i. One-Year Allowances Per 100 Equipments/Contingency Planning Purposes.* Indicates opposite the

first appearance of each item the total quantity required for distribution and contingency planning purposes. The range of items indicates total quantities of all authorized items required to provide for adequate support of 100 equipments for one year.

*j. Depot Maintenance Allowance Per 100 Equipments.* Indicates opposite the first appearance of each item the total quantity authorized for depot maintenance of 100 equipments. Subsequent appearances of the same item will have no entry in this column, but will have in the description column a reference to the first appearance of the item. Items authorized for use but not for initial stockage are identified with an asterisk in the allowance column.

*k. Illustration.*

(1) *Figure Number.* Indicates the figure number of the illustration in which the item is shown.

(2) *Item Number* Indicates the callout number used to reference the item in the illustration.

#### **C-4. Special Information**

*a.* Repair parts mortality has been based on 1200 hours of operation per year.

*b.* Parts which require manufacture or assembly at a category higher than that authorized for installation will indicate in the source column -the higher category.

#### **C-5. How to Locate Repair Parts**

*a.* When Federal Stock Number or reference number is unknown:

(1) *First.* Using the table of contents, determine the functional group or subgroup within which the repair part belongs. This will refer to a page in the parts listing.

(2) *Second.* The illustration column of the page refers to a figure number.

(3) *Third.* Locate the figure and identify -the repair-parts, noting the item number.

(4) *Fourth.* Refer back to the page of the parts listing. Find the item number in the illustration column that corresponds with the figure number.

b. When Federal Stock number or reference number is known: .

(1) *First.* Using the Index of Federal Stock Numbers and Reference Numbers, find the pertinent Federal stock number or reference number. This index is in ascending alpha-numeric sequence cross-referenced to an index number.

(2) *Second.* Using the Repair Part Listing, find the index number referenced in the index of Federal Stock .Numbers and Reference Numbers.

**C-6. Abbreviations**

Abbreviations	Explanation
dia.....	diameter
hp .	horsepower
lbs .....	pounds
mtg .....	mounting
thd .....	thread

Abbreviations	Explanation
thk.....	thick
V.....	Volts

**C-7. Federal Supply Codes for Manufacturers**

Code	Manufacturer
11568.....	Champion Pneumatic Equipment Co.
23826 .....	Furnas Electric Co.
86282.....	Lincoln Electric Co.
60088 .....	Timken Roller Bearing Co.
70925 .....	Bijur Lubricating Corp.
78559 .....	Carling Electric Inc
75886 .....	Kingston, L. F. Co.
79150.....	Victor Mfg. and Gasket Co.
80201.....	Chicago Rawhide Mfg. Co.
80844 .....	Rubber Manufacturers Association Inc.
94894 .....	Milton Manufacturing Co., In
96906 .....	Military Standards Promulgated by Standardization Div, Directorate of Logistic Services DSA

**Section II. PRESCRIBED LOAD ALLOWANCE**

(1) Federal Stock Number	(2) Description  Usable on Code	(3) Qty Inc. in Unit Pack	(4) 15-Day Org Maint. ALW			
			(A) 1-5	(B) 6-20	(C) 21-50	(D) 51-100
3030-618-1359	5007--COMPRESSOR DRIVE BELTS, V, MATCHED SET: 3 belts per set B81-8 (80844)		*	*	2	2

(1) SMR CODE INDEX NO.	(2) FEDERAL STOCK NUMBER	(3) DESCRIPTION  REFERENCE NO. & MFR CODE  USABLE ON CODE		(4) UNIT OF ISSUE	(5) QTY INC IN UNIT PACK	(6) QTY INC IN UNIT	(7) 15 DAY ORGANIZATIONAL MAINTENANCE ALW				(8) ILLUS- TRATION	
							(a)	(b)	(c)	(d)	(a)	(b)
							1-5	6-20	21-50	51-100	FIG NO.	ITEM NO.
00001		SECTION III- REPAIR PARTS FOR ORGANIZATIONAL MAINTENANCE										
00007		GROUP 40 - ELECTRIC MOTORS AND GENERATORS										
00022		4005 - FRAME SUPPORT AND NOUSING										
X20 00026		CAP, FITTING: LUBRICATION (36232) T11684		EA	1	2					C1	8
0 00029	4730-010-4902	FITTING, LUBRICATION (36232) T11683-1		EA	1	2					C1	9
00033		4006 - STARTING AND PROTECTIVE DEVICES										
P 0 00034	6110-802-6785	HEATER, THERMAL RELEASE: 208 (23826) H42		EA	1	2	*	*	*	*	C3	5
P 0 00035	6110-802-6784	HEATER, THERMAL RELEASE: 416v (23826) H35		EA	1	2	*	*	*	*	C3	8
00069		GROUP 47 - GAGES, WEIGHING, AND MEASURING DEVICES										
00070		4702 - GAGES, NOUNTINGS, LINES AND FITTINGS										
P 0 00071	6685-264-3961	GAGE, PRESSURE, DIAL: 0-300 LBS. (94894) 20-1000-2LXTS		EA	1	1	*	*	*	*	C5	21
P 0 00072	4910-030-2365	GAGE, TIRE PRESSURE: INFLATOR (94894) G1506		EA	1	1	*	*	*	*	C4	
X1 00073		CHAIN LINK: HOSE TO GASE, 11 IN. LG (94894) 1507		EA	1	2					C4	2

(1) SMR CODE INDEX NO.	(2) FEDERAL STOCK NUMBER	(3) DESCRIPTION  REFERENCE NO. & MFR CODE  USABLE ON CODE		(4) UNIT OF ISSUE	(5) QTY INC IN UNIT PACK	(6) QTY INC IN UNIT	(7) 15 DAY ORGANIZATIONAL MAINTENANCE ALW				(8) ILLUS- TRATION	
							(a)	(b)	(c)	(d)	(a) FIG NO.	(b) ITEM NO.
							1-5	6-20	21-50	51-100		
X1 00074	6685-910-8359	COUPLING: HOSE (91894) 61F1-715		EA	1	1					C4	7
X1 00075		GAGE, TIRE PRESSURE (94894) STD506		EA	1	1					C4	4
X1 00076		GAGE PRESSURE: JUMBO (94894) 1506		EA	1	1					C4	1
X1 00077		PLUG: GAGE END (94894) 729		EA	1	1					C4	8
X1 00078		PROBE, STANDARD (94894) 5004		EA	1	1					C4	6
X1 00079		PLUG: GAGE END (94894) 729		EA	1	1					C4	8
X1 00080		HOSE, WHIP (94894) 506-32		EA	1	1					C4	3
X1 00081		RING, KEY: CHAIN TO GAGE (94894) 1509		EA	1	2					C4	5
X1 00082		RING, KEY: HOSE TO CHAIN (94894) 1508		EA	1	1					C4	9
00084	4730-585-2816	GROUP 50 - PNEUMATIC EQUIPMENT										
00091		5001 - CRANKCASE, CYLINDER HEAD										
0 00093		ADAPTER, STRAIGHT, PIPE TO TUBE: 3/4 IN. PIPE SIZE, 3/4 IN. TUBE SIZE (11568) RE10-99		EA	1	4					C7	24
X20 00103		VALVE ASSEMBLY, INTERSTAGE SAFETY (75336) 112C70		EA	1	1					C7	28



(1) SMR CODE INDEX NO.	(2) FEDERAL STOCK NUMBER	(3) DESCRIPTION  REFERENCE NO. & MFR CODE  USABLE ON CODE		(4) UNIT OF ISSUE	(5) QTY INC IN UNIT PACK	(6) QTY INC IN UNIT	(7) 15 DAY ORGANIZATIONAL MAINTENANCE ALW				(8) ILLUS- TRATION	
							(a)	(b)	(c)	(d)	(a)	(b)
							1-5	6-20	21-50	51-100	FIG NO.	ITEM NO.
00130		5005 - VALVES										
0 00165	5310-013-8479	WASHER, LOCK: VALVE, No. 10 SCREW SIZE (96906) MS35335-7		EA	1	2					C8	3
00166		5006 - LUBRICATION SYSTEM										
0 00167	4730-228-1619	CAP, PIPE: OIL DRAIN, 3/8 IN. (11568) M461		EA	1						C7	31
A O 00168		COUPLING: BREATHER TUBE (11568) Z509		EA	1	2						
0 00169	4730-273-8561	ADAPTER, STRAIGHT, PIPE TO TUBE: 1/4 IN. PIPE, 3/8 IN. TUBE (11568) M509		EA	1	2					C6	4
0 00170	4730-287-1537	NUT, TUBE COUPLING: 3/8 IN. TUBE SIZE (11568) NRS48		EA	1	2					C6	27
0 00171	4730-366-1994	NIPPLE, PIPE: OIL DRAIN, 3/8 IN. DIA, 8 IN. LG (11568) M10-37B		EA	1	1					C7	30
0 00172	4730-263-3122	PLUG, PIPE: OIL 1/2 IN. (11568) M48		EA	1	2					C7	27
0 00173	4730-263-3124	PLUG, PIPE: OIL FILL, 3/4 IN. (11568) M459		EA	1	1					C7	41
X20 00174		TUBE, BREATHER (11568) UB375B		EA	1	1					C6	3
00175		5007 - COMPRESSOR DRIVE										
P 0 00176	3030-618-1359	BELTS. V MATCHED SET: 3 BELTS PER SET (80844) B81-3		EA	1	1	*	*	2	2	C5	1
X20 00177		GUARD ASSEMBLY, BELT (11568) Z290		EA	1	1					C10	

(1) SMR CODE INDEX NO.	(2) FEDERAL STOCK NUMBER	(3) DESCRIPTION  REFERENCE NO. & MFR CODE  USABLE ON CODE		(4) UNIT OF ISSUE	(5) QTY INC IN UNIT PACK	(6) QTY INC IN UNIT	(7) 15 DAY ORGANIZATIONAL MAINTENANCE ALW				(8) ILLUS- TRATION	
							(a)	(b)	(c)	(d)	(a)	(b)
							1-5	6-20	21-50	51-100	FIG NO.	ITEM NO.
X20 00178		BRACKET: BELT GUARD (11568) Z290-1		EA	1	1					C10	6
X20 00179		BRACKET: BELT GUARD (11568) Z290-4		EA	1	1					C10	12
X20 00180		BRACKET: BELT GUARD (11568) Z290-3		EA	1	1					C10	7
X20 00181		BRACKET: BELT GUARD (11568) Z290-2		EA	1	1					C10	4
0 00182	5310-176-8141	NUT, PLAIN, HEXAGON: BELT GUARD BRACKET, 5/16-18 THD SIZE (96906) AN340-516		EA	1	1					C10	1
X20 00183		SHELL, BELT GUARD (11568) Z290-6		EA	1	1					C10	5
0 00184	5310-194-7307	WASHER, FLAT: BELT GUARD BRACKET, 5/16 IN. SCREW SIZE (96906) MS15795-12		EA	1	8					C10	3
0 00185	5310-010-3320	WASHER, LOCK: BELT GUARD BRACKET, 5/16 IN. SCREW SIZE (96906) MS535338-7		EA	1	8					C10	2
0 00187	5310-011-3739	NUT, PLAIN, HEXAGON: BELT GUARD MTG, 1/4-20 THD SIZE (11568) M907A		EA	1	4					C10	8
0 00189	5305-068-0502	SCREW, CAP, HEXAGON HEAD: BELT GUARD MTG, 1/4-20 THD SIZE, 3/4 IN. LG (11568) M696		EA	1	4					C10	11
0 00191	5310-809-4058	WASHER, FLAT: BELT GUARD MTG, 1/4 IN. SCREW SIZE (11568) M905A		EA	1	8					C10	10
0 00192	5310-012-1753	WASHER, LOCK: BELT GUARD MTG, 1/4 IN. SCREW SIZE (11568) M919A		EA	1	4					C10	9

(1) SMR CODE INDEX NO.	(2) FEDERAL STOCK NUMBER	(3) DESCRIPTION  REFERENCE NO. & MFR CODE  USABLE ON CODE		(4) UNIT OF ISSUE	(5) QTY INC IN UNIT PACK	(6) QTY INC IN UNIT	(7) 15 DAY ORGANIZATIONAL MAINTENANCE ALW				(8) ILLUS- TRATION	
							(a)	(b)	(c)	(d)	(a)	(b)
							1-5	6-20	21-50	51-100	FIG NO.	ITEM NO.
00193		5008 - AIR INTAKE										
X20 00194		MANIFOLD, HIGH PRESSURE EXHAUST (11568) SE5-2B		EA	1	1					C6	28
X20 00195		MANIFOLD, HIGH PRESSURE, EXHAUST (11568) SE5-2A		EA	1	1					C6	14
X20 00196		MANIFOLD, HIGH PRESSURE INTAKE (11568) NR2B		EA	1	2					C6	2
X20 00197		MANIFOLD, LOW PRESSURE, EXHAUST (11568) RE10-2E		EA	1	2					C6	17
X20 00198		MANIFOLD, LOW PRESSURE INTAKE, LEFT (11568) R10B2		EA	1	1					C6	5
X20 00199		MANIFOLD, LOW PRESSURE INTAKE, RIGHT (11568) R30-2		EA	1	1					C6	13
X20 00200		MUFFLER ASSEMBLY, INTAKE (11568) Z66A		EA	1	2					C6	6
X20 00201	4310-993-4188	COVER, FILTER, LOWER (11568) M30		EA	1	2					C9	3
X20 00202		COVER, UPPER (11568) M31A		EA	1	2					C9	7
X20 00203		ELEMENT: BREATHER (11568) M673		EA	1	2					C9	6
0 00204	5310-402-6893	NUT, PLAIN, HEXAGON: COVER MTG, No. 10-32 THD SIZE (11568) AN340C10		EA	1	2					C9	1
X20 00205		PLATE: BREATHER (11568) M54C		EA	1	2					C9	2
X20 00206		SCREEN: BREATHER (11568) M674		EA	1	2					C9	5

(1) SMR CODE INDEX NO.	(2) FEDERAL STOCK NUMBER	(3) DESCRIPTION  REFERENCE NO. & MFR CODE  USABLE ON CODE		(4) UNIT OF ISSUE	(5) QTY INC IN UNIT PACK	(6) QTY INC IN UNIT	(7) 15 DAY ORGANIZATIONAL MAINTENANCE ALW				(8) ILLUS- TRATION	
							(a)	(b)	(c)	(d)	(a)	(b)
							1-5	6-20	21-50	51-100	FIG NO.	ITEM NO.
0 00207	5305-286-1960	SCREW, MACHINE: COVER MTG No. 10-32 THD SIZE 5 7/16 IN. LG (96906) AN515C10-88		EA	1	2					C9	4
0 00208	5305-531-1781	SCREW CAP, HEXAGON HEAD: MAINFOLD MGT, 3/8-16 THD SIZE, 1 3/4 IN. LG (11568) M944A		EA	1	16					C6	1
0 00209	5305-010-2705	SETSCREW: MUFFLER MTG, 1/4-20 THD SIZE, 1/4 IN. LG (11568) M432		EA	1	2					C6	12
00210		5009 - UNLOADER SYSTEM COMPONENTS										
0 00216	4730-193-7080	ELBOW, PIPE: CHECK VALVE, 3/4 IN. DIA, MALE AND FEMALE ENDS (11568) SE5-19		EA	1	2					C5	14
0 00217	4730-249-3900	ELBOW, PIPE: CHECK VALVE, 1/2 IN. MALE END, 3/4 IN. FEMALE END (11568) M932B		EA	1	1					C5	11
0 00234	4730-021-9668	NIPPLE, PIPE: CHECK VALVE, 3/4 IN. DIA, 8 IN. LG (11568) M1024B		EA	1	1					C5	13
0 00237	4730-044-4617	PLUG, PIPE: CHECK VALVE 1/4 IN. DIA (11568) M4814		EA	1	1					C5	10
X20 00244		VALVE, CHECK (11568) ZR44		EA	1	1					C5	12
X1 00245		BODY VALVE (11568) R10-44B		EA	1	1					C11	1
X20 00246	5330-584-9010	GASKET: CHECK VALVE (11568) RE10-66		EA	1	1					C11	4
X20 00247		PACKING, PREFORMED: CHECK VALVE PLUG (11568) OR218		EA	1	1					C11	2
X20 00248		PLUG: CHECK VALVE (11568) M806		EA	1	1					C11	5

(1) SMR CODE INDEX NO.	(2) FEDERAL STOCK NUMBER	(3) DESCRIPTION  REFERENCE NO. & MFR CODE  USABLE ON CODE		(4) UNIT OF ISSUE	(5) QTY INC IN UNIT PACK	(6) QTY INC IN UNIT	(7) 15 DAY ORGANIZATIONAL MAINTENANCE ALW				(8) ILLUS- TRATION	
							(a)	(b)	(c)	(d)	(a) FIG NO.	(b) ITEM NO.
							1-5	6-20	21-50	51-100		
X20 00249		VALVE ASSEMBLY, AIR: CHECK VALVE (11568) Z114		EA	1	1					C11	3
P 0 00250	4820-287-4084	VALVE; SAFETY RELIEF (75336) 112		EA	1	1	*	*	*	*	C5	25
00254		5010 - COMPRESSOR COOLING AND HEATING										
0 00255	4730-585-2816	ADAPTER, STRAIGHTI PIPE TO TUBE: AFTERCOOLER TUBE, 3/1 IN. PIPE, 3/4 IN. TUBE (11568) RE10-99		EA	1	1					C5	27
A 00256		COUPLING: RELEASE VALVE TUBE (11568) Z441		EA	1	1						
0 00257	4730-222-3902	COUPLING, STRAIGHT PIPE TO TUBE: 1/8 IN. PIPE, 1/4 IN. TUBE (11568) M441		EA	1	1					C6	30
0 00258	4730-142-1593	NUT, TUBE COUPLING: 1/4 IN. TUBE SIZE (11568) M27		EA	1	1					C6	31
0 00259	4730-221-3902	ELBOW, PIPE TO TUBE: 1/8 IN. PIPE, 1/4 IN. TUBE (11568) M513		EA	1	1					C6	26
A 00260		ELBOW, PIPE TO TUBE: RELEASE VALVE TUBE (11568) Z513		EA	1	1						
0 00261	4730-142-1593	NUT, TUBE COUPLING: 1/4 IN. TUBE SIZE (11568) M27		EA	1	1					C6	31
X20 00262		MANIFOLD, AFTERCOOLER (11568) NR36-44		EA	1	1					C6	34
0 00263	4730-044-4617	PLUG, PIPE: AFTERCOOLER MANIFOLD, 1/4 in. (11568) M459		EA	1	1					C6	35
X20 00264		TUBE, AFTERCOOLER (11568) M825		EA	1	1					C5	28

(1) SMR CODE INDEX NO.	(2) FEDERAL STOCK NUMBER	(3) DESCRIPTION  REFERENCE NO. & MFR CODE  USABLE ON CODE		(4) UNIT OF ISSUE	(5) QTY INC IN UNIT PACK	(6) QTY INC IN UNIT	(7) 15 DAY ORGANIZATIONAL MAINTENANCE ALW				(8) ILLUS- TRATION	
							(a)	(b)	(c)	(d)	(a)	(b)
							1-5	6-20	21-50	51-100	FIG NO.	ITEM NO.
0 00265	4730-850-7971	INVERTED NUT, TUBE COUPLING (11568) SE5-41		EA	1	2					C5	26
0 00266	4730-851-6259	SLEEVE, COMPRESSION (11568) SE5-42		EA	1	2					C5	9
X20 00267		TUBE, AFTERCOOLER LOWER (11568) RE36-45		EA	1	1					C6	22
0 00268	4730-850-7971	INVERTED NUT, TUBE COUPLING (11568) SE5-41		EA	1	2					C6	23
0 00269	4730-851-6259	SLEEVE, COMPRESSION (11568) SE5-42		EA	1	2					C6	7
X20 00270		TUBE AFTERCOOLER UPPER (11568) RE36-46		EA	1	1					C6	9
0 00271	4730-850-7971	INVERTED NUT, TUBE COUPLING (11568) SE5-41		EA	1	2					C6	10
0 00272	4730-851-6259	SLEEVE, COMPRESSION (11568) SE5-42		EA	1	2					C6	11
X20 00273		TUBE, INTERCOOLER (11568) RE36-12A		EA	1	1					C6	24
0 00274	4730-850-7971	INVERTED NUT, TUBE COUPLING (11568) SE5-41		EA	1	8					C6	19
0 00275	4730-051-6259	SLEEVE, COMPRESSION (11568) SE5-42		EA	1	8					C6	18
X20 00276		TUBE RELEASE VALVE (11568) SB250B		EA	1	1					C6	8
00277		5014 - AIR RECEIVER										
X20 00278		COCK, DRAIN: AIR RECEIVER (11568) M629		EA	1	1					C5	20

(1) SMR CODE INDEX NO.	(2) FEDERAL STOCK NUMBER	(3) DESCRIPTION  REFERENCE NO. & MFR CODE  USABLE ON CODE		(4) UNIT OF ISSUE	(5) QTY INC IN UNIT PACK	(6) QTY INC IN UNIT	(7) 15 DAY ORGANIZATIONAL MAINTENANCE ALW				(8) ILLUS- TRATION	
							(a)	(b)	(c)	(d)	(a) FIG NO.	(b) ITEM NO.
							1-5	6-20	21-50	51-100		
0 00279	4730-279-0986	PLUG, PIPE: AIR RECEIVER, 2 IN. (11568) M569		EA	1	2					C5	22
0 00280	4730-278-3357	PLUG, PIPE: AIR RECEIVER, 3/4 IN. (11568) M459		EA	1	1					C5	24
00282		5015 - AIR DISCHARGE SYSTEM										
0 00283	4730-622-9402	BUSHING. REDUCING: VALVE TO HOSE, 3/4 IN., 1/2 IN. FEMALE (11586) M483		EA	1	1					C5	17
P 0 00284	4310-874-3179	HOSE ASSEMBLY, AIR (11568) Z538A		EA	1	1	*	*	*	*	C12	
X1 00285		COUPLING: AIR HOSE (72219) LL2-40		EA	1	1					C12	1
X1 00286		FERRULE, HOSE (53477) DD		EA	1	2					C12	4
X1 00287		HOSE, RUBBER: 50 FT. LG (53477) LL2-53		EA	1	1					C12	5
X1 00288		NUT, UNION: AIR HOSE (72219) LL2-39		EA	1	1					C12	2
X1 00289		STEM, HOSE (53477) LL2-59		EA	1	1					C12	3
X1 00290		STEM. HOSE (53477) LL2-45		EA	1	1					C12	6
0 00291	4730-618-2945	NIPPLE, PIPE: GLOBE VALVE, 3/4 IN. CLOSE (11568) M1034B		EA	1	1					C5	15
X20 00292	4820-822-5417	VALVE GLOBE: AIR LINE, 3/4 IN. (86107) 592-15									C5	16

(1) SMR CODE INDEX NO.	(2) FEDERAL STOCK NUMBER	(3) DESCRIPTION REF NO. & MFR CODE USABLE ON CODE		(4) UNIT OF ISSUE	(5) QTY INC IN UNIT PACK	(6) QTY INC IN UNIT	(7) 30-DAY DS MAINT ALLOWANCE			(8) 30-DAY GS MAINT ALLOWANCE			(9) 1-YR ALL PER 100 EQP CONTIN- GENY	(10) DEPT MAINT ALL PER 100 EQUIP	(11) ILLUS- TRATION	
							(a)	(b)	(c)	(a)	(b)	(c)			(a)	(b)
							1-20	21-50	51-100	1-20	21-50	51-100			FIG NO	ITEM NO
00001		SECTION IV - DS, GS, AND DEPOT MAINTENANCE REPAIR PARTS AND SPECIAL TOOLS LIST														
00003		GROUP 22 - BODY, CHASSIS OR HULL, AND ACCESSORY ITEMS														
00004		2210 -DATA PLATES AND INSTRUCTION HOLDERS														
X2F 00005		PLATE, IDENTIFICATION (11568) M739		EA	1	1										
F 00006	5305-253-5822	SCREW, DRIVE: IDENTIFICATION PLATE, No. 8, 5/16 IN. LG (11568) 8X5-16		EA	1	4										
00007		GROUP 40 - ELECTRIC MOTORS AND GENERATORS														
00008		4000 - MOTOR ASSEMBLY														
P F R 00009	6105-777-6761	MOTOR. ELECTRIC: 10 HP (36232) 10HP256UFR		EA	1	1	*	*	*	*	*	*	3	5	C5	6
F 00010	5310-017-4855	NUT PLAIN, HEXAGON: MOTOR MTG , 3/8-16 THD SIZE (11568) M909A		EA	1	4									C5	19
F 00011	5305-010-3341	SCREW, CAP, HEXAGON HEAD: MOTOR MTG, 3/8-16 THD SIZE, 1 1/4 IN. LG (11568) M456		EA	1	4									C5	8
F 00012	5310-595-6057	WASHER, FLAT: MOTOR MTG, 3/8 IN. SCREW SIZE (11568) SE5-88		EA	1	4									C5	7
F 00013	5310-010-3321	WASHER, LOCK: MOTOR MTG, 3/8 IN. SCREW SIZE (11568) M917A		EA	1	4									C5	18



(1) SMR CODE INDEX NO.	(2) FEDERAL STOCK NUMBER	(3) DESCRIPTION REF NO. & MFR CODE USABLE ON CODE		(4) UNIT OF ISSUE	(5) QTY INC IN UNIT PACK	(6) QTY INC IN UNIT	(7) 30-DAY DS MAINT ALLOWANCE			(8) 30-DAY GS MAINT ALLOWANCE			(9) 1-YR ALL PER 100 EQP CONTIN- GENCY	(10) DEPT MAINT ALL PER 100 EQUIP	(11) ILLUS- TRATION		
							(a)	(b)	(c)	(a)	(b)	(c)			(a)	(b)	
							1-20	21-50	51-100	1-20	21-50	51-100			FIG NO	ITEM NO	
00014		4001 - ROTOR ASSEMBLY															
P F 00015	3110-931-8639	BEARING: ROTOR SHAFT (36232) M9300-17		EA	1	2	*	*	*	*	*	2	10	15	C1	5	
X2F 00006		ROTOR: ELECTRIC MOTOR (36232) M7766-332		EA	1	1									C1	2	
X2F 00017		WASHER, THRUST: ROTOR BEARING (36232) T10877-5		EA	1	1									C1	4	
00018		4002 - STATOR ASSEMBLY															
X2F 00019		STATOR. ELECTRIC MOTOR (36232) M10826-3		EA	1	1									C1	13	
00020		4004 - VENTILATING SYSTEM															
X2F 00021		BAFFLE, AIR (36232) M9671-1		EA	1	2									C1	6	
00022		4005 - FRAME SUPPORT AND HOUSING															
F 00023	5306-431-0250	BOLT MACHINE: CARTRIDGE, 3/8-16 THD SIZE 7/8 IN. LG (36232) T11828-3		EA	1	6									C1	10	
X2F 00024		BRACKET END, COMMUTATOR END (36232) L3859-2		EA	1	1									C1	19	
X2F 00025		BRACKET, END, DRIVE END (36232) L3859-1		EA	1	1									C1	7	
X20 00026		CAP, FITTING: LUBRICATION (36232) T11684		EA	1	2									C1	8	

(1) SMR CODE INDEX NO.	(2) FEDERAL STOCK NUMBER	(3) DESCRIPTION REF NO. & MFR CODE USABLE ON CODE		(4) UNIT OF ISSUE	(5) QTY INC IN UNIT PACK	(6) QTY INC IN UNIT	(7) 30-DAY DS MAINT ALLOWANCE			(8) 30-DAY GS MAINT ALLOWANCE			(9) 1-YR ALL PER 100 EQP CONTIN- GENCY	(10) DEPT MAINT ALL PER 100 EQUIP	(11) ILLUS- TRATION	
							(a)	(b)	(c)	(a)	(b)	(c)			(a)	(b)
							1-20	21-50	51-100	1-20	21-50	51-100			FIG NO	ITEM NO
X2F 00027		CARTRIDGE, COMMUTATOR END (36232) L4000-5		EA	1	1									C1	21
X2F 00028		CARTRIDGE, DRIVE END (36232) L4000-6		EA	1	1									C1	3
0 00029	4730-010-4902	FITTING, LUBRICATION (36232) T11683-1		EA	1	2									C1	9
F 00030	5310-017-4855	NUT PLAIN, HEXAGON: THRU BOLT, 3/8-16 THD SIZE (00000) 174855		EA	1	4									C1	12
X2F 00031		SLINGER: ELECTRIC MOTOR (36232) S11044-3		EA	1	1									C1	11
X2F 00032		THRU BOLT: END BRACKET (36232) T11544-9		EA	1	4									C1	1
00033		4006 - STARTING AND PROTECTIVE DEVICES														
P 0 00034	6110-802-6785	HEATER, THERMAL RELEASE: 208v (23826) H42		EA	1	2	*	*	2	*	*	2	10	10	C3	5
P 0 00035	6110-802-6784	HEATER. THERMAL RELEASE: 416v (23826) H35		EA	1	2	*	*	2	*	*	2	10	10	C3	8
F 00036	5310-011-3739	NUT PAIN, HEXAGON: STARTER MTG, 1/4-20 THD SIZE (11568) M907A		EA	1	2										
F 00037	5305-988-1725	SCREW, MACHINE STARTER MTG 1/4-20 THD SIZE, 3/4 IN. LG (11568) M696		EA	1	2										
P F 00038	6110-891-4287	STARTER, MOTOR: MAGNETIC (23826) 14DA32BCX26		EA	1	1	*	*	*	*	*	*	3	3		
X1 00039		ARM ASSEMBLY, CROSS (23826) D50937-10		EA	1	1									C3	3
X1 00040		BOARD, ASSEMBLY, CONTACT (23826) D50912-13		EA	1	1									C3	1

(1) SMR CODE INDEX NO.	(2) FEDERAL STOCK NUMBER	(3) DESCRIPTION REF NO. & MFR CODE USABLE ON CODE		(4) UNIT OF ISSUE	(5) QTY INC IN UNIT PACK	(6) QTY INC IN UNIT	(7) 30-DAY DS MAINT ALLOWANCE			(8) 30-DAY GS MAINT ALLOWANCE			(9) 1-YR ALL PER 100 EQP CONTIN- GENCY	(10) DEPT MAINT ALL PER 100 EQUIP	(11) ILLUS- TRATION	
							(a)	(b)	(c)	(a)	(b)	(c)			(a)	(b)
							1-20	21-50	51-100	1-20	21-50	51-100			FIG NO	ITEM NO
X1 00041		MAGNET AND ARMATURE: MOTOR STARTER (23826) D16577-1		EA	1	1									C3	6
X1 00042		RELAY: THERAL OVERLOAD, QUICK TRIP (23826) 48DB12A		EA	1	1									C3	7
X1 00043	5945-910-4717	RELAY: THERMAL OVERLOAD, STANDARD (23826) 48DB11A		EA	1	1									C3	4
P F 00044	5930-501-0059	SWITCH, PRESSURE (23826) 69HA1-2H		EA	1	1	*	*	*	*	*	*	3	5	C2	
X1 00045		BAR, TOP (23826) D9935-1		EA	1	1									C2	4
X1 00046		BOARD, CONTACT (2386) D1673-1		EA	1	1									C2	1
X1 00047		COVER. ENCLOSURE (3826) D9943-10		EA	1	1									C2	7
X1 00048	5930-772-6081	DIAPHRAGM, ELECTRICAL (23826) D274-1		EA	1	1									C2	10
X1 00049		ENCLOSURE, DIAPHRAGM (23826) D7878-1		EA	1	1									C2	9
X1 00050	6110-80-0708	EQUALIZER: SPRING (23826) D276-1		EA	1	1									C2	2
X1 00051		FRAME SWITCH (23826) D9078-1		EA	1	1									C2	14
X1 00052	6110-805-2717	LEVER (23826) D1366-1		EA	1	1									C2	15
F 00053	5305-808-3109	SCREW: PRESSURE ADJUSTING (23826) D323-1		EA	1	1									C2	5
X1 00054		SCREW, DIFFERENTIAL (23826) D9096-1		EA	1	1									C2	6

(1) SMR CODE INDEX NO.	(2) FEDERAL STOCK NUMBER	(3) DESCRIPTION REF NO. & MFR CODE USABLE ON CODE		(4) UNIT OF ISSUE	(5) QTY INC IN UNIT PACK	(6) QTY INC IN UNIT	(7) 30-DAY DS MAINT ALLOWANCE			(8) 30-DAY GS MAINT ALLOWANCE			(9) 1-YR ALL PER 100 EQP CONTIN- GENCY	(10) DEPT MAINT ALL PER 100 EQUIP	(11) ILLUS- TRATION	
							(a)	(b)	(c)	(a)	(b)	(c)			(a)	(b)
							1-20	21-50	51-100	1-20	21-50	51-100			FIG NO	ITEM NO
X1 00055	5340-805-0825	SPRING: MAIN (23826) D10037-1		EA	1	1									C2	3
X1 00056	5930-530-4936	SPRING, HELICAL, COMPRESSION (23826) D467-1		EA	1	1									C2	8
X1 00057	5930-756-9452	SPRING, HELICAL, EXTENSION: TOGGLE (23826) D357-1		EA	1	1									C2	12
X1 00058	6110-887-5001	STIRRUP: DIAPHRAGM PLATE (23826) D10456-1		EA	1	1									C2	11
X1 00059	6110-887-5005	TOGGLE BAR (23826) D317-2		EA	1	1									C2	13
P F 00060	5930-241-8921	SWITCH, TOGGLE (73559) 2DA25-73		EA	1	1	*	*	*	*	*	*	5	5	C3	2
F 00061	5310-809-4058	WASHER, FLAT STARTER MTG, 1/4 IN. SCREW SIZE (11568) M905A		EA	1	4										
F 00062	5310-012-1753	WASHER, LOCK: STARTER MTG, 1/4 IN. SCREW SIZE (11568) M919A		EA	1	2										
00063		4009 - CONTROL PANELS, HOUSING, CUBICLES														
X2F 00064		BOX, CONDUIT (36232) L4370-2		EA	1	1									C1	19
X2F 00065		COVER, CONDUIT (36232) L4370-4		EA	1	1									C1	16
F 00066	5305-042-4335	SCREW, MACHINE: COVER MTG, No. 12-28 THD SIZE, 1/2 IN. LG (36232) S9225-21		EA	1	2									C1	17
F 00067	5305-016-9796	SCREW, SELF-TAPPING, THREAD FORMING: BOX MTG 1/4-20 THD SIZE, 5/8 IN. LG (36232) S9225-27		EA	1	2									C1	15
F 00068	5310-012-0391	WASHER, FLAT: BOX MTG, No. 12 SCREW SIZE (36232) T11135-5		EA	1	1									C1	14

(1) SMR CODE INDEX NO.	(2) FEDERAL STOCK NUMBER	(3) DESCRIPTION REF NO. & MFR CODE USABLE ON CODE		(4) UNIT OF ISSUE	(5) QTY INC IN UNIT PACK	(6) QTY INC IN UNIT	(7) 30-DAY DS MAINT ALLOWANCE			(8) 30-DAY GS MAINT ALLOWANCE			(9) 1-YR ALL PER 100 EQP CONTIN- GENY	(10) DEPT MAINT ALL PER 100 EQUIP	(11) ILLUS- TRATION	
							(a)	(b)	(c)	(a)	(b)	(c)			(a)	(b)
							1-20	21-50	51-100	1-20	21-50	51-100			FIG NO	ITEM NO
00069		GROUP 47 - GAGES, WEIGHING, AND MEASURING DEVICES														
00070		4702 - GAGES, MOUNTINGS, LINES AND FITTINGS														
P 0 00071	6685-264-3961	GAGE PRESSURE, DIAL: 0-300 LBS. (94894) 20-1000-2LXTS		EA	1	1	*	*	*	*	*	*	5	5	C5	21
P 0 00072	4910-030-2365	GAGE TIRE PRESSURE: INFLATOR (94894) G1506		EA	1	1	*	*	*	*	*	*	3	3	C4	
X1 00073		CHAIN LINK: HOSE TO GAGE, 11 IN. LG (94894) 1507		EA	1	2									C4	2
X1 00074		COUPLING: HOSE (94894) 61F1-715		EA	1	1									C4	7
X1 00075		GAGE TIRE PRESSURE (94894) STD506		EA	1	1									C4	4
X1 00076	6685-910-8359	GAGE PRESSURE JUMBO (94894) 1506		EA	1	1									C4	1
X1 00077		PLUG: GAGE END (94894) 729		EA	1	1									C4	8
X1 00078		PROBE, STANDARD (94894) 5004		EA	1	1									C4	6
X1 00079		PLUG: GAGE END (94894) 729		EA	1	1									C4	8
X1 00080		HOSE, WHIP (94894) 506-32		EA	1	1									C4	3
X1 00081		RING, KEY: CHAIN TO GAGE (94894) 1509		EA	1	2									C4	5
X1 00082		RING KEY: HOSE TO CHAIN (94894) 1508		EA	1	1									C4	9
P F 00083	6680-377-4915	WINDOW, OBSERVATION: OIL LEVEL (70925) B5093		EA	1	1	*	*	*	*	*	*	2	3	C7	29

(1) SMR CODE INDEX NO.	(2) FEDERAL STOCK NUMBER	(3) DESCRIPTION REF NO. & MFR CODE USABLE ON CODE		(4) UNIT OF ISSUE	(5) QTY INC IN UNIT PACK	(6) QTY INC IN UNIT	(7) 30-DAY DS MAINT ALLOWANCE			(8) 30-DAY GS MAINT ALLOWANCE			(9) 1-YR ALL PER 100 EQP CONTIN- GENCY	(10) DEPT MAINT ALL PER 100 EQUIP	(11) ILLUS- TRATION	
							(a)	(b)	(c)	(a)	(b)	(c)			(a)	(b)
							1-20	21-50	51-100	1-20	21-50	51-100			FIG NO	ITEM NO
00084		GROUP 50 - PNEUMATIC EQUIPMENT														
00085		5000 - AIR COMPRESSOR ASSEMBLY														
X2F R 00086		COMPRESSOR ASSEMBLY, AIR (11568) R30		EA	1	1									C5	2
F 00087	5310-017-4855	NUT PLAIN, HEXAGON: COMPRESSOR MTG, 3/8-16 THD SIZE (11568) M909A		EA	1	4									C5	19
F 00088	5305-010-3341	SCREW, CAP, HEXAGON HEAD: COMPRESSOR MTG, 3/8-16 THD SIZE, 1 1/4 IN. LG (11568) M456		EA	1	4									C5	8
F 00089	5310-595-6057	WASHER, FLAT: COMPRESSOR MTG, 3/8 IN. SCREW SIZE (11568) SE5-88		EA	1	4									C5	7
F 00090	5310-010-3321	WASHER, LOCK: COMPRESSOR MTG, 3/8 IN. SCREW SIZE (11568) M917A		EA	1	4									C5	18
00091		5001 - CRANKCASE, CYLINDER HEAD														
X1 00092		CRANKCASE, SUB BASE (11568) Z512		EA	1	1										
0 00093	4730-585-2816	ADAPTER, STRAIGHT, PIPE TO TUBE: 3/4 IN. PIPE SIZE 3/4 IN. TUBE SIZE (11568) RE10-99		EA	1	1									C7	24
F 00094	5306-562-6207	BOLT, MACHINE: HANDHOLE PLATE 5/16-18 THD SIZE, 1 1/2 IN. LG (11568) M567A		EA	1	12									C7	23
X2F 00095		CRANKCASE (11568) NR36-9A		EA	1	1									C7	42
X2F 00096		GASKET: HAND HOLE PLATE (11568) NR31A		EA	1	2									C7	26

(1) SMR CODE INDEX NO.	(2) FEDERAL STOCK NUMBER	(3) DESCRIPTION REF NO. & MFR CODE USABLE ON CODE		(4) UNIT OF ISSUE	(5) QTY INC IN UNIT PACK	(6) QTY INC IN UNIT	(7) 30-DAY DS MAINT ALLOWANCE			(8) 30-DAY GS MAINT ALLOWANCE			(9) 1-YR ALL PER 100 EQP CONTIN- GENCY	(10) DEPT MAINT ALL PER 100 EQUIP	(11) ILLUS- TRATION	
							(a)	(b)	(c)	(a)	(b)	(c)			(a)	(b)
							1-20	21-50	51-100	1-20	21-50	51-100			FIG NO	ITEM NO
X2F 00097		PLATE, HAND HOLE (11568) NR15A		EA	1	2									C7	25
X2F 00098		CYLINDER, COMPRESSION (11568) NR14-6A		EA	1	2									C6	20
X2F 00099		GASKET: CYLINDER (11568) NR29A		EA	1	2									C6	33
F 00100	5305-018-0148	SCREW, CAP, HEXAGON HEAD: CRANKCASE MTG, 7/16-20 THD SIZE, 1 3/8 IN. LG (11568) M817		EA	1	2									C7	19
F 00101	5305-018-0148	SCREW, CAP, HEXAGON HEAD: CYLINDER MTG, 7/16-20 THD SIZE, 1 3/8 IN. LG (11568) M817		EA	1	12									C6	32
X1 00102		SUB-BASE, COMPRESSOR (11568) NR36-11		EA	1	1									C6	25
X20 00103		VALVE ASSEMBLY, INTERSTAGE SAFETY (75336) 112C70		EA	1	1									C7	28
00104		5002 - CRANKSHAFT														
A 00105		BEARING ASSEMBLY, MAIN (11568) ZNR20-16 (CONSISTS OF 1 EACH 22520 AND 22584 TIMKEN BEARINGS)		EA	1	1										
P F 00106	3110-100-3543	CONE AND ROLLERS, TAPERED ROLLER BEARING (60038) 22584		EA	1	1	*	*	2	*	*	2	12	15	C7	38
P F 00107	3110-100-0544	CUP, TAPERED ROLLER BEARING (60038) 25520		EA	1	1	*	*	2	*	*	2	12	15	C7	37
A 00108		BEARING ASSEMBLY, MAIN (11568) ZNR36-16 (CONSISTS OF 1 EACH 2720 AND 2789 TIMKEN BEARINGS)		EA	1	1										
P F 00109	3110-100-3543	CONE AND ROLLERS, TAPERED ROLLER BEARING (60038) 2789		EA	1	1	*	*	2	*	*	2	12	15	C7	38

(1) SMR CODE INDEX NO.	(2) FEDERAL STOCK NUMBER	(3) DESCRIPTION REF NO. & MFR CODE USABLE ON CODE		(4) UNIT OF ISSUE	(5) QTY INC IN UNIT PACK	(6) QTY INC IN UNIT	(7) 30-DAY DS MAINT ALLOWANCE			(8) 30-DAY GS MAINT ALLOWANCE			(9) 1-YR ALL PER 100 EQP CONTIN- GENCY	(10) DEPT MAINT ALL PER 100 EQUIP	(11) ILLUS- TRATION	
							(a)	(b)	(c)	(a)	(b)	(c)			(a)	(b)
							1-20	21-50	51-100	1-20	21-50	51-100			FIG NO	ITEM NO
P F 00110	3110-100-0359	CUP, TAPERED ROLLER BEARING (60038) 2720		EA	1	1	*	*	2	*	*	2	12	15	C7	40
X2F 00111		CRANKSHAFT (11568) R30-5		EA	1	1									C7	39
P F 00112	5330-587-5892	SEAL, PLAIN, ENCASED: CRANKSHAFT (80201) 286W124		EA	1	1	*	*	2	*	*	2	12	15	C7	20
00113		5003 - FLYWHEEL ASSEMBLY														
F 00114	5306-157-2018	BOLT, MACHINE: FLYWHEEL 1/2-13 THD SIZE, 3 1/4 IN. LG (11568) RE20-105		EA	1	1									C7	18
X2F 00115		FLYWHEEL: COMPRESSOR DRIVE (11568) NR36-7		EA	1	1									C7	17
F 00116	5315-151-6172	KEY, MACHINE: FLYWHEEL, 3/8 IN. SQ, 3 IN. LG (11568) RE20-8		EA	1	1									C7	21
F 00117	5310-012-0378	NUT, PLAIN, HEXAGON: FLYWHEEL, 1/2-13 THD SIZE (11568) M465		EA	1	1									C7	22
00118		5004 - PISTONS, CONNECTING RODS														
X2F R 00119		PISTON AND CONNECTING ROD ASSEMBLY (11568) Z514		EA	1	2										
P F 00120	3110-293-8320	BEARING, PISTON PIN (60380) B1316		EA	1	4	*	2	2	*	2	2	20	20	C7	13
X2F 00121		BOLT. CONNECTING ROD (11568) RE10-20		EA	1	8									C7	14
X2F 00122		DIPPER, OIL (11568) R10-24		EA	1	4									C7	7
X2F 00123		PIN, PISTON (11568) R10-21		EA	1	4									C7	10



(1) SMR CODE INDEX NO.	(2) FEDERAL STOCK NUMBER	(3) DESCRIPTION REF NO. & MFR CODE USABLE ON CODE		(4) UNIT OF ISSUE	(5) QTY INC IN UNIT PACK	(6) QTY INC IN UNIT	(7) 30-DAY DS MAINT ALLOWANCE			(8) 30-DAY GS MAINT ALLOWANCE			(9) 1-YR ALL PER 100 EQP CONTIN- GENCY	(10) DEPT MAINT ALL PER 100 EQUIP	(11) ILLUS- TRATION	
							(a)	(b)	(c)	(a)	(b)	(c)			(a)	(b)
							1-20	21-50	51-100	1-20	21-50	51-100			FIG NO	ITEM NO
X2F 00124		PISTON, HIGH PRESSURE (11568) R10-4		EA	1	2									C7	12
X2F 00125		PISTON, LOW PRESSURE (11568) R15-4)		EA	1	2									C7	16
X2F 00126		RING, PISTON PIN (11568) R10-102		EA	1	8									C7	9
P F 00127	4310-649-8398	RING SET PISTON: HIGH PRESSURE (11568) Z189B		EA	1	2	*	2	2	*	2	2	20	20	C7	11
P F 00128	4310-649-8407	RING SET, PISTON: LOW PRESSURE (11568) Z179C		EA	1	2	*	2	2	*	2	2	20	20	C7	15
X2F 00129		ROD, CONNECTING (11568) R30-3		EA	1	4									C7	8
00130		5005 - VALVES														
P F 00131	4310-631-3396	VALVE ASSEMBLY, DISCHARGE: HIGH PRESSURE (11568) Z115		EA	1	2	*	*	2	*	*	2	12	10	C6	29
X1 00132	5330-239-1792	GASKET: VALVE (79150) 2165		EA	1	2									C8	1
X1 00133	5330-599-5888	GASKET: VALVE (79150) 2185		EA	1	2									C8	8
X2F 001314	4310-625-6753	HOUSING, HIGH PRESSURE: EXHAUST VALVE (11568) RE7-53A		EA	1	2									C8	9
F 00135	5305-952-0760	SCREW MACHINE: VALVE, No. 10-32 THD SIZE 3/8 IN. LG (11568) RE14-81		EA	1	2									C8	2
X2F 00136	4310-625-6752	SEAT, HIGH PRESSURE: EXHAUST VALVE (11568) RE7-57A		EA	1	2									C8	10
P F 00137	4310-616-4372	SPRING HELICAL, COMPRESSION: VALVE (11568) RE7-60		EA	1	2	*	*	2	*	*	2	10	10	C8	5
X2F 00138	5310-625-6755	WASHER, FLAT: VALVE DISC (11568) RE10-62		EA	1	2									C8	6

(1) SMR CODE INDEX NO.	(2) FEDERAL STOCK NUMBER	(3) DESCRIPTION REF NO. & MFR CODE USABLE ON CODE		(4) UNIT OF ISSUE	(5) QTY INC IN UNIT PACK	(6) QTY INC IN UNIT	(7) 30-DAY DS MAINT ALLOWANCE			(8) 30-DAY GS MAINT ALLOWANCE			(9) 1-YR ALL PER 100 EQP CONTIN- GENCY	(10) DEPT MAINT ALL PER 100 EQUIP	(11) ILLUS- TRATION	
							(a)	(b)	(c)	(a)	(b)	(c)			(a)	(b)
							1-20	21-50	51-100	1-20	21-50	51-100			FIG NO	ITEM NO
F 00139	5310-013-8479	WASHER, LOCK: VALVE, No. 10 SCREW SIZE (96906) MS35335-7		EA	1	2									C8	3
P F 00140	4310-631-3398	VALVE ASSEMBLY, DISCHARGE: LOW PRESSURE (11568) Z117		EA	1	2	*	*	2	*	*	2	12	10	C6	16
X1 00141	5330-252-6639	GASKET: VALVE (79150) 2237		EA	1	2									C8	16
X1 00142	5330-584-9011	GASKET: VALVE (79150) 4298		EA	1	2									C8	21
X2F 00143	4310-625-6759	HOUSING, LOW PRESSURE: EXHAUST VALVE (11568) RE10-51A		EA	1	2									C8	20
F 00144	5305-952-0760	SCREW, MACHINE: VALVE, No. 10-32 THD SIZE, 3/8 IN. LG (11568) RE14-81		EA	1	2									C8	2
X2F 00145		SEAT, EXHAUST VALVE (11568) RE10-65A		EA	1	2									C8	17
P F 00146	4310-619-0215	SPRING HELICAL, COMPRESSION: VALVE (11568) RE10-59		EA	1	2	*	*	*	*	*	2	10	10	C8	19
X2F 00147	5310-625-6758	WASHER, FLAT: VALVE DISC (11568) RE10-61		EA	1	1									C8	18
F 00148	5310-013-8479	WASHER, LOCK: VALVE, No. 10 SCREW SIZE (96906) MS35335-7		EA	1	2									C8	3
P F 00149	4310-631-3397	VALVE ASSEMBLY, INLET: HIGH PRESSURE (11568) Z113		EA	1	2	*	*	2	*	*	2	12	10	C6	21
X2F 00150		CAGE: INLET VALVE (11568) RE7-52A		EA	1	2									C8	7
X1 00151	5330-599-5888	GASKET: VALVE (79150) 2185		EA	1	2									C8	8
X1 00152	5330-239-1792	GASKET: VALVE (79150) 2165		EA	1	2									C8	1
F 00153	5305-952-0760	SCREW, MACHINE: VALVE, No. 10-32 THD SIZE, 3/8 IN. LG (11568) RE14-81		EA	1	2									C8	2

(1) SMR CODE INDEX NO.	(2) FEDERAL STOCK NUMBER	(3) DESCRIPTION REF NO. & MFR CODE USABLE ON CODE		(4) UNIT OF ISSUE	(5) QTY INC IN UNIT PACK	(6) QTY INC IN UNIT	(7) 30-DAY DS MAINT ALLOWANCE			(8) 30-DAY GS MAINT ALLOWANCE			(9) 1-YR ALL PER 100 EQP CONTIN- GENCY	(10) DEPT MAINT ALL PER 100 EQUIP	(11) ILLUS- TRATION	
							(a)	(b)	(c)	(a)	(b)	(c)			(a)	(b)
							1-20	21-50	51-100	1-20	21-50	51-100			FIG NO	ITEM NO
P F 00154	4310-625-6754	SEAT, HIGH PRESSURE: INLET VALVE (11568) RE7-56A		EA	1	2	*	*	*	*	*	2	10	10		
P F 00155	4131-616-4372	SPRING, HELICAL, COMPRESSION: VALVE (11566) RE7-60		EA	1	2	*	*	*	*	*	2	10	10	C8	5
X2F 00156	5310-625-6755	WASHER, FLAT VALVE DISC (11568) RE10-62		EA	1	2									C8	6
F 00157	5310-013-8479	WASHER, LOCK VALVE No. 10 SCREW SIZE (96906) MS35335-7		EA	1	2									C8	3
P F 00158	4310-631-3399	VALVE ASSEMBLY, INLET: LOW PRESSURE (11568) Z118		EA	1	2	*	*	2	*	*	2	12	10	C6	15
X1 00159	5330-584-8999	GASKET: VALVE (79150) 2325		EA	1	2									C8	15
X2 F 00160	4310-625-6762	HOUSING, LOW PRESSURE: INTAKE VALVE (11568) RE1472		EA	1	2									C8	11
F 00161	5305-952-0760	SCREW. MACHINE: VALVE No. 10-32 THD SIZE, 3/8 IN. LG (11568) RE14-81		EA	1	2									C8	2
P F 00162	4310-625-6760	SEAT, LOW PRESSURE: INTAKE VALVE (11568) RE14-71		EA	1	2	*	*	*	*	*	2	10	10	C8	11
P F 00163	4310-616-4374	SPRING, HELICAL, COMPRESSION: VALVE (11568) RE14-58		EA	1	2	*	*	*	*	*	2	10	10	C8	13
X2 F 00164	5310-625-6761	WASHER, FLAT: VALVE DISC (11568) RE 14-70		EA	1	2									C8	12
0 00165	5310-013-8479	WASHER, LOCK: VALVE, No. 10 SCREW SIZE (96906) MS35335-7		EA	1	2									C8	3
00166		5006 - LUBRICATION SYSTEM														
0 00167	4730-228-1619	CAP, PIPE: OIL DRAIN, 3/8 IN. (11568) M461		EA	1	1									C7	31
A 0 00168		COUPLING: BREATHER TUBE (11568) Z509		EA	1	2										

(1) SMR CODE INDEX NO.	(2) FEDERAL STOCK NUMBER	(3) DESCRIPTION REF NO. & MFR CODE USABLE ON CODE		(4) UNIT OF ISSUE	(5) QTY INC IN UNIT PACK	(6) QTY INC IN UNIT	(7) 30-DAY DS MAINT ALLOWANCE			(8) 30-DAY GS MAINT ALLOWANCE			(9) 1-YR ALL PER 100 EQP CONTIN- GENCY	(10) DEPT MAINT ALL PER 100 EQUIP	(11) ILLUS- TRATION	
							(a)	(b)	(c)	(a)	(b)	(c)			(a)	(b)
							1-20	21-50	51-100	1-20	21-50	51-100			FIG NO	ITEM NO
0 00169	4730-273-8561	ADAPTER, STRAIGHT, PIPE TO TUBE: 1/4 IN. PIPE, 3/8 IN. TUBE (11568) M509		EA	1	2									C6	4
0 00170	4730-287-1537	NUT TUBE COUPLING: 3/8 IN. TUBE SIZE (11568) NRS48		EA	1	2									C6	27
0 00171	4730-366-1994	NIPPLE, PIPE: OIL DRAIN, 3/8 IN. DIA, 8 IN. LG (11568) M10-37B		EA	1	1									C7	30
0 00172	4730-263-3122	PLUG, PIPE: OIL. 1/2 IN (11568) M484		EA	1	2									C7	27
0 00173	4730-263-3124	PLUG, PIPE: OIL FILL, 3/4 IN. (11568) M459		EA	1	1									C7	41
X20 00174		TUBE, BREATHER (11568) UB375B		EA	1	1									C6	3
00175		5007 - CRESSOR DRIVE														
P 0 00176	3030-618-1359	BELTS, V, MATCHED SET: 3 BELTS PER SET (80844) B81-3		EA	1	1	2	2	3	2	2	3	30	30	C5	1
X20 00177		GUARD ASSEMBLY, BELT (11568) Z290		EA	1	1									C10	
X20 00178		BRACKET: BELT GUARD (11568) Z290-1		EA	1	1									C10	6
X20 00179		BRACKET: BELT GUARD (11568) Z290-4		EA	1	1									C10	12
X20 00180		BRACKET: BELT GUARD (11568) Z290-3		EA	1	1									C10	7
X20 00181		BRACKET: BELT GUARD (11568) Z290-2		EA	1	1									C10	4
0 00182	5310-176-8141	NUT, PLAIN, HEXAGON: BELT GUARD BRACKET, 5/16-18 THD SIZE (96906) AN340-516		EA	1	8									C10	1

(1) SMR CODE INDEX NO.	(2) FEDERAL STOCK NUMBER	(3) DESCRIPTION REF NO. & MFR CODE USABLE ON CODE		(4) UNIT OF ISSUE	(5) QTY INC IN UNIT PACK	(6) QTY INC IN UNIT	(7) 30-DAY DS MAINT ALLOWANCE			(8) 30-DAY GS MAINT ALLOWANCE			(9) 1-YR ALL PER 100 EQP CONTIN- GENCY	(10) DEPT MAINT ALL PER 100 EQUIP	(11) ILLUS- TRATION	
							(a)	(b)	(c)	(a)	(b)	(c)			(a)	(b)
							1-20	21-50	51-100	1-20	21-50	51-100			FIG NO	ITEM NO
X280 00183		SHELL, BELT GUARD (11568) Z290-6		EA	1	1									C10	5
0 00184	5310-194-7307	WASHER, FLAT: BELT GUARD BRACKET, 5/16 IN. SCREW SIZE (96906) MS15795-12		EA	1	8									10	3
0 00185	5310-010-3320	WASHER, LOCK: BELT GUARD BRACKET, 5/16 IN. SCREW SIZE (96906) MS535338-7		EA	1	8									C10	2
F 00186	5315-217-6691	KEY, MACHINE: MOTOR PULLEY, 3/8 IN.SQ,3 IN. L (11568) M8776-8		EA	1	1									C5	5
O 00187	5310-011-3739	NUT, PLAIN, HEXAGON: BELT GUARD MTG, 1/4-20 THD SIZE (11568) M907A		EA	1	4									C10	3
X2F 00188		PULLEY, MOTOR (11568) 6-3-8x3VB		EA	1	1									C5	3
O 00189	5305-068-0502	SCREW, CAP, HEXAGON HEAD: BELT GUARD MTG, 1/4-20 THDO SIZE, 3/4 IN. LG (11568) M696		EA	1	4									C10	11
F 00190	5305-117-9218	SETSCREW: MOTOR PULLEY 3/8-16 THD SIZE, 3/8 IN. LG (11568) M568		EA	1	1									C5	4
O OO19	5310-809-4058	WASHER, FLAT: BELT GUARD MTG, 1/4 IN. SCREW SIZE (11568) M905A		EA	1	8									C10	10
O 00192	5310-012-1753	WASHER, LOCK: BELT GUARD MTG, 1/4 IN. SCREW SIZE (11568) M919A		EA	1	4									C10	9
00193		5008 - AIR INTAKE														
X20 00194		MANIFOLD, HIGH PRESSURE EXHAUST (11568) SE5-2B		EA	1	1									C8	28

(1) SMR CODE INDEX NO.	(2) FEDERAL STOCK NUMBER	(3) DESCRIPTION REF NO. & MFR CODE USABLE ON CODE		(4) UNIT OF ISSUE	(5) QTY INC IN UNIT PACK	(6) QTY INC IN UNIT	(7) 30-DAY DS MAINT ALLOWANCE			(8) 30-DAY GS MAINT ALLOWANCE			(9) 1-YR ALL PER 100 EQP CONTIN- GENCY	(10) DEPT MAINT ALL PER 100 EQUIP	(11) ILLUS- TRATION	
							(a)	(b)	(c)	(a)	(b)	(c)			(a)	(b)
							1-20	21-50	51-100	1-20	21-50	51-100			FIG NO	ITEM NO
X20 00195		MANIFOLD, HIGH PRESSURE, EXHAUST (11568) SE5-2A		EA	1	1									C6	14
X20 00196		MANIFOLD. HIGH PRESSURE INTAKE (11568) NR2B		EA	1	2									C6	2
X20 00197		MANIFOLD, LOW PRESSURE, EXHAUST (1156B) RE10-2E		EA	1	2									C6	17
X20 00198		MANIFOLD. LOW PRESSURE INTAKE, LEFT (11568) R10B2		EA	1	1									C6	5
X20 00199		MANIFOLD LOW PRESSURE INTAKE, RIGHT (11568) R30-2		EA	1	1									C6	13
X20 00200		MUFFLER ASSEMBLY, INTAKE (11568) Z66A		EA	1	2									C6	6
X20 00201	4310-993-4188	COVER, FILTER, LOWER (11568) M30		EA	1	2									C9	3
X20 00202		COVER, UPPER (11568) M31A		EA	1										C9	7
X20 00203		ELEMENT: BREATHER (11568) M673		EA	1	2									C9	6
O 00204	5310-042-6893	NUT, PLAIN, HEXAGON: COVER MTG, No. 10-32 THD SIZE (11568) AN340C10		EA	1	2									C9	1
X20 0205		PLATE: BREATHER (11568) M54C		EA	1	2									C9	2
X20 00206		SCREEN: BREATHER (11568) M674		EA	1	2									C9	5
Q 00207	5305-286-1960	SCREW, MACHINE: COVER MTG, No. 10-32 THD SIZE 5 7/16 IN. LG (96906) AN515C10-88		EA	1	2									C9	4
0 00208	5305-531-1781	SCREW, CAP, HEXAGON HEAD, MANIFOLD MTG. 3/8-16 THD SIZE 1 3/4 IN. LG (11568) -M944A		EA	1	16									C6	1

(1) SMR CODE INDEX NO.	(2) FEDERAL STOCK NUMBER	(3) DESCRIPTION REF NO. & MFR CODE USABLE ON CODE		(4) UNIT OF ISSUE	(5) QTY INC IN UNIT PACK	(6) QTY INC IN UNIT	(7) 30-DAY DS MAINT ALLOWANCE			(8) 30-DAY GS MAINT ALLOWANCE			(9) 1-YR ALL PER 100 EQP CONTIN- GENCY	(10) DEPT MAINT ALL PER 100 EQUIP	(11) ILLUS- TRATION	
							(a)	(b)	(c)	(a)	(b)	(c)			(a)	(b)
							1-20	21-50	51-100	1-20	21-50	51-100			FIG NO	ITEM NO
O 00209	5305-010-2765	SETScrew: MUFFLER MTG, 1/4--20 THD SIZE, 1/2 IN. LG (11568) M432		EA	1	2									C6	12
00210		5009 - UNLOADER SYSTEM COMPONENTS														
X2F 00211	4310-896-5984	MUFFLER ASSEMBLY: UNLOADER (11568) Z60A		EA	1	1										
X1 00212		BODY, BREATHER (11568) M1046		EA	1	1									C7	50
X1 00213		FELT BREATHER (11568) M97A		EA	1	1									C7	51
X1 00214		SCREEN, BREATHER (11568) M98A		EA	1	1									C7	52
X2F 00215		COVER, GOVERNOR (11568) SE30-100		EA	1	1									C7	49
O 00216	4730-193-7080	ELBOW, PIPE: CHECK VALVE, 3/4 IN DIA, MALE AND FEMALE ENDS (11568) SE5-19		EA	1	2									C5	14
O 00217	4730-249-3900	ELBOW, PIPE: CHECK VALVE, 1/2 IN. MALE END, 3/4 IN. FEMALE END (11568) M932B		EA	1	1									C5	11
P F 00218	4310-584-9005	GASKET: GOVERNOR COVER (11568) SE30-89		EA	1	1	*	*	*	*	*	2	6	10	C7	33
P F 00219	4310-633-6113	GASKET SET: GOVERNOR HOUSING (11568) Z30-30		EA	1	1	*	*	2	*	2	2	12	25		
X1 00220	4310-584-9012	GASKET: GOVERNOR HOUSING, .03125 IN. THK (AS REQUIRED) (11568) SE30-30		EA	1	1									C7	36
X1 00220		GASKET: GOVERNOR HOUSING, .03125 IN. THK, .005 IN. THK (AS REQUIRED) (11568) SE30-30A		EA	1	1									C7	36

(1) SMR CODE INDEX NO.	(2) FEDERAL STOCK NUMBER	(3) DESCRIPTION REF NO. & MFR CODE USABLE ON CODE		(4) UNIT OF ISSUE	(5) QTY INC IN UNIT PACK	(6) QTY INC IN UNIT	(7) 30-DAY DS MAINT ALLOWANCE			(8) 30-DAY GS MAINT ALLOWANCE			(9) 1-YR ALL PER 100 EQP CONTIN- GENCY	(10) DEPT MAINT ALL PER 100 EQUIP	(11) ILLUS- TRATION	
							(a)	(b)	(c)	(a)	(b)	(c)			(a)	(b)
							1-20	21-50	51-100	1-20	21-50	51-100			FIG NO	ITEM NO
X1 00222		GASKET GOVERNOR HOUSING, .010 IN. THK (AS REQUIRED) (11568) SE30-30B		EA	1	1									C7	36
X1 00223		GASKET: GOVERNOR HOUSING, .015 IN. THK (AS REQUIRED) (11568) SE30-30C		EA	1	1									C7	36
X2F 00224	4310-884-4582	GUIDE SPRING: GOVERNOR (11568) SE5-87		EA	1	1									C7	46
X2F 00225		HOUSING, GOVERNOR (11568) NR36-113		EA	1	1									C7	35
P F 00226	4310-773-8005	KIT, RELEASE VALVE (11568) Z125		EA	1	1	*	*	2	*	2	2	12	15		
X2F 00227	3110-100-6212	BALL, BEARING: RELEASE VALVE (11568) SE5-95		EA	1	1									C7	3
X1 00228	4310-625-6748	SLEEVE, PLUNGER (11568) SE5-97		EA	1	1									C7	6
X1 00229	4310-625-6749	BODY, RELEASE VALVE (11568) SE30-101		EA	1	1									C7	4
X1 00230		CAP, RELEASE VALVE (11568) SE5-85		EA	1	1									C7	1
X1 00231	5330-298-5330	GASKET: RELEASE VALVE BODY (11568) H122		EA	.1	1									C7	5
X1 00232	4310-625-6747	PLUNGER, RELEASE VALVE (11568) SE5-86B		EA	1	1									C7	54
X1 00233	4310-616-4373	SPRING, HELICAL, COMPRESSION: RELEASE VALVE (11568) SE5-91		EA	1	1									C7	2
0 00234	4730-021-9668	NIPPLE, PIPE: CHECK VALVE, 3/4 IN. DIA, 8 IN. LG (11568) M1024B		EA	1	1									C5	13
X2F 00235		PIN, GOVERNOR WEIGHT (11568) SE5-92A		EA	1	2									C7	56



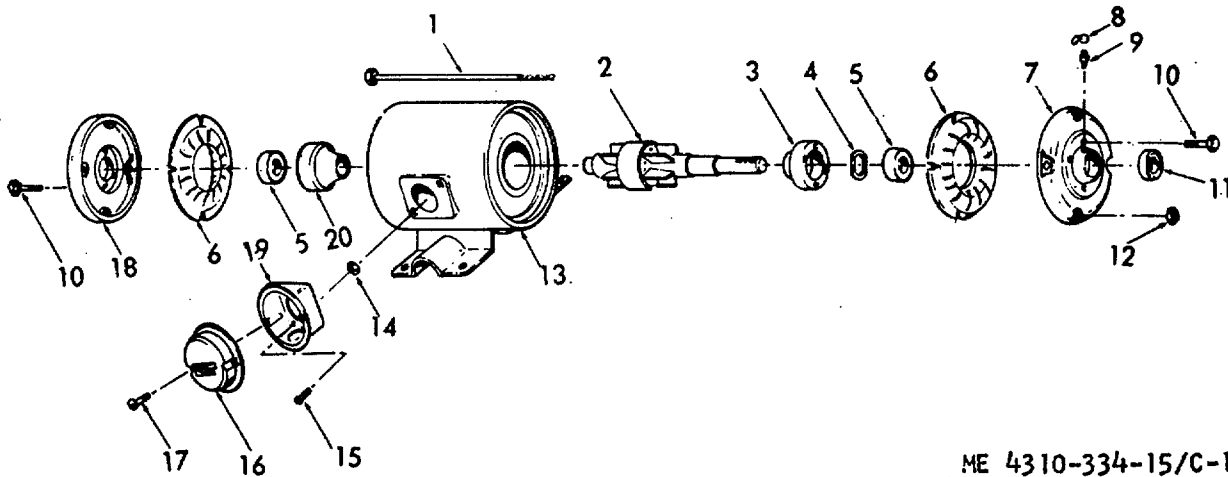
(1) SMR CODE INDEX NO.	(2) FEDERAL STOCK NUMBER	(3) DESCRIPTION REF NO. & MFR CODE USABLE ON CODE		(4) UNIT OF ISSUE	(5) QTY INC IN UNIT PACK	(6) QTY INC IN UNIT	(7) 30-DAY DS MAINT ALLOWANCE			(8) 30-DAY GS MAINT ALLOWANCE			(9) 1-YR ALL PER 100 EQP CONTIN- GENCY	(10) DEPT MAINT ALL PER 100 EQUIP	(11) ILLUS- TRATION	
							(a)	(b)	(c)	(a)	(b)	(c)			(a)	(b)
							1-20	21-50	51-100	1-20	21-50	51-100			FIG NO	ITEM NO
X2F 00236		PLATE, BAFFLE (11568) NR36-104		EA	1	1									C7	34
0 00237	4730-044-4617	PLUG, PIPE: CHECK VALVE 1/4 IN. DIA (11568) M484		EA	1	1									C5	10
F 00238	5305-710-4192	SCREW, CAP, HEXAGON HEAD: GOVERNOR HOUSING MTG, 7/16-14 THD SIZE, 1 3/8 IN. LG (11568) RE20-106		EA	1	4									C7	32
F 00239	5305-018-0147	SCREW CAP. HEXAGON HEAD: SPINDLE MTG, 7/16-14: THD SIZE 1 1/4 IN. LG (11568) RE14-94		EA	1	1									C7	43
F 00240	5305-263-9874	SCREW, MACHINE: GOVERNOR COVER, No. 10-32 THD SIZE, 5/8 IN. LG (11568) SE14-84		EA	1	8									C7	53
XF2 00241	2990-863-0926	SPINDLE, GOVERNOR WEIGHT (11568) SE5-83B		EA	1	1									C7	57
X2F 00212	4310-896-2104	SPRING, HELICAL, COMPRESSION: GOVERNOR BUMPER (11568) H110P		EA	1	2									C7	47
X2F 00243	4310-850-5541	SPRING, HELICAL, COMPRESSION: MAIN GOVERNOR (11568) SE5-9C		EA	1	1									C7	45
X20 00244		VALVE, CHECK (11568) ZR44		EA	1	1									C5	12
X1 00245		BODY, VALVE (11568) R10-448		EA	1	1									C11	1
X20 00246	5330-5841-9010	GASKET: CHECK VALVE (11568) RE10-66		EA	1	1									C11	4
X20 00247		PACKING, PREFORMED: CHECK VALVE PLUG (11568) OR218		EA	1	1									C11	2
X20 00248		PLUG: CHECK VALVE (11568) M806		EA	1	1									C11	5
X20 00249		VALVE ASSEMBLY, AIR: CHECK VALVE (11568) Z114		EA	1	1									C11	3

(1) SMR CODE INDEX NO.	(2) FEDERAL STOCK NUMBER	(3) DESCRIPTION  REF NO. & MFR CODE  USABLE ON CODE		(4) UNIT OF ISSUE	(5) QTY INC IN UNIT PACK	(6) QTY INC IN UNIT	(7) 30-DAY DS MAINT ALLOWANCE			(8) 30-DAY GS MAINT ALLOWANCE			(9) 1-YR ALL PER 100 EQP CONTIN- GENCY	(10) DEPT MAINT ALL PER 100 EQUIP	(11) ILLUS- TRATION	
							(a)	(b)	(c)	(a)	(b)	(c)			(a)	(b)
							1-20	21-50	51-100	1-20	21-50	51-100			FIG NO	ITEM NO
P0 00250	4820-287-4084	VALVE, SAFETY RELIEF (75336) 112		EA	1	1	*	*	2	*	*	2	10	10	C5	25
F 00251	5310-595-6057	WASHER, FLAT: GOVERNOR, 3/8 IN. SCREW SIZE (11568) SE5-88		EA	1	1									C7	44
F 00252	5310-010-3322	WASHER, LOCK: SPINDLE MTG, 7/16 IN. SCREW SIZE (11568) M466		EA	1	1									C7	55
X2F 00253	4310-896-2105	WEIGHT, GOVERNOR (11568) SE5-82		EA	1	2									C7	48
00254		5010 - COMPRESSOR COOLING AND HEATING														
0 00255	4730-585-2816	ADAPTER, STRAIGHT, PIPE TO TUBE: ARTERCOOLER TUBE, 3/4 IN. PIPE, 3/4 IN. TUBE (11568) RE10-99		EA	1	1									C5	27
A 00256		COUPLING: RELEASE VALVE TUBE (11568) Z441		EA	1	1										
0 00257	4730-222-3902	COUPLING, STRAIGHT PIPE TO TUBE: 1/8 IN. PIPE, 1/4 IN. TUBE (11568) M441		EA	1	1									C6	30
0 00258	4730-142-1593	NUT, TUBE COUPLING: 1/4 IN. TUBE SIZE (11568) M27		EA	1	1									C6	31
0 00259	4730-21-3902	ELBOW, PIPE TO TUBE: 1/8 IN. PIPE, 1/4 IN. TUBE (11568) M513		EA	1	1									C6	26
A 00260		ELBOW, PIPE TO TUBE: RELEASE VALVE TUBE (11568) Z513		EA	1	1										
0 00261	4730-142-1593	NUT, TUBE COUPLING: 1/4 IN. TUBE SIZE (11568) M27		EA	1	1									C6	31
X20 00262		MANIFOLD, AFTERCOOLER (11568) NR36-44		EA	1	1									C6	34

(1) SMR CODE INDEX NO.	(2) FEDERAL STOCK NUMBER	(3) DESCRIPTION REF NO. & MFR CODE USABLE ON CODE		(4) UNIT OF ISSUE	(5) QTY INC IN UNIT PACK	(6) QTY INC IN UNIT	(7) 30-DAY DS MAINT ALLOWANCE			(8) 30-DAY GS MAINT ALLOWANCE			(9) 1-YR ALL PER 100 EQP CONTIN- GENCY	(10) DEPT MAINT ALL PER 100 EQUIP	(11) ILLUS- TRATION		
							(a)	(b)	(c)	(a)	(b)	(c)			(a)	(b)	
							1-20	21-50	51-100	1-20	21-50	51-100			FIG NO	ITEM NO	
0 00263 X20 00264 0 00265 0 00266 X20 00267 0 00268 0 00269 X20 00270	4730-044-4617	PLUG, PIPE: AFTERCOOLER MANIFOLD, 1/4 IN. (11568) M459		EA	1	1										C6	35
		TUBE, AFTERCOOLER (11568) M825		EA	1	1										C5	28
	4730-850-7971	INVERTED NUT, TUBE COUPLING (11568) SE5-41		EA	1	2										C5	26
	4730-851-6259	SLEEVE , COMPRESSION (11568) SE5-42		EA	1	2										C5	9
		TUBE, AFTERCOOLER, LOWER (11568) RE36-45		EA	1	1										C6	22
	4730-850-7971	INVERTED NUT, TUBE COUPLING (11568) SE5-41		EA	1	2										C6	23
	4730-851-6259	SLEEVE, COMPRESSION (11568) SE5-42		EA	1	2										C6	7
		TUBE, AFTERCOOLER UPPER (11568) RE36-46		EA	1	1										C6	9
	4730-850-7971	INVERTED NUT, TUBE COUPLING (11568) SE5-41		EA	1	2										C6	10
	4730-851-6259	SLEEVE, COMPRESSION (11568) SE5-42		EA	1	2										C6	11
		TUBE, INTERCOOLER (11568) RE36-12A		EA	1	4										C6	24
	4730-850-7971	INVERTED NUT, TUBE COUPLING (11568) SE5-41		EA	1	8										C6	19
	4730-051-6259	SLEEVE, CCOMPRESSION (11568) SE5-42		EA	1	8										C6	18
		TUBE, RELEASE VALVE (11568) SB250B		EA	1	1										C6	8

(1) SMR CODE INDEX NO.	(2) FEDERAL STOCK NUMBER	(3) DESCRIPTION REF NO. & MFR CODE USABLE ON CODE		(4) UNIT OF ISSUE	(5) QTY INC IN UNIT PACK	(6) QTY INC IN UNIT	(7) 30-DAY DS MAINT ALLOWANCE			(8) 30-DAY GS MAINT ALLOWANCE			(9) 1-YR ALL PER 100 EQP CONTIN- GENCY	(10) DEPT MAINT ALL PER 100 EQUIP	(11) ILLUS- TRATION	
							(a)	(b)	(c)	(a)	(b)	(c)			(a)	(b)
							1-20	21-50	51-100	1-20	21-50	51-100			FIG NO	ITEM NO
00277		5014 - AIR RECEIVER														
X20 00278		COCK, DRAIN: AIR RECEIVER (11568) M629		EA	1	1									C5	20
0 00279	4730-279-0986	PLUG, PIPE: AIR RECEIVER, 2 IN. (11568) M569		EA	1	2									C5	22
0 00280	4730-278-3357	PLUG, PIPE: AIR RECEIVER 3/4 IN. (11568) M459		EA	1	1									C5	24
X2F 00281		RECEIVER AIR (11568) P14000-OSA		EA	1	1									C5	23
00282		5015 - AIR DISCHARGE SYSTEM														
0 00283	4730-622-9402	BUSHING, REDUCING: VALVE TO HOSE, 3/4 IN., 1 1/2 IN. FEMA LE (11568) M483		EA	1	1									C5	17
P0 00284	4310-874-3179	HOSE ASSEMBLY, AIR (11568) Z538A		EA	1	1	*	*	*	*	*	2	6	10	C12	
X1 00285		COUPLING: AIR HOSE (72219) LL2-40		EA	1	1									C12	1
X1 00286		FERRULE, HOSE (53477) DD		EA	1	2									C12	4
X1 00287		HOSE, RUBBER: 50 FT. LG (53477) LL2-53		EA	1	1									C12	5
X1 00288		NUT, UNION: AIR HOSE (72219) LL2-39		EA	1	1									C12	2
X1 00289		STEM, HOSE (53477) LL2-59		EA	1	1									C12	3
X1 00290		STEM, HOSE (53477) LL2-45		EA	1	1									C12	6'

(1) SMR CODE INDEX NO.	(2) FEDERAL STOCK NUMBER	(3) DESCRIPTION REF NO. & MFR CODE USABLE ON CODE		(4) UNIT OF ISSUE	(5) QTY INC IN UNIT PACK	(6) QTY INC IN UNIT	(7) 30-DAY DS MAINT ALLOWANCE			(8) 30-DAY GS MAINT ALLOWANCE			(9) 1-YR ALL PER 100 EQP CONTIN- GENCY	(10) DEPT MAINT ALL PER 100 EQUIP	(11) ILLUS- TRATION	
							(a)	(b)	(c)	(a)	(b)	(c)			(a)	(b)
							1-20	21-50	51-100	1-20	21-50	51-100			FIG NO	ITEM NO
0 00291	4730-618-2945	NIPPLE, PIPE: GLOBE VALVE, 3/4 IN. CLOSE (11568) M1034B		EA	1	1									C5	15
X20 00292	4820-822-5417	VALVE, GLOBE: AIR LINE, 3/4 IN. (86107) 592-15													C5	16

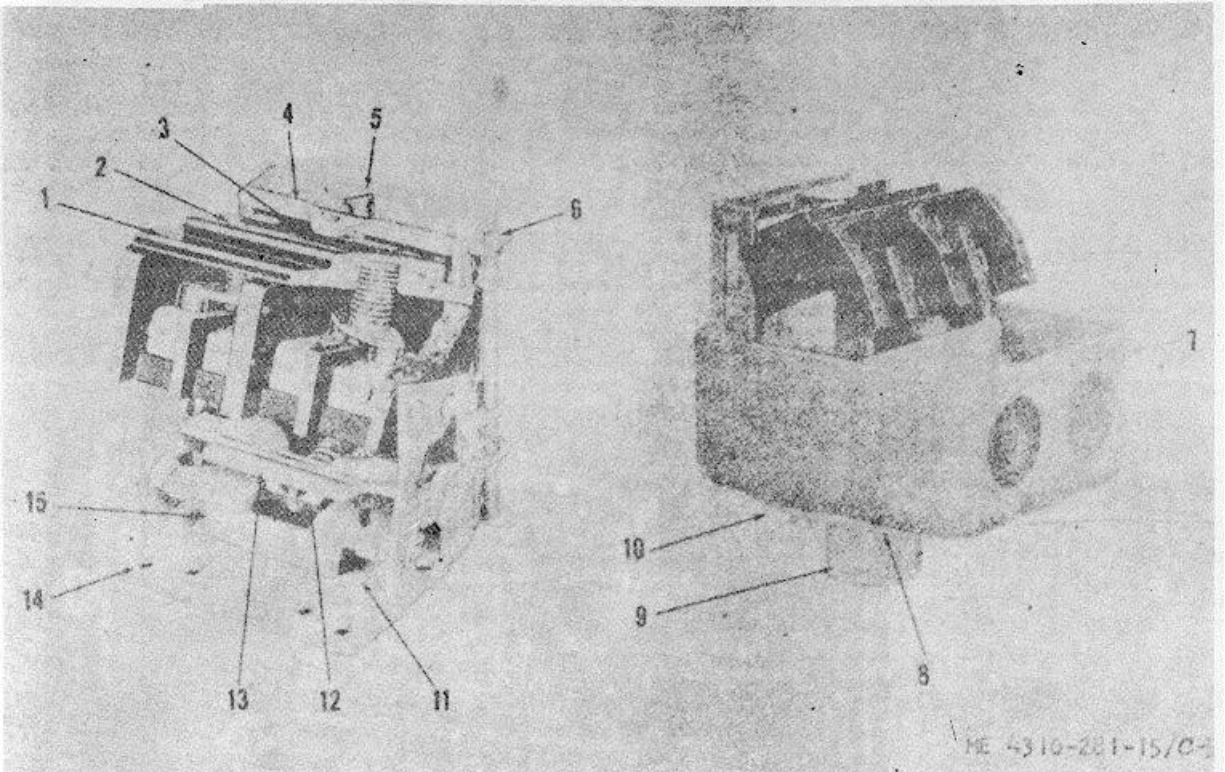


ME 4310-334-15/C-1

LEGEND TO PARTS, FIGURE C-1

ITEM NO.	FUNCT GROUP	ITEM NAME	ITEM NO.	FUNCT GROUP	ITEM NAME
1	4005	THRU BOLT	11	4005	SLINGER
2	4001	ROTOR	12	4005	NUT
3	4005	CARTRIDGE	13	4002	STATOR
4	4001	WASHER	14	4009	WASHER
5	4001	BEARING	15	4009	SCREW
6	4004	BAFFLE	16	4009	COVER
7	4005	BRACKET	17	4009	SCREW
8	4005	CAP	18	4005	BRACKET
9	4005	FITTING	19	4009	BOX
10	4005	BOLT	20	4005	CARTRIDGE

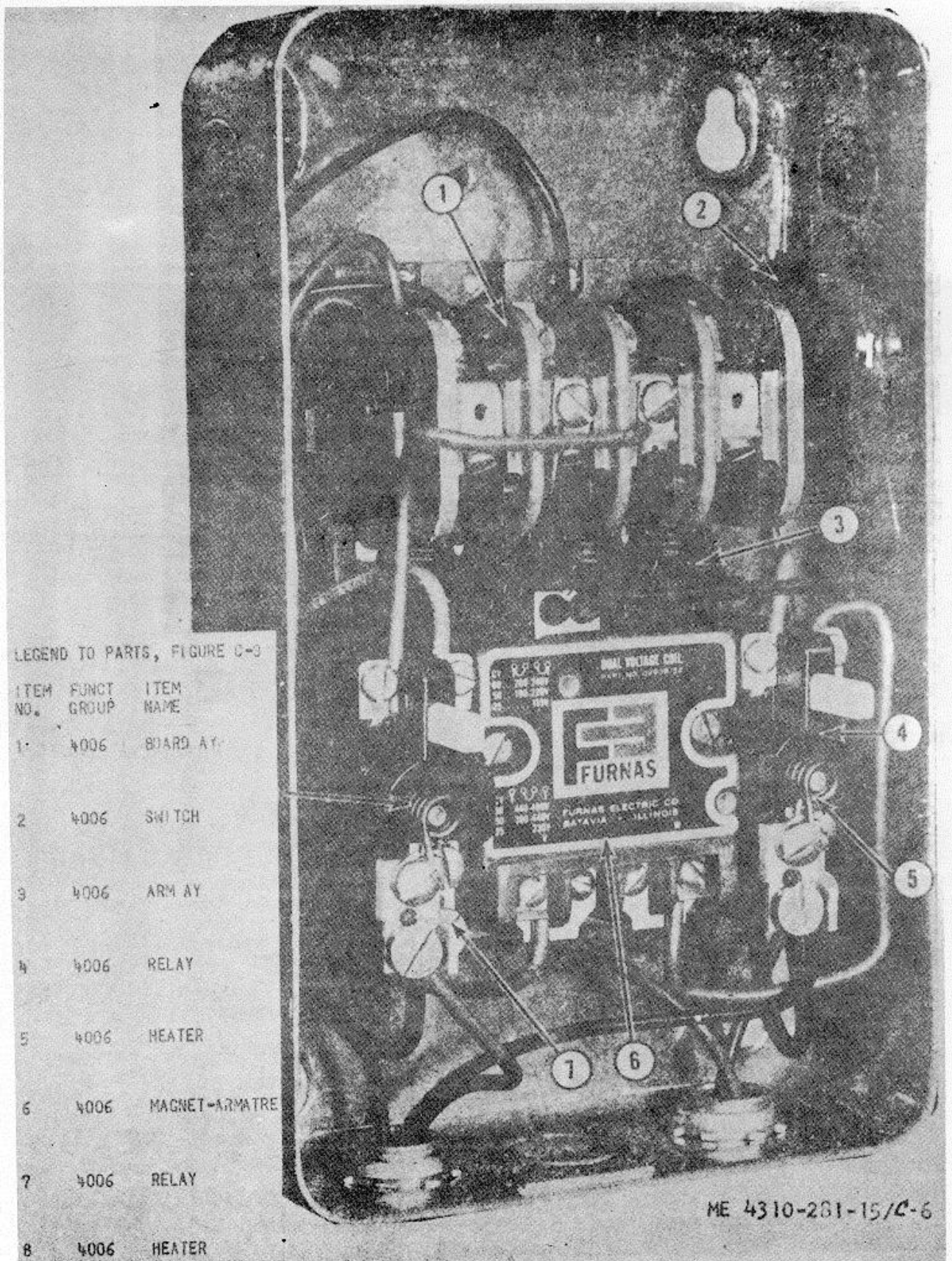
Figure No. C-1 Electric Motor



LEGEND TO PARTS, FIGURE C-2

ITEM NO.	FUNCT GROUP	ITEM NAME	ITEM NO.	FUNCT GROUP	ITEM NAME
1	4006	BOARD	9	4006	DIAPHRAGM
2	4006	EQUALIZER	10	4006	DIAPHRAGM
3	4006	SPRING	11	4006	STIRRUP
4	4006	BAR	12	4006	SPRING
5	4006	SCREW	13	4006	TOGGLE BAR
6	4006	SCREW	14	4006	LEVER
7	4006	COVER	15	4006	FRAME
8	4006	SPRING			

Figure No. C-2 Pressure Switch



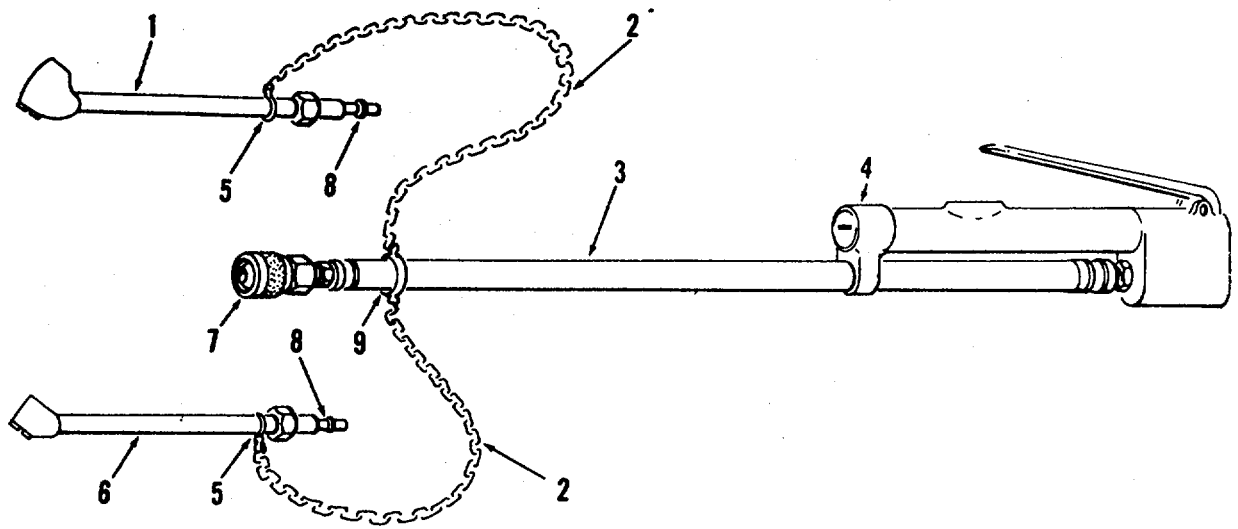
LEGEND TO PARTS, FIGURE C-3

ITEM NO.	FUNCT GROUP	ITEM NAME
1	4006	BOARD AY
2	4006	SWITCH
3	4006	ARM AY
4	4006	RELAY
5	4006	HEATER
6	4006	MAGNET-ARMATRE
7	4006	RELAY
8	4006	HEATER

ME 4310-281-15/C-6

Figure No. C-3 Starter Switch



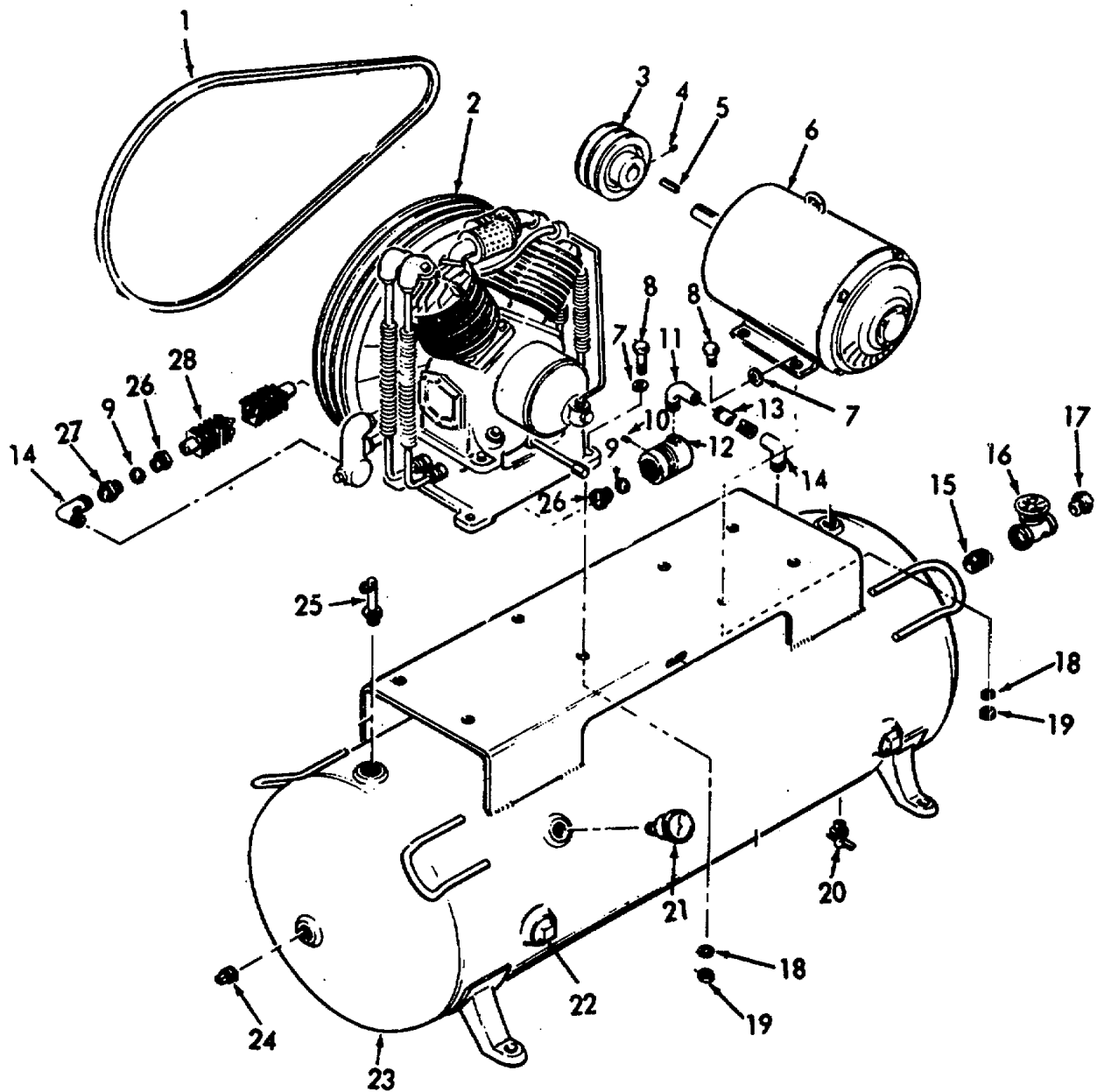


ME 4310-281-15/C 2

LEGEND TO PARTS, FIGURE C-4

ITEM NO.	FUNCT GROUP	ITEM NAME
1	4702	GAGE
2	4702	CHAIN
3	4702	HOSE
4	4702	GAGE
5	4702	RING
6	4702	GAGE
7	4702	COUPLING
8	4702	PLUG
9	4702	RING

Figure No. C-4 Inflator Gage

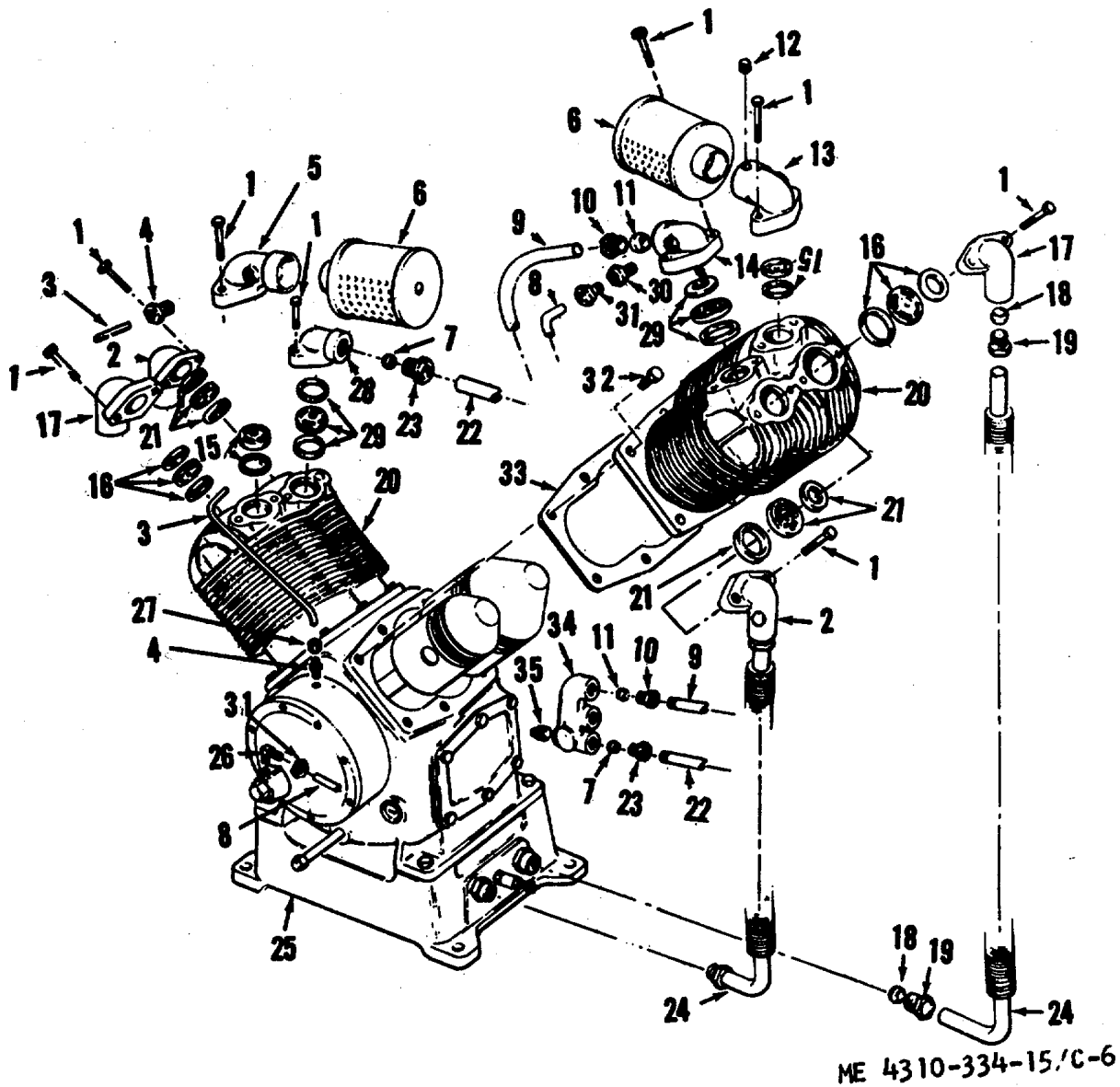


ME 4310-334-15/C-5

LEGEND TO PARTS, FIGURE C-5

ITEM NO.	FUNCT GROUP	ITEM NAME	ITEM NO.	FUNCT GROUP	ITEM NAME	ITEM NO.	FUNCT GROUP	ITEM NAME
1	5007	BELTS	10	5009	PLUG	19	5000	NUT
2	5000	COMPRESSOR	11	5009	ELBOW	20	5014	COCK
3	5007	PULLEY	12	5009	VALVE	21	4732	GAGE
4	5007	SETSCREW	13	5009	NIPPLE	22	5014	PLUG
5	5007	KEY	14	5009	ELBOW	23	5014	RECEIVER
6	4000	MOTOR	15	5015	NIPPLE	24	5014	PLUG
7	4000	WASHER	16	5015	VALVE	25	5009	VALVE
8	5000	WASHER	17	5015	BUSHING	26	5010	INVERTED NUT
9	5010	SLEEVE	18	4000	WASHER	27	5010	ADAPTER
			18	5000	WASHER	28	5010	TUBE
			19	4000	NUT			

Figure No. C-5 Compressor, Motor And Air Receiver



LEGEND TO PARTS, FIGURE C-6

ITEM NO.	FUNCT GROUP	ITEM NAME	ITEM NO.	FUNCT GROUP	ITEM NAME	ITEM NO.	FUNCT GROUP	ITEM NAME
1	5008	SCREW	13	5008	MANIFOLD	25	5001	SUB-BASE
2	5008	MANIFOLD	14	5008	MANIFOLD	26	5010	ELBOW
3	5006	TUBE	15	5005	VALVE AY	27	5006	NUT
4	5006	ADAPTER	16	5005	VALVE AY	28	5008	MANIFOLD
5	5008	MANIFOLD	17	5008	MANIFOLD	29	5005	VALVE AY
6	5008	MUFFLER AY	18	5010	SLEEVE	30	5010	COUPLING
7	5010	SLEEVE	19	5010	INVERTED NUT	31	5010	INVERTED NUT
8	5010	TUBE	20	5001	CYLINDER	32	5001	SCREW
9	5010	TUBE	21	5005	VALVE AY	33	5001	GASKET
10	5010	INVERTED NUT	22	5010	TUBE	34	5010	MANIFOLD
11	5010	SLEEVE	23	5010	INVERTED NUT	35	5010	PLUG
12	5008	SETScrew	24	5010	TUBE			

Figure No. C-6 Compressor Lines And Cylinder

LEGEND TO PARTS, FIGURE C-7

ITEM NO.	FUNCT GROUP	ITEM NAME	ITEM NO.	FUNCT GROUP	ITEM NAME	ITEM NO.	FUNCT GROUP	ITEM NAME
1	5009	CAP	20	5002	SEAL	39	5002	CRANKSHAFT
2	5009	SPRING	21	5003	KEY	40	5002	CUP
3	5009	BALL	22	5003	NUT	41	5006	PLUG
4	5009	BODY	23	5001	BOLT	42	5001	CRANKCASE
5	5009	GASKET	24	5001	ADAPTER	43	5009	SCREW
6	5009	BEARING	25	5001	PLATE	44	5009	WASHER
7	5004	DIPPER	26	5001	GASKET	45	5009	SPRING
8	5004	ROD	27	5006	PLUG	46	5009	GUIDE
9	5004	RING	28	5001	VALVE AY	47	5009	SPRING
10	5004	PIN	29	4702	WINDOW	48	5009	WEIGHT
11	5004	RING SET	30	5006	NIPPLE	49	5009	COVER
12	5004	PISTON	31	5006	CAP	50	5009	BODY
13	5004	BEARING	32	5009	SCREW	51	5009	FELT
14	5004	BOLT	33	5009	GASKET	52	5009	SCREEN
15	5004	RING SET	34	5009	PLATE	53	5009	SCREW
16	5004	PISTON	35	5009	HOUSING	54	5009	PLUNGER
17	5003	FLYWHEEL	36	5009	GASKET	55	5009	WASHER
18	5003	BOLT	37	5002	CUP	56	5009	PIN
19	5001	SCREW	38	5002	CONE-ROLLERS	57	5009	SPINDLE

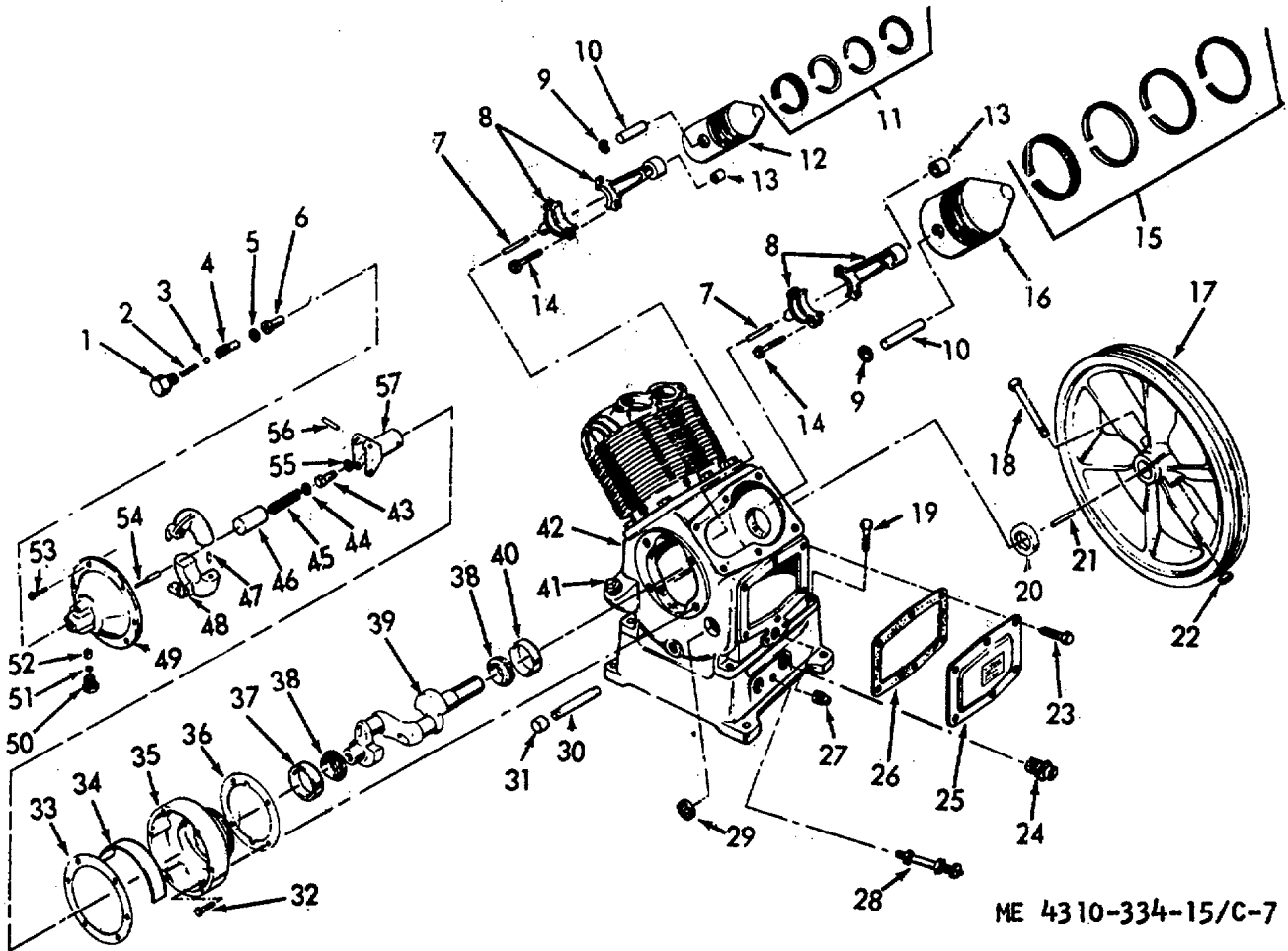
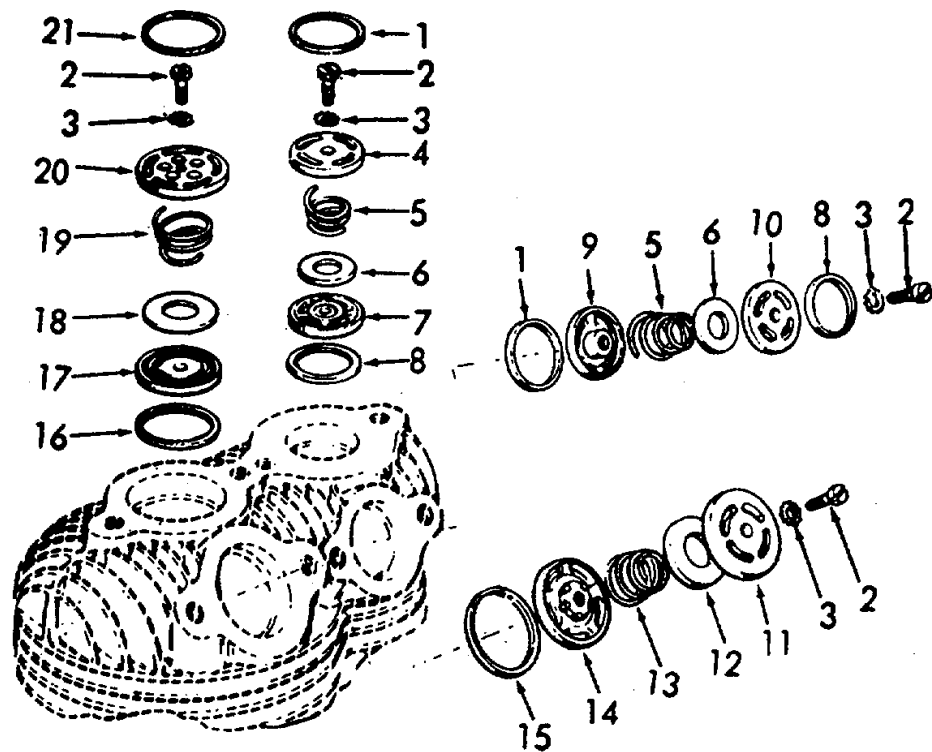


Figure No. C-7 Compressor Components

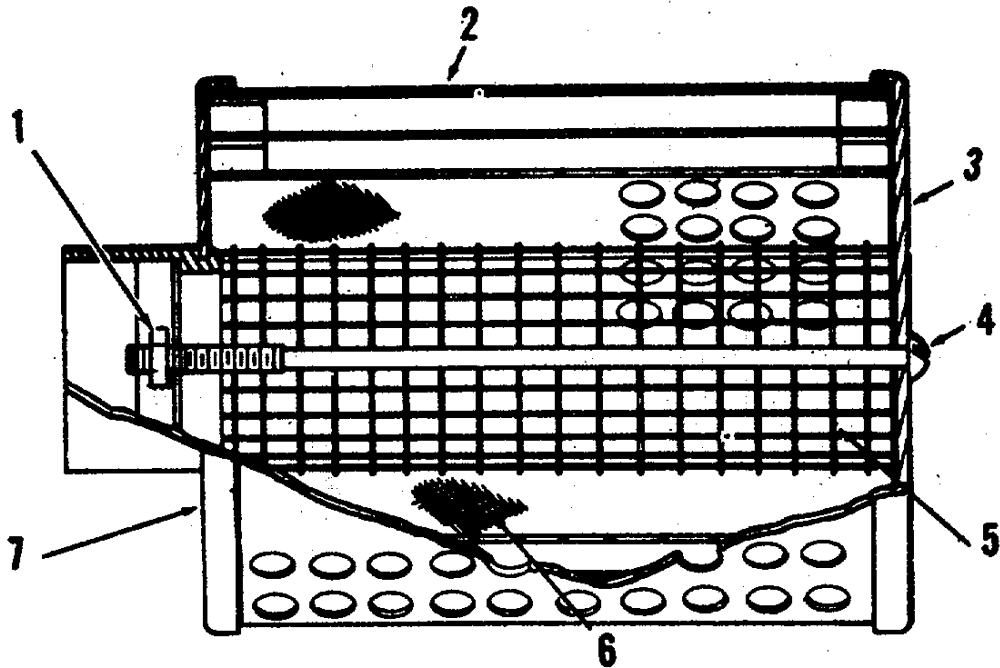


ME 4310-332-15/c-8

LEGEND TO PARTS, FIGURE C-8

ITEM NO.	FUNCT GROUP	ITEM NAME	ITEM NO.	FUNCT GROUP	ITEM NAME
1	5005	GASKET	12	5005	WASHER
2	5005	SCREW	13	5005	SPRING
3	5005	WASHER	14	5005	HOUSING
4	5005	SEAT	15	5005	GASKET
5	5005	SPRING	16	5005	GASKET
6	5005	WASHER	17	5005	SEAT
7	5005	CAGE	18	5005	WASHER
8	5005	GASKET	19	5005	SPRING
9	5005	HOUSING	20	5005	HOUSING
10	5005	SEAT	21	5005	GASKET
11	5005	SEAT			

Figure No. C-8 Compressor Valves

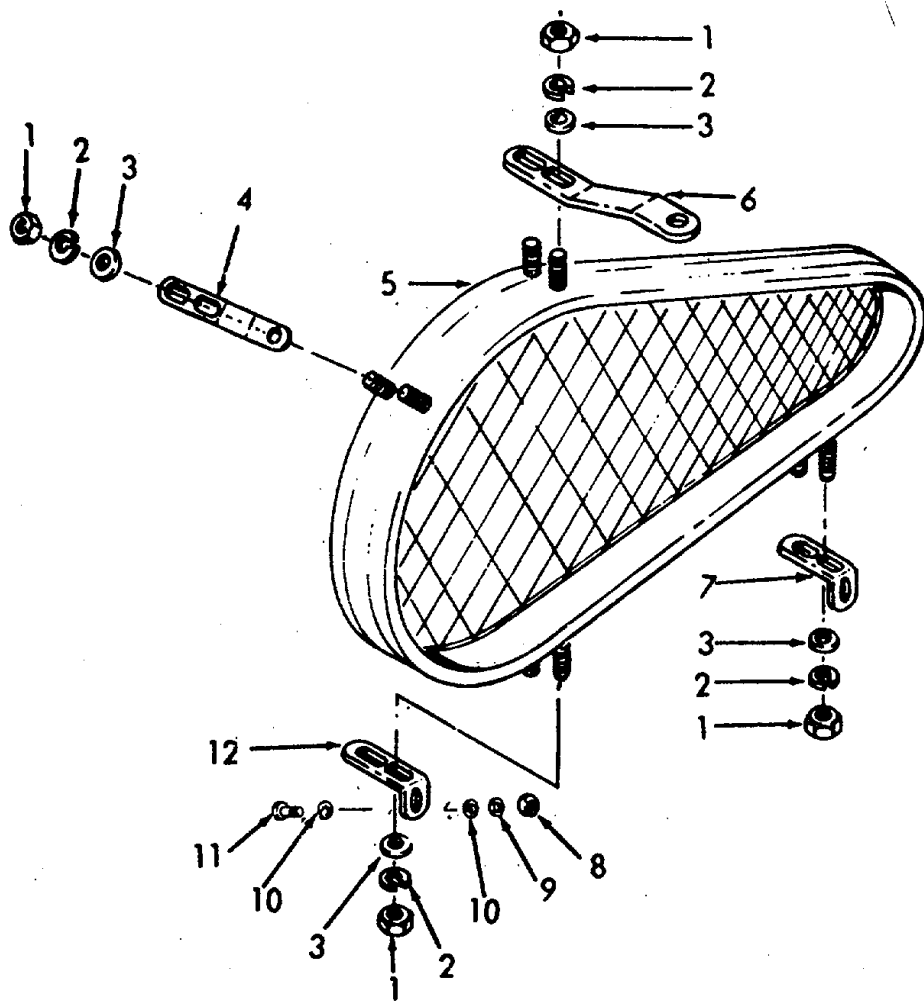


ME 4310-332-15/11

LEGEND TO PARTS, FIGURE C-9

ITEM NO.	FUNCT GROUP	ITEM NAME
1	5008	NUT
2	5008	PLATE
3	5008	COVER
4	5008	SCREW
5	5008	SCREEN
6	5008	ELEMENT
7	5008	COVER

Figure No. C-9 Air Intake Breather

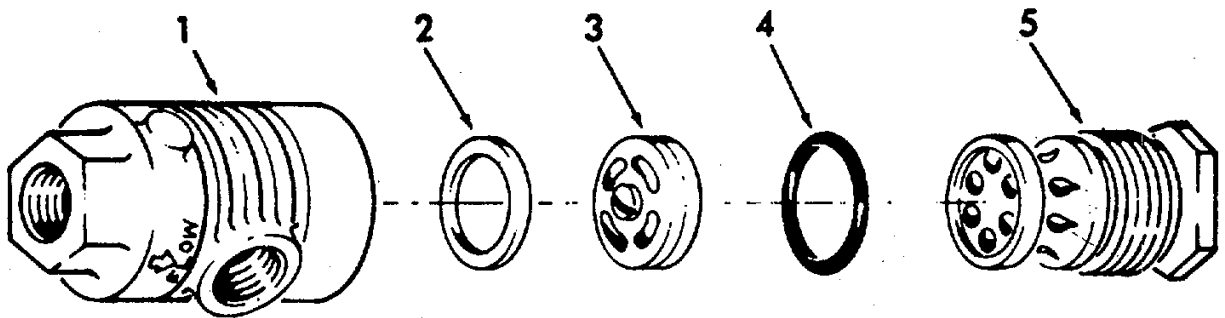


ME 4310-334-15/C-10

LEGEND TO PARTS, FIGURE C-10

ITEM NO.	FUNCT GROUP	ITEM NAME	ITEM NO.	FUNCT GROUP	ITEM NAME
1	5007	NUT	7	5007	BRACKET
2	5007	WASHER	8	5007	NUT
3	5007	WASHER	9	5007	WASHER
4	5007	BRACKET	10	5007	WASHER
5	5007	SHELL	11	5007	SCREW
6	5007	BRACKET	12	5007	BRACKET

Figure No. C-10 Belt Guard



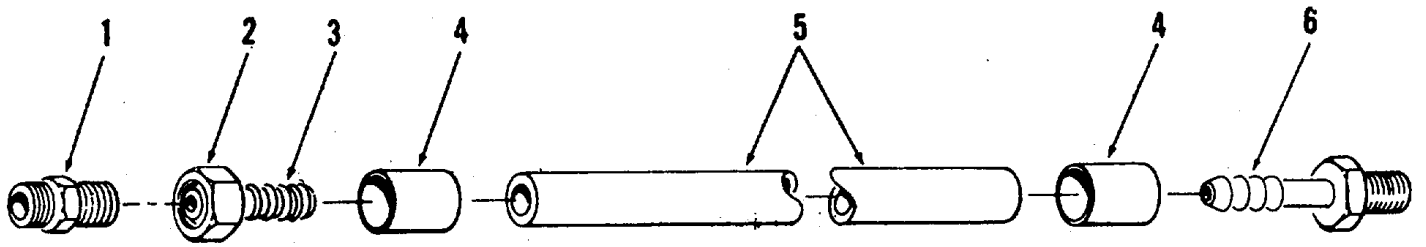
ME 4310-332-15A-12

LEGEND TO PARTS, FIGURE C-11

ITEM NO.	FUNCT GROUP	ITEM NAME
1	5009	BODY
2	5009	PACKING
3	5009	VALVE AY
4	5009	GASKET
5	5009	PLUG

Figure No. C-11 Check Valve





ME 4310-281-15A-1

LEGEND TO PARTS, FIGURE C-12

ITEM NO.	FUNCT GROUP	ITEM NAME
1	5015	COUPLING
2	5015	NUT
3	5015	STEM
4	5015	FERRULE
5	5015	HOSE
6	5015	STEM

Figure No. C-12 Air Hose

**SECTION V. INDEX-FEDERAL STOCK NUMBER AND REFERENCE NUMBER  
CROSS-REFERENCE TO INDEX NUMBER**

<u>REFERENCE NO.</u>	<u>MFG CODE</u>	<u>INDEX NO.</u>	<u>REFERENCE NO.</u>	<u>MFG CODE</u>	<u>INDEX NO.</u>
AN340-516	96906	00182	M806	11568	00248
AN340C10	11568	00204	M817	11568	00100
AN515C10-88	96906	00207			00101
A32BCX26	38260	00382	M825	11568	00264
81316	60380	00120	M8776-8	11568	00186
85093	70925	00083	M905A	11568	00061
881-3	80844	00176			00191
DD	53477	00286	M907A	11568	00036
D10037-1	23826	00055			00187
D10456-1	23826	00058	M909A	11568	00010
D1366-1	23826	00052			00087
D16577-1	23826	00041	M917A	11568	00013
D1673-1	23826	00046			00090
D274214-1	23826	00048	M919A	11568	00062
D276-1	23826	00050			00192
D317-2	23826	00059	M9300-17	36232	00015
D323-1	23826	00053	M932B	11568	00217
D357-1	23826	00057	M944A	11568	00208
D467-1	23826	00056	M9671-1	36232	00021
D50912-13	23826	00040	M97A	11A68	00213
D50937-10	23826	00039	M98A	11568	00214
D7878-1	23826	00049	NRS48	11568	00170
D9078-1	23826	00051	NR14-6A	11568	00098
D9096-1	23826	00054	NR15A	11568	00097
D9935-1	23826	00045	NR2B	11568	00196
D9943-10	23826	00047	NR29A	11568	00099
G1506	94894	00072	NR31A	11568	00096
H110P	11568	00242	NR36-104	11568	00236
H122	11568	00231	NR36-11	11568	00102
H35	23826	00035	NR36-113	11568	00225
H42	23826	00034	NR36-44	11568	00262
LL2-39	72219	00288	NR36-7	11568	00115
LL2-40	72219	00285	NR36-9A	11568	00095
LL2-45	53477	00290	OR218	11568	00247
LL2-53	53477	00287	P14000-OSA	11568	00281
LL2-59	53477	00289	RE10-20	11568	00121
L3859-2	36232	00024	RE10-2E	11568	00197
L4000-5	36232	00027	RE10-51A	11568	00143
L4000-6	36232	00028	RE10-59	11568	00146
L4370-2	36232	00064	RE10-61	11568	00147
L4370-4	36232	00065	RE10-62	11568	00138
MS15795-12	96906	00184	RE-10-65A	11568	00145
MS35335-7	96906	00139	RE10-66	11568	00246
		00148	RE10-99	11568	00093
		00157			00255
		00165	RE14-58	11568	00163
		00185	RE14-70	11568	00164
MS35338-7	96906	00171	RE14-71	11568	00162
M10-37B	11568	00234	RE14-72	11568	00160
M1024B	11568	00291	RE14-81	11568	00135
M1034B	11568	00212			00144
M1046	11568	00019			00153
M10826-3	36232	00258			00161
M27	11568	00261	RE20-105	11568	00114
		00201	RE20-106	11568	00238
M30	11568	00202	RE20-8	11568	00116
M31A	11568	00209	RE36-12A	11568	00273
M432	11568	00257	RE36-45	11568	00267
M441	11568	00011	RE36-46	11568	00270
M456	11568	00088	RE7-52A	11568	00150
		00173	RE7-53A	11568	00134
M459	11568	00263	RE7-56A	11568	00154
		00280	RE7-57A	11568	00136
		00167	RE7-60	11568	00137
M461	11568	00117			00155
M465	11568	00252	RE7-60	11568	00155
M466	11568	00283	R10-102	11568	00126
M483	11568	00172	R10-21	11568	00123
M484	11568	00237	R10-24	11568	00122
		00169	R10-4	11568	00124
M509	11568	00259	R10-448	11568	00245
M513	11568	00205	R10822	11568	00198
M54C	11568	00094	R15-4	11568	00125
M567A	11568	00190	R30	11568	00086
M568	11568	00279	R30-2	11568	00199
M569	11568	00278	R30-3	11568	00129
M629	11568	00203	R30-5	11568	00111
M673	11568	00206	S82508	11568	00276
M674	11568	00037	SE14-84	11568	00240
M696	11568	00189	SE30-100	11568	00215
		00005	SE30-101	11568	00229
M739	11568	00016	SE30-30	11568	00220
M7766-332	36232				

**SECTION VII. INDEX-FEDERAL STOCK NUMBER AND REFERENCE NUMBER  
CROSS-REFERENCE TO INDEX NUMBER**

<u>REFERENCE NO.</u>	<u>MFG CODE</u>	<u>INDEX NO.</u>	<u>REFERENCE NO.</u>	<u>MFG CODE</u>	<u>INDEX NO.</u>
SE30-30A	11568	00221	2720	60038	00110
SE30-30B	11568	00222	2789	60038	00109
SE30-30C	11568	00223	286W124	80201	00112
SE30-89	11568	00218	3859-1	6232L	00253
SE5-19	11568	00216	4298	79150	00142
SE5-2A	11568	00195	480DB11A	23826	00043
SE5-28	11568	00194	480DB12A	23826	00042
SE5-41	11568	00265	5004	94894	00078
		00268	506-32	94894	00080
		00271	592-15	86107	00292
		00274	6-3-8X3VB	11568	00188
SE5-42	11568	00266	61F1-715	94894	00074
		00269	69HA1-2H	23826	00044
		00272	729	94894	00077
		00275			00079
SE5-82	11568	00253	BRE14-94	91156	00023
SE5-83B	11568	00241	8X5-16	11568	00006
SE5-85	11568	00230			
SE5-86B	11568	00232			
SE5-87	11568	00224			
SE5-88	11568	00012			
		00089			
		00251			
SE5-90	11568	00243			
SE5-91	11568	00233			
SE5-92A	11568	00235			
SE5-95	11568	00227			
SE5-97	11568	00228			
STD506	94894	00075			
S11044-3	36232	00031			
S9225-21	36232	00066			
S9225-27	36232	00067			
T10877-5	36232	00017			
T11135-5	36232	00068			
T11544-9	36232	00032			
T11683-1	36232	00029			
T11684	36232	00026			
T11828-3	36232	00023			
UB375B	11568	00174			
ZNR20-16	11568	00105			
ZNR36-16	11568	00108			
ZR44	11568	00244			
Z113	11568	00149			
Z114	11568	00249			
Z115	11568	00131			
Z117	11568	00140			
Z118	11568	00158			
Z121	11568	00226			
Z179C	11568	00128			
Z189B	11568	00127			
Z290	11568	00177			
Z290-1	11568	00178			
Z290-2	11568	00181			
Z290-3	11568	00180			
Z290-4	11568	00179			
Z290-6	11568	00183			
Z30-30	11568	00219			
Z441	11568	00256			
Z509	11568	00168			
Z512	11568	00092			
Z513	11568	00260			
Z514	11568	00119			
Z538A	11568	00284			
Z66A	11568	00200			
10HP256UFR	36234	00009			
112	75336	00250			
112C70	75336	00103			
1506	94894	00076			
1507	94894	00073			
1508	94894	00082			
1509	94894	00081			
174855	00000	00030			
20A25-73	73559	00060			
20-1000-2LXTS	94894	00071			
2165	79150	00132			
		00152			
2185	19150	00133			
		00151			
2237	79150	00141			
22584	60038	00106			
2325	79150	00159			
25520	60038	00107			

**Section VII. INDEX-FEDERAL STOCK NUMBER AND REFERENCE NUMBER  
CROSS-REFERENCE TO INDEX NUMBER**

<u>STOCK NUMBER</u>	<u>INDEX NUMBER</u>	<u>STOCK NUMBER</u>	<u>INDEX NUMBER</u>
2990-863-0926	00241	5305-253-5822	00006
3030-618-1359	00176	5305-263-9874	00240
3110-100-0359	00110	5305-286-1960	00207
3110-100-0544	00107	5305-531-1781	00208
3110-100-3543	00106	5305-710-4192	00238
	00109	5305-808-3109	00053
3110-100-6212	00227	5305-952-0760	00135
3110-293-8320	00120		00144
3110-931-8639	00015		00153
4310-584-9005	00218		00161
4310-584-9012	00220	5305-988-1725	00037
4310-616-4372	00137	5306-157-2018	00114
	00155	5306-431-0250	00023
4310-616-4373	00233	5306-582-6207	00094
4310-616-4374	00163	5310-010-3320	00185
4310-619-0215	00146	5310-010-3321	00013
4310-625-6747	00232		00090
4310-625-6748	00228	5310-010-3322	00252
4310-625-6749	00229	5310-011-3739	00036
4310-625-6752	00136		00187
4310-625-6753	00134	5310-012-0378	00117
4310-625-6754	00154	5310-012-0391	00068
4310-625-6759	00143	5310-012-1753	00062
4310-625-6760	00162		00192
4310-625-6762	00160	5310-013-8479	00139
4310-631-3396	00131		00148
4310-631-3397	00149		00157
4310-631-3398	00140		00165
4310-631-3399	00158	5310-017-4855	00010
4310-633-6113	00219		00030
4310-649-8398	00127		00087
4310-649-8407	00128	5310-042-6893	00204
4310-773-8005	00226	5310-176-8141	00182
4310-850-5541	00243	5310-194-7307	00184
4310-874-3179	00284	5310-595-6057	00012
4310-884-4582	00224		00089
4310-896-2104	00242		00251
4310-896-2105	00253	5310-625-6755	00138
4310-993-4188	00201	5310-625-6758	00147
4730-010-4020	00029	5310-625-6761	00164
4730-021-9668	00234	5310-809-4058	00061
4730-044-4617	00237		00191
	00263	5315-151-6172	00116
4730-051-6259	00275	5315-217-6691	00186
4730-142-1593	00258	5330-239-1792	00132
	00261		00152
4730-193-7080	00216	5330-252-6639	00141
4730-221-3902	00259	5330-298-5330	00231
4730-222-3902	00257	5330-584-8999	00159
4730-228-1619	00167	5330-584-9010	00246
4730-249-3900	00217	5330-584-9011	00142
4730-263-3122	00172	5330-587-5892	00112
4730-263-3124	00173	5330-599-5888	00133
4730-273-8561	00169		00151
4730-278-3357	00280	5340-805-0825	00055
4730-279-0986	00279	5930-241-8921	00060
4730-287-1537	00170	5930-501-0059	00044
4730-366-1994	00171	5930-530-4936	00056
4730-585-2816	00093	5930-756-9452	00057
	00255	5930-772-6081	00048
4730-618-2945	00291	5945-910-4717	00043
4730-622-9402	00283	6105-777-6761	00009
4730-850-7971	00265	6110-802-6784	00035
	00268	6110-802-6785	00034
	00271	6110-805-2717	00052
	00274	6110-820-0708	00050
4730-851-6259	00266	6110-887-5001	00058
	00269	6110-887-5005	00059
	00272	6110-891-4287	00382
4820-287-4084	00250	6680-377-4915	00083
4820-822-5417	00292	6685-264-3961	00071
4910-030-2365	00072	6685-910-8359	00076
5305-010-2705	00209		
5305-010-3341	00011		
	00088		
5305-016-9796	00067		
5305-018-0147	0023		
5305-018-0148	00100		
	00101		
5305-042-4335	00066		
5305-068-0502	00189		
5305-117-9218	00190		

By Order of the Secretary of the Army:

Official:


KENNETH G. WICKHAM,  
*Major General, United States Army,  
The Adjutant General.*

W. C. WESTMORELAND,  
*General, United States Army,  
Chief of Staff.*

Distribution:

To be distributed in accordance with DA Form 12-25, Section I (qty rqr block No. 22) organizational maintenance requirements for Air Compressors, 25 CFM.

RECOMMENDED CHANGES TO EQUIPMENT TECHNICAL PUBLICATIONS

 <p style="text-align: center;"><i>THEN...JOT DOWN THE DOPE ABOUT IT ON THIS FORM. CAREFULLY TEAR IT OUT, FOLD IT AND DROP IT IN THE MAIL.</i></p>		SOMETHING WRONG WITH PUBLICATION	
		FROM: (PRINT YOUR UNIT'S COMPLETE ADDRESS)	
		DATE SENT	
PUBLICATION NUMBER		PUBLICATION DATE	PUBLICATION TITLE
IN THIS SPACE, TELL WHAT IS WRONG AND WHAT SHOULD BE DONE ABOUT IT.			
BE EXACT PIN-POINT WHERE IT IS			
PAGE NO.	PARA- GRAPH	FIGURE NO.	TABLE NO.
PRINTED NAME, GRADE OR TITLE AND TELEPHONE NUMBER		SIGN HERE	

## The Metric System and Equivalents

### Linear Measure

1 centimeter = 10 millimeters = .39 inch  
 1 decimeter = 10 centimeters = 3.94 inches  
 1 meter = 10 decimeters = 39.37 inches  
 1 dekameter = 10 meters = 32.8 feet  
 1 hectometer = 10 dekameters = 328.08 feet  
 1 kilometer = 10 hectometers = 3,280.8 feet

### Weights

1 centigram = 10 milligrams = .15 grain  
 1 decigram = 10 centigrams = 1.54 grains  
 1 gram = 10 decigrams = .035 ounce  
 1 decagram = 10 grams = .35 ounce  
 1 hectogram = 10 decagrams = 3.52 ounces  
 1 kilogram = 10 hectograms = 2.2 pounds  
 1 quintal = 100 kilograms = 220.46 pounds  
 1 metric ton = 10 quintals = 1.1 short tons

### Liquid Measure

1 centiliter = 10 milliliters = .34 fl. ounce  
 1 deciliter = 10 centiliters = 3.38 fl. ounces  
 1 liter = 10 deciliters = 33.81 fl. ounces  
 1 dekaliter = 10 liters = 2.64 gallons  
 1 hectoliter = 10 dekaliters = 26.42 gallons  
 1 kiloliter = 10 hectoliters = 264.18 gallons

### Square Measure

1 sq. centimeter = 100 sq. millimeters = .155 sq. inch  
 1 sq. decimeter = 100 sq. centimeters = 15.5 sq. inches  
 1 sq. meter (centare) = 100 sq. decimeters = 10.76 sq. feet  
 1 sq. dekameter (are) = 100 sq. meters = 1,076.4 sq. feet  
 1 sq. hectometer (hectare) = 100 sq. dekameters = 2.47 acres  
 1 sq. kilometer = 100 sq. hectometers = .386 sq. mile

### Cubic Measure

1 cu. centimeter = 1000 cu. millimeters = .06 cu. inch  
 1 cu. decimeter = 1000 cu. centimeters = 61.02 cu. inches  
 1 cu. meter = 1000 cu. decimeters = 35.31 cu. feet

## Approximate Conversion Factors

<i>To change</i>	<i>To</i>	<i>Multiply by</i>	<i>To change</i>	<i>To</i>	<i>Multiply by</i>
inches	centimeters	2.540	ounce-inches	Newton-meters	.007062
feet	meters	.305	centimeters	inches	.394
yards	meters	.914	meters	feet	3.280
miles	kilometers	1.609	meters	yards	1.094
square inches	square centimeters	6.451	kilometers	miles	.621
square feet	square meters	.093	square centimeters	square inches	.155
square yards	square meters	.836	square meters	square feet	10.764
square miles	square kilometers	2.590	square meters	square yards	1.196
acres	square hectometers	.405	square kilometers	square miles	.386
cubic feet	cubic meters	.028	square hectometers	acres	2.471
cubic yards	cubic meters	.765	cubic meters	cubic feet	35.315
fluid ounces	milliliters	29.573	cubic meters	cubic yards	1.308
pints	liters	.473	milliliters	fluid ounces	.034
quarts	liters	.946	liters	pints	2.113
gallons	liters	3.785	liters	quarts	1.057
ounces	grams	28.349	liters	gallons	.264
pounds	kilograms	.454	grams	ounces	.035
short tons	metric tons	.907	kilograms	pounds	2.205
pound-feet	Newton-meters	1.356	metric tons	short tons	1.102
pound-inches	Newton-meters	.11296			

## Temperature (Exact)

°F	Fahrenheit temperature	5/9 (after subtracting 32)	Celsius temperature	°C
----	---------------------------	-------------------------------	------------------------	----

**PIN: 026824-000**